

Monthly Report on Short-term Transactions of Electricity in India

October 2024



Economics Division
Central Electricity Regulatory Commission
6th, 7th & 8th Floors, Tower B, World Trade Centre
Nauroji Nagar, New Delhi- 110029



Contents

S.No.	Contents	Page No
	Contents	i
	List of Tables	ii
	List of Figures	iii
	Abbreviations	iv
1	Introduction	1
2	Volume of Short-term Transactions of Electricity and DSM	1
3	Price of Short-term Transactions of Electricity and DSM Charges	4
3.1	<i>Price of electricity transacted through Traders</i>	4
3.2	<i>Price of electricity transacted through Power Exchanges</i>	4
3.3	<i>DSM Charges</i>	4
4	Trading Margin	5
5	Volume of Short-term Transactions of Electricity (Regional Entity-wise)	5
6	Congestion on Inter-State Transmission Corridor for Day-Ahead Market and Real-Time Market on Power Exchanges	6
7	Volume and Price of Renewable Energy Certificates (RECs)	7
8	Inferences	8

S.No.	List of Tables	Page No.
Table-1	Volume of Short-term Transactions of Electricity and DSM (All India)	10
Table-2	Percentage Share of Electricity Transacted by Trading Licensees	12
Table-3	Price of Electricity Transacted through Traders	13
Table-4	Price of Electricity Transacted through Traders (Time-wise)	13
Table-5	Price of Electricity Transacted in Day Ahead Market	13
Table-6	Price of Electricity Transacted in Green Day Ahead Market	13
Table-7	Price of Electricity Transacted in High Price Day Ahead Market	13
Table-8	Price of Electricity Transacted in Real Time Market	13
Table-9	Volume and Price of Electricity in Term Ahead Market of IEX	13
Table-10	Volume and Price of Electricity in Term Ahead Market of PXIL	14
Table-11	Volume and Price of Electricity in Term Ahead Market of HPX	14
Table-12	Volume and Price of Electricity in Green Term Ahead Market of IEX	14
Table-13	Volume and Price of Electricity in Green Term Ahead Market of PXIL	14
Table-14	Volume and Price of Electricity in Green Term Ahead Market of HPX	14
Table-15	Volume and Price of Electricity in High Price Term Ahead Market of IEX	14
Table-16	Volume and Price of Electricity in High Price Term Ahead Market of PXIL	14
Table-17	Volume and Price of Electricity in High Price Term Ahead Market of HPX	14
Table-18	Volume of Electricity Sold through Bilateral	16
Table-19	Volume of Electricity Purchased through Bilateral	18
Table-20	Volume of Electricity Sold in Day Ahead Market through Power Exchanges	19
Table-21	Volume of Electricity Purchased in Day Ahead Market through Power Exchanges	22
Table-22	Volume of Electricity Sold in Green Day Ahead Market through Power Exchanges	23
Table-23	Volume of Electricity Purchased in Green Day Ahead Market through Power Exchanges	25
Table-24	Volume of Electricity Sold in High Price Day Ahead Market through Power Exchanges	26
Table-25	Volume of Electricity Purchased in High Price Day Ahead Market through Power Exchanges	26
Table-26	Volume of Electricity Sold in Real Time Market through Power Exchanges	27
Table-27	Volume of Electricity Purchased in Real Time Market through Power Exchanges	31
Table-28	Total Volume of Net Transactions through Power Exchanges (Regional Entity-wise)	33
Table-29	Details of Congestion in Power Exchanges	37
Table-30	Volume of Transactions through Power Exchanges (Day-wise)	38
Table-31(a)	Price of Day Ahead Transactions of Electricity (Day-Wise)	39
Table-31(b)	Price of Green Day Ahead Transactions of Electricity (Day-Wise)	40
Table-31(c)	Price of Real Time Transactions of Electricity (Day-Wise)	41
Table-31(d)	Price of High Price Day Ahead Transactions of Electricity (Day-Wise)	42
Table-32	Volume of Transactions through Power Exchanges (Regional Entity-wise)	43
Table-33	Volume and Charges under DSM (Day wise)	47
Table-34	Volume of Electricity Under drawal/ Over Injection (Exported) under DSM	48
Table-35	Volume of Electricity Over drawal/ Under Injection (Imported) under DSM	54
Table-36	Volume and Price of Renewable Energy Certificates (RECs) transacted through Power Exchanges and through Traders (Bilateral)	60
Table-37(a)	Volume and Price of Cross Border Trade through Day Ahead Market at IEX	60
Table-37(b)	Volume and Price of Cross Border Trade through Real Time Market at IEX	60

S. No.	List of Figures	Page No.
Figure-1	Volume of various kinds of Electricity Transactions in Total Electricity Generation	10
Figure-2	Volume of Short-term Transactions of Electricity and DSM Volume	10
Figure-3	Volume transacted in different markets segments on Power Exchanges	11
Figure-4	Volume of transactions on Power Exchange and DSM Volume (Day-wise)	11
Figure-5	Percentage Share of Electricity Transacted by Trading Licensees	12
Figure-6	Weighted Average Price of Short-term Transactions of Electricity	15
Figure-7	Weighted Average Price of Short-term Transactions of Electricity (Day-wise)	15

Abbreviations

Abbreviation	Expanded Version
ABSP_ANTP	Acme Bhiwadi Solar Power Private Limited, Anantpur
ACBIL	ACB (India) Limited
ACP	Area Clearing Price
ACV	Area Clearing Volume
ACME_SLR	ACME Solar Power Project
ACME_RUMS	Acme Rewa Ultra Mega Solar Project
ADANI_4RE	Adani Renewable Energy Holding Four Limited
ADANI GREEN	Adani Green Energy Limited
ADANIHB_SLR	Adani Hybrid Energy Jaisalmer One Limited (Solar)
ADANI_SLR 4	Adani Solar Energy Four Private Limited
ADANIHB_WIND	Adani Hybrid Energy Jaisalmer One Limited (Wind)
ADEPT	Adept Renewable Technologies Private Limited
ADY1_PVGD	Adyah Solar Energy Pvt Ltd., Block 1 Pavagada Solar Park
ADY2_PVGD	Adyah Solar Energy Pvt Ltd., Block 2 Pavagada Solar Park
ADY3_PVGD	Adyah Solar Energy Pvt Ltd., Block 3 Pavagada Solar Park
ADY6_PVGD	Adyah Solar Energy Pvt Ltd., Block 6 Pavagada Solar Park
ADY10_PVGD	Adyah Solar Energy Pvt Ltd., Block 10 Pavagada Solar Park
ADY13_PVGD	Adyah Solar Energy Pvt Ltd., Block 13 Pavagada Solar Park
AGEMPL BHUJ	Adani Green Energy (MP) Ltd.,Bhuj
AHEJOL_S_FTG2	Adani Hybrid Energy Jaisalmer One Limited (SOLAR)
AHEJOL_W_FTG2	Adani Hybrid Energy Jaisalmer One Limited (WIND)
AHEJ2L_SOLAR	Adani Hybrid Energy Jaisalmer Two Limited (Solar)
AHEJ3L_SOLAR	Adani Hybrid Energy Jaisalmer Three Limited (Solar)
AHEJ4L_SOLAR	Adani Hybrid Energy Jaisalmer Four Limited-Hybrid Solar
AHEJ4L_WIND	Adani Hybrid Energy Jaisalmer Four Limited-Hybrid Wind
AHSP_ANTP	Acme Hisar Solar Power Private Limited,Anantpur
AKS_PVGD	ACME Kurukshetra Solar Energy Pvt. Ltd
AKSP_ANTP	Acme Karnal Solar Power Private Limited,Anantpur
ALFANAR_BHUJ	Alfanar Group Wind Project, Bhuj, Gujarat
ALTRA XERGI	Altra Xergi Power Private Limited
AMP_GREEN6	Amp Energy Green Six Private Limited
AMPLUS_AGES	Amplus Ages Private Limited
AMPS Hazira	Arcelor Mittal Nippon Steel, Hazira
APTEL	Appellate Tribunal for Electricity
ARERJL_SLR	Adani Renewable Energy Park Rajasthan Ltd.
ARINSUM_RUMS	Solenergi RewaUltraMega Solar Project
ARS_PVGD	ACME REWARI Solar Power Pvt Ltd.
ARTPP	Adani Power Limited - Raipur TPP
ASEJTL_SLR	Adani Solar Energy Jodhpur Two Ltd.
AVAADA1_PVGD	Avaada Solar Energy Private Ltd., Pavagada Project 1
AVAADA2_PVGD	Avaada Solar Energy Private Ltd., Pavagada Project 2
AVADARJHN_SLR	Avaada Rjhn Private Limited_Solar
AYANA_NPKUNTA	Ayana Power, NP Kunta
AZURE_ANTP	Azure Power,Anantpur
AZURE_PVGD	Azure Power,Pavagada
AZURE_SLR	Azure Power Solar Power Project
AZURE34_SLR	Azure Power 34 Pvt. Ltd. Solar Power Project
AZURE43_SLR	Azure Power Forty Three Private Limited
BALCO	Bharat Aluminum Company Limited
BARC	Bhabha Atomic Research Centre
BASOCHHU HEP	Basochhu Hydropower Plant Bhutan
BBMB	Bhakra Beas Management Board

BETAM_TCN	Betam Wind Energy Private Limited, Tuticorin
BHADRAVATHI HVDC	Bhadravathi High Voltage Direct Current Link
BRBCL	Bhartiya Rail Bijlee Company Limited
CEA	Central Electricity Authority
CERC	Central Electricity Regulatory Commission
CGPL	Coastal Gujarat Power Limited
CHUKHA HEP	Chhukha Hydroelectric Project, Bhutan
CHUZACHEN HEP	Chuzachen Hydro Electric Power Project
CLEAN_SLR	Clean Solar Power Pvt. Ltd
CLEANSPL_SLR	Clean Solar Jodhpur Pvt Ltd
COASTGEN	Coastal Energen Private Limited
DAGACHU	Dagachhu Hydro Power Corporation
DAM	Day Ahead Market
DEVKOOT_SLR	Devkoot Solar Power Plant, NTPC Green Energy Ltd.
DCPP	Donga Mahua Captive Power Plant
DD&DNH	Daman and Diu & Dadar Nagar Haveli
DGEN MEGA POWER	DGEN Mega Power Project
DGPCL Bhutan	Druk Green Power Corporation Ltd., Bhutan
DHARIWAL POWER	Dhariwal Power Station
DIKCHU HEP	Dikchu Hydro-electric Project, Sikkim
DOYANG HEP	DoyangHydro Electric Project
DSM	Deviation Settlement Mechanism
DVC	Damodar Valley Corporation
EDEN_SLR	Eden RE Cite Private limited
EMCO	EMCO Energy Limited
ESPL_RADHANESDA	Electro Solaire Private Limited, Radhanesda
ESSAR POWER	Essar Power Limited
FORTUM1_PVGD	Fortum Finnsurya Energy Private Ltd, Pavagada Project 1
FORTUM2_PVGD	Fortum Finnsurya Energy Private Ltd, Pavagada Project 2
FRV_ANTP	Fotowatio Renewable Ventures, Anantapur
FRV_NPK	Fotowatio Renewable Ventures, NP Kunta
GIPCL_RADHANESDA	Gujarat Industries Power Company Ltd, Radhanesda
GIWEL_BHUJ	Green infra wind energy Limited, Bhuj
GIWEL_TCN	Green Infra Wind Energy Limited, Tuticorin
GMR CHHATTISGARH	GMR Chhattisgarh Energy Limited
GMR KAMALANGA	GMR Kamalanga Energy Ltd.
G-DAM	Green Day Ahead Market
GRIAN	Grian Energy Private Limited
GSECL P-II	GSECL Raghnesda Solar Park (Phase-II)
G-TAM	Green Term Ahead Market
HPX	Hindustan Power Exchange Limited
HP-DAM	High Price Day Ahead Market
HP-TAM	High Price Term Ahead Market
HVDC ALPD	Alipurduar High Voltage Direct Current Link
HVDC CHAMPA	Champa-Kurukshetra High Voltage Direct Current Link
HVDC PUS	Pasauli High Voltage Direct Current Link
HVDC RAIGARH	Raigarh-Pugalur High Voltage Direct Current Link
IBEUL	Ind Bharat Energy Utkal Limited
IEX	Indian Energy Exchange Limited
IGSTPS	Indira Gandhi Super Thermal Power Station Jhajjar
IL&FS	Infrastructure Leasing & Financial Services Limited
INOX_BHUJ	INOX Wind Limited, Bhuj, Gujarat
J&K	Jammu & Kashmir
JAYPEE NIGRIE	Jaypee Nigrie Super Thermal Power Project

JHABUA POWER MP	Jhabua Thermal Power Project
JINDAL POWER	Jindal Power Limited
JINDAL STAGE-II	Jindal Power Ltd Stage II
JITPL	Jindal India Thermal Power Ltd.
JORETHANG	Jorethang Loop Hydroelectric Power Project
JSW_RENEW_2	JSW Renew Energy Two Limited
KAPP 3&4	Kakrapar Atomic Power Station Unit 3 & 4
KARCHAM WANGTOO	Karcham Wangtoo H.E. Project
KBUNL	Kanti Bijlee Utpadan Nigam Limited
KHURJA STPP	Khurja Super Thermal Power Plant
KORBA WEST POWER	Korba West Power Company Limited
KOTESHWAR	Koteshwar Hydro Power project
KREDL_PVGD	Karnataka Renewable Energy Development Ltd,Pavagada
KSK MAHANADI	KSK Mahanadi Power Ltd
KSMPL_SLR	Kilaj Solar (Maharashtra) Private Limited
KURICHU HEP	Kurichhu Hydro-electric Power Station, Bhutan
LANKO_AMK	LancoAmarkantak Power Private Limited
LANKO BUDHIL	LancoBudhil Hydro Power Private Limited
LANKOKONDAPALLY	Lanco Kondapally Power Private Limited
LOKTAK	Loktak Power Project
MAHINDRA_RUMS	Mahindra Rewa Ultra Mega Solar Project
MAHOBA_SLR	Mahoba Solar Power Project
MALANA	Malana Hydroelectric Plant
MANGDECHU HEP	Mangdechhu Hydroelectric Project, Mangdechhu River, Bhutan
Maruti Coal	Maruti Clean Coal and Power Limited
MB POWER	MB Power Ltd
MEENAKSHI	Meenakshi Energy Private Limited
MRPL	Mahindra Renewables Private Limited
MSEPL	Masaya Solar Energy Private Limited
MSRPL	Mega Solis Renewables Pvt. Ltd.
MTPS	TATA Power Mundra Thermal Power Station
MTPS II	Muzaffarpur Thermal Power Station – Stage II
MYTRAH_TCN	Mytrah Energy (India) Private Limited,Tuticorin
MU	Million Units
NAPP	Narora Atomic Power Plant
NCR ALLAHABAD	North Central Railway, Allahabad
NEEPCO	North Eastern Electric Power Corporation Limited
NEP	Nepal
NFL	National Fertilisers Limited
NHPC STATIONS	National Hydro Electric Power Corporation Ltd. Stations
NJPC	Nathpa Jhakri Hydroelectric Power Station
NLC	Neyveli Lignite Corporation Limited
NLDC	National Load Dispatch Centre
NOKHRA_STPP	Nokhra Solar Power Plant, NTPC Green Energy Ltd.
NPGC	Nabinagar Power Generating Company (Pvt.) Limited
NREL_DAYAPAR (W)	NREL-Dayapar Wind
NSPCL	NTPC - SAIL Power Company Private Limited
NTECLVallur	NTPC Tamil Nadu Energy Company Limited Vallur
NTPC_ANTP	NTPC Anantapur
NTPC STATIONS	National Thermal Power Corporation Ltd. Stations
NTPL	NLC Tamil Nadu Power Limited
NVVN	NTPC Vidyut Vyapar Nigam Limited
OCF	Order Carry Forward
ONEVOLT	Onevolt Energy Private Limited

ONGC Platana	ONGC Tripura Power Company
OPGC	Odisha Power Generation Corporation
ORANGE_TCN	Orange Renewable Power Pvt. Ltd,Tuticorin
OSTRO	Ostro Energy Private Limited
OTC	Over The Counter
PARAM_PVGD	Parampujya Solar Energy Private Ltd
PARE HEP	Pare hydroelectric project, Arunachal Pradesh
PXIL	Power Exchange India Limited
RAMPUR HEP	Rampur Hydro Electric Power Project
RANGIT HEP	Rangit Hydroelectric power project
RANGANADI HEP	Ranganadi Hydro Electric Power Project, Arunachal Pradesh
RAP-B	Rajasthan Atomic Power Plant-B
RAP-C	Rajasthan Atomic Power Plant-C
RAPP 7&8	Rajasthan Atomic Project 7&8
REC	Renewable Energy Certificate
REGL	Raigarh Energy Generation Limited
RENEW_BHACHAU	ReNew Power Limited, Bhachau
RENEW_BHUI	ReNew Power Limited, Bhuj
RENEW_PVGD	ReNew Wind Energy (TN2) Private Limited
RENEW_ROSHNI FATEHGARH	Renew Surya Roshni Private Limited-Fatehgarh-III PS
RENEW_SAAVAN	Renew Surya Aayan Private Limited
RENEW_SLR_BKN	Renew Solar Bikaner
RENEW_SOJAS	Renew Surya Ojas Private Limited-Wind
RENEW_SPRATAP	Renew Surya Pratap Private Limited
RENEW_SR_SLR	Renew Surya Ravi Private Limited (Solar)
RENEW_SVIHAAN	Renew Surya Vihaan Private Limited
RENEW_ROSHNI	Renew Surya Roshni Private Limited Koppal PS
RENEWJH_SLR	Renew Solar Energy (Jharkhand Three) Private Limited
RENEWURJA_SLR	ReNew Solar Urja Private Limited
RGPPL_IR	Ratnagiri Gas and Power Private Ltd., supply to Indian Railways
RGPPL_OTHER	Ratnagiri Gas and Power Private Limited
RISING_SLR	Rising Sun Energy Pvt. Ltd.
RLDC	Regional Load Dispatch Centre
RONGNICHU HEP	Rongnichu Hydro Electric Power Project
RPREL	Raipur Energen Limited
RSTPS_FSPP	NTPC Ramagundam STPS- Floating Solar PV Project
RTC	Round The Clock
RTM	Real Time Market
SasanUMPP	Sasan Ultra Mega Power Project
SB_SLR	Soft Bank Solar
SB6_POKARAN	SB Energy Six Private Limited, Pokaran
SBG CLEANTECH_SLR	SBG Cleantech Ltd
SBG_NPK	SB Energy Solar Private Limited,NP Kunta
SBG_PVGD	SB Energy Solar Private Limited,Pavagada
SBSR_SLR	SBSR Power Cleantech Eleven Private Limited
SEMBCORP	Sembcorp Gayatri Power Ltd
SIMHAPURI	Simhapuri Energy Private Limited
SKS Power	SKS Power Generation Chhattisgarh Limited
SESPL	Srijan Energy Systems Pvt. Ltd.
SINGOLI BHATWARI HEP	Singoli-Bhatwari Hydroelectric Project, Uttarakhand
SKRPL	Sitac Kabini Renewables Pvt. Ltd.
SPRNG_NPKUNTA	Sprng Energy, NP Kunta
SPRING_PUGALUR	Spring Solar Power Private Limited, Pugalur
SUL	Sikkim Urja Limited

TALA HEP	Tala Hydroelectric Project, Bhutan
TASHIDENG HEP	Tashiding Hydro Electric Project, Sikkim
TATA_ANTP	TATA Power Anantapur
TATA_PVGD	Tata Power Renewable Energy Ltd
TATA_SLR	Tata Solar
TAM	Term Ahead Market
TEESTA STG3	Teesta Stage 3 Hydro Power Project
TEHRI	Tehri Hydro Electric Power Project
TESPL	Transition Energy Services Private Limited
THAR1_SLR	Thar Surya Ravi One Pvt Ltd
THERMAL POWERTECH	Thermal Powertech Corporation India Limited
TPREL_RADHANESDA	Tata Power Renewable Energy Limited, Radhanesda
TPS	Thermal Power Station
TPSL	TP Saurya Limited
VINDHYACHAL HVDC	Vindhyachal High Voltage Direct Current Link
WA	Weighted Average
YARROW_PVGD	Yarrow Infra Structure Private Ltd

1. Introduction

1.1. A well-functioning electricity market requires an effective market monitoring process. The monthly report on short-term transactions of electricity, published by CERC since 2008 as part of its market monitoring process, provides a snapshot of key aspects of short-term transactions of electricity in India. Here, “short-term transactions of electricity” refers to the contracts of less than one year period for electricity transacted (inter-State) - through Trading Licensees, directly between entities and on Power Exchanges (Indian Energy Exchange Ltd. (IEX), Power Exchange India Ltd. (PXIL) and Hindustan Power Exchange Ltd. (HPX)). “DSM Volume” includes the volume recorded under Deviation Settlement Mechanism. The main objectives of the report are: (i) to analyse the volume and price of the short-term transactions of electricity; (ii) to assess the competition among the market players; (iii) to analyse the effect of congestion on the volume of electricity transacted through power exchanges; (iv) to provide information on volume and price of Renewable Energy Certificates (RECs) transacted through power exchanges; and (v) to disseminate all other relevant market information. The analysis of short-term transactions of electricity and DSM volume during the month of **October 2024** is presented in the following sections.

2. Volume of Short-term Transactions of Electricity and DSM

2.1. During October 2024, total electricity generation, excluding generation from renewable and captive power plants in India, was 134224.47 MU (Table-1). Of the total electricity generation, 12.11% was transacted through short-term and DSM, comprising 6.24% through power exchanges {Day Ahead Market (DAM) (including G-DAM & HP-DAM) and Real Time Market (RTM)}, followed by 3.95% through bilateral (through Traders and Term-Ahead contracts on power exchanges), and directly between entities, and 1.93% through DSM (Table-1 & Figure-1).

2.2. Of the total short-term transactions and DSM volume (16260.07 MU¹), 51.49% was transacted through power exchanges {DAM (including G-DAM & HP-DAM) and RTM}, followed by 32.58% through bilateral² (i.e., through Traders, Term-Ahead contracts on power exchanges and directly between entities), and 15.93% through DSM (Table-1 & Figure-2). The

¹ Volume here has been finalised in consultation with Grid India, after resolving issues that emerged post implementation of GNA Regulations and transition to new WBES software by Grid India.

² includes bilateral short-term transactions under GNA and T-GNA

daily volume of short-term transactions is shown in Table-30. Figure-4 shows the daily volume trend for short-term transactions and DSM volume.

2.3. Of the total volume of electricity transacted through power exchanges, 45.95% of the volume was transacted in DAM (including G-DAM & HP-DAM), followed by 27.44% in RTM and 26.61% in Term Ahead Market (TAM) (including G-TAM & HP-TAM) (Figure-3).

2.4. The share of electricity traded by each trading licensee is given in Table-2 & Figure-5 shows the share of the top 5 trading licensees. The volume of electricity transacted by the trading licensees includes bilateral transactions and transactions undertaken through power exchanges. There were 62 trading licensees as of October 2024. Of these, 37 trading licensees were engaged in short-term trading. The top 5 trading licensees, namely PTC India Ltd., NTPC Vidyut Vyapar Nigam Ltd., Adani Energy Solutions Step-Thirteen Ltd., Tata Power Trading Company (P) Ltd., and Manikaran Power Ltd., had a share of 82.30% in the total volume of electricity traded by all the licensees.

2.5. Herfindahl-Hirschman Index (HHI), a commonly accepted index to calculate market concentration, has been used to measure competition among trading licensees. An increase in the HHI generally indicates a decrease in competition and an increase in market concentration, and vice versa. The HHI below 0.15 indicates non-concentration, the HHI between 0.15 and 0.25 indicates moderate concentration, and the HHI above 0.25 indicates high concentration. The HHI has been computed based on the volume of electricity traded (inter-State & intra-State) by inter-State trading licensees, and it was 0.1825 for the month of October 2024, which indicates the moderate concentration of market power (Table-2).

2.6. The volume of electricity transacted in the DAM of IEX was 4419.86 MU, while no electricity was transacted in the DAM of PXIL and HPX. The volume of total buy bids and sell bids was 6604.83 MU and 12474.02 MU, respectively in IEX. While no buy bids were received in PXIL and HPX, the volume of total sell bids was 108.56 MU and 51.58 MU, respectively.

2.7. Of the total volume of electricity transacted in the DAM of IEX, the volume sold by the neighbouring countries of India was 50.38 MU, while no volume was purchased by the neighbouring countries, under the Cross Border Trade of electricity through power exchanges (Table-37(a)). No Cross Border transaction of electricity was undertaken through PXIL and HPX.

2.8. The volume of electricity transacted in the G-DAM of IEX was 822.53 MU, while no electricity was transacted in the G-DAM of PXIL and HPX. The volume of total buy bids and sell bids was 2074.62 MU and 1080.33 MU, respectively, in IEX. No bids were received in PXIL and HPX.

2.9. No electricity was transacted in the HP-DAM of IEX, PXIL and HPX. The volume of total buy bids and sell bids was 0.08 MU and 2328.43 MU, respectively, in IEX. No bids were received in PXIL and HPX.

2.10. The volume of electricity transacted in the RTM of IEX, PXIL and HPX was 3122.66 MU, 6.75 MU and 1.08 MU, respectively. The volume of total buy bids and sell bids was 4341.82 MU and 7637.87 MU, respectively in IEX; 15.22 MU and 144.69 MU in PXIL; & 2.03 MU and 7.45 MU, respectively in HPX. The variation in the volume of buy bids and sell bids placed through power exchanges shows variation in the demand and supply position.

2.11. Of the total volume of electricity transacted in the RTM of IEX, the volume sold by the neighbouring countries of India was 117.78 MU, while no volume was purchased, under the Cross Border Trade of electricity through power exchanges (Table-37(b)). No Cross Border transaction of electricity was undertaken through PXIL and HPX.

2.12. The volume of electricity transacted in the TAM of IEX, PXIL and HPX was 1259.88 MU, 1095.18 MU, and 543.93 MU, respectively (Table-9, Table-10 & Table-11). The volume of electricity transacted in the Green Term Ahead Market (G-TAM) of IEX, PXIL and HPX was 43.29 MU, 23.87 MU, and 62.84 MU, respectively (Table-12, Table-13 & Table-14).

2.13. The volume of electricity transacted in the HP-TAM of PXIL was 6.75 MU. No electricity was transacted in HP-TAM of IEX and HPX (Table-15, Table-16 & Table-17).

3. Price of Short-term Transactions of Electricity and DSM charges

3.1. **Price of electricity transacted through Traders:** The minimum, maximum and weighted average sale prices for the electricity transacted through traders were ₹2.44/kWh, ₹10.00/kWh and ₹6.22/kWh, respectively (Table-3). The weighted average sale prices were also computed for the electricity transacted during Round the Clock (RTC) and Off-peak periods separately, and the sale prices were ₹6.27/kWh and ₹6.13/kWh, respectively. No electricity was transacted through traders during only Peak periods (Table-4).

3.2. **Price of electricity transacted through Power Exchanges:** The minimum, maximum and weighted average prices for the electricity transacted in the DAM of IEX were ₹0.50/kWh, ₹10.00/kWh and ₹4.03/kWh, respectively (Table-5). The minimum, maximum and weighted average prices for the electricity transacted in the G-DAM of IEX were ₹0.50/kWh, ₹10.00/kWh and ₹3.60/kWh, respectively (Table-6). The minimum, maximum and weighted average prices for the electricity transacted in the RTM of IEX were ₹0.42/kWh, ₹10.00/kWh and ₹3.65/kWh, respectively. These prices in the RTM of PXIL were ₹3.08/kWh, ₹10.00/kWh and ₹9.89/kWh respectively. These prices in the RTM of HPX were ₹7.00/kWh, ₹10.00/kWh and ₹8.61/kWh respectively. (Table-8). The weighted average price of electricity transacted in the TAM of IEX, PXIL and HPX was ₹6.45/kWh, ₹6.82/kWh and ₹7.20/kWh, respectively (Table-9, Table-10 and Table-11). The weighted average price of electricity transacted in the G-TAM of IEX, PXIL and HPX was ₹7.29/kWh, ₹6.50/kWh and ₹3.74/kWh, respectively (Table-12, Table-13 and Table-14). The weighted average price of electricity transacted in the HP-TAM of PXIL was ₹15.39/kWh (Table-16). No electricity was transacted in HP-DAM & HP-TAM of IEX; in DAM, G-DAM & HP-DAM of PXIL; and in DAM, G-DAM, HP-DAM & HP-TAM of HPX.

3.3. **DSM Charges:** The minimum, maximum and average charges under DSM was ₹1.68/kWh, ₹13.26/kWh and ₹4.68/kWh, respectively (Table-33).

3.4. The comparison of weighted average prices of electricity transacted through trading licensees and power exchanges (collective transactions) is shown in Figure-6. The daily prices of electricity transacted through various segments at power exchanges and their comparison are shown in Table-31(a), (b), (c) & (d) and Figure-7. The daily volume and charges under DSM are shown in Table-33.

4. Trading Margin

4.1. As per the CERC (Procedure, Terms, and Conditions for grant of trading licence and other related matters) Regulations 2020, the trading licensees are allowed to charge a trading margin of not less than 0 paise/kWh and up to 7 paise/kWh. The weighted average trading margin charged by the trading licensees for bilateral transactions during the month was ₹0.016/kWh.

5. Volume of Short-term Transactions of Electricity (Regional Entity³-Wise)

5.1. Of the total bilateral transactions, the top 5 regional entities/states sold 27.63% of the volume. These were Jindal Power Limited Stage-II, IL&FS Tamil Nadu Power Company Ltd., Adani Power Limited - Raipur TPP, Gujarat and Jaypee Nigrie Super Thermal Power Plant. The HHI for sellers was 0.0322, which indicates non-concentration of the market (Table-18). The top 5 regional entities/states purchased 61.20% of the volume, and these were Rajasthan, Gujarat, Maharashtra, Tamil Nadu and Andhra Pradesh. The HHI for buyers was 0.0962, which indicates the non-concentration of market (Table-19).

5.2. Of the total DAM transactions at power exchanges, the top 5 regional entities/states sold 29.55% of the volume, and these were Odisha, Jindal Power Limited Stage-II, Adani Power Limited - Raipur TPP, Mahan Energen Ltd. (Unit 1) and Uttar Pradesh. The HHI for sellers in DAM was 0.0319, which indicates the non-concentration of market (Table-20). The top 5 regional entities/states purchased 52.90% of the volume, and these were Gujarat, Maharashtra, Uttar Pradesh, Telangana and Delhi. The HHI for buyers in DAM was 0.0806, which indicates the non-concentration of market (Table-21).

5.3. Of the total G-DAM transactions at power exchanges, the top 5 regional entities/states sold 47.17% of the volume, and these were Karnataka, Adani Renewable Energy Holding Four Ltd., Adani Green Energy Twenty Five B Ltd. (Infirmer), Meghalaya and Himachal Pradesh. The HHI for sellers in G-DAM was 0.0622, which indicates non-concentration of the market (Table-22). The top 5 regional entities/states purchased 64.76% of the volume, and these were Maharashtra, Arcelor Mittal Nippon Steel Hazira, Damodar Valley Corporation, Odisha and Tamil Nadu. The HHI for buyers in G-DAM was 0.1052, which indicates non-concentration of the market (Table-23).

³ In case of a State, the entities which are “selling” also include generators connected to State Grid and the entities which are “buying” also include open access consumers.

5.4. No volume was traded in HP-DAM of all three power exchanges.

5.5. Of the total RTM transactions at power exchanges, the top 5 regional entities/states sold 37.53% of the volume, and these were Madhya Pradesh, Bihar, Tamil Nadu, Odisha and Uttar Pradesh. The HHI for sellers in RTM was 0.0416, which indicates the non-concentration of market (Table-26). The top 5 regional entities/states purchased 56.63% of the volume, and these were Punjab, Telangana, Maharashtra, Rajasthan and Uttar Pradesh. The HHI for buyers in RTM was 0.0855, which indicates non-concentration of the market (Table-27).

5.6. The total volume of net short-term transactions of electricity (Regional entity-wise), i.e., the volume of net transactions through bilateral and power exchanges is shown in Table-28 & 32. The top 5 electricity selling regional entities/states of short-term transactions were Jindal Power Limited Stage-II, Adani Power Limited - Raipur TPP, Madhya Pradesh, Karnataka and Jindal India Thermal Power Limited. The top 5 electricity purchasing regional entities/states of short-term transactions were Maharashtra, Gujarat, Rajasthan, Punjab and Delhi.

5.7. Of the total under-drawal/ over-injection volume under DSM in October 2024, the top 5 regional entities/states accounted for 21.23% of the volume, and these were Madhya Pradesh, Gujarat, Punjab, Haryana and Rajasthan (Table-34). The top 5 regional entities/states under DSM accounted for 17.36% of the total over-drawal/ under-injection volume, and these were Maharashtra, Uttar Pradesh, Tamil Nadu, Rajasthan and West Bengal (Table-35).

6. Congestion⁴ on Inter-State Transmission Corridor for Day-Ahead Market and Real Time Market on Power Exchanges

6.1. Power exchanges use a price discovery mechanism in which the aggregate demand and supply are matched to arrive at an unconstrained market price and volume. This process assumes that there is no congestion in the inter-State transmission system between different regions. However, in reality, the system operator (NLDC), in coordination with RLDCs, limits

⁴ “Congestion” means a situation where the demand for transmission capacity exceeds the available transfer capability

the flow (due to congestion) in the inter-State transmission system. In such a situation, power exchanges adopt a mechanism called “Market Splitting”⁵.

6.2. The volume of electricity that could not be cleared due to congestion & other reasons and could not be transacted through power exchanges is the difference between unconstrained cleared volume and actual cleared volume. During the month of October 2024, no congestion was experienced in any of the power exchanges (Table-29).

7. Volume and Price of Renewable Energy Certificates (RECs)

7.1. The concept of Renewable Energy Certificates (RECs) seeks to address the mismatch between the availability of renewable energy and the requirement of the obligated entities to meet their renewable purchase obligation by purchasing green attributes of renewable energy remotely located in the form of RECs. The REC mechanism is a market-based instrument to promote renewable sources of energy and the development of the electricity market.

7.2. One REC is equivalent to 1 MWh of electricity injected into the grid from renewable energy sources. The REC is exchanged only in the power exchanges approved by CERC within the band of a floor price and forbearance (ceiling) price as notified by CERC from time to time. The first REC trading was held on power exchanges in May 2011.

7.3. The categorisation of RECs has been dispensed with on introduction of the concept of multiplier under the CERC (Terms and Conditions for Renewable Energy Certificates for Renewable Energy Generation) Regulations, 2022, brought into effect from 05.12.2022. Accordingly, the power exchanges deactivated the Solar and Non-Solar REC contract for trading w.e.f. December 2022. A new contract named “REC” has been made available for trading on the power exchanges. Further, RECs can also be exchanged through trading licensees as per the REC Regulations 2022.

⁵“Market Splitting” is a mechanism adopted by Power Exchanges, where the market is split in the event of transmission congestion, into predetermined (by NLDC) bid areas or zones, which are cleared individually at their respective area prices such that the energy balance in every bid area is reached based upon the demand and supply in individual bid areas and using the available transmission corridor capacity between various bid areas simultaneously. As a result of this market splitting the price of electricity in the importing region, where demand for electricity is more than supply, becomes relatively higher than the price of electricity in the exporting region.

7.4. The details of REC transactions for the month of October 2024 are shown in Table-36. The market clearing volume of RECs transacted on IEX, PXIL, and HPX was 444161, 360199 and 10644, respectively. The weighted average market clearing price of these RECs was ₹114/MWh in IEX, ₹116/MWh in PXIL, and ₹120/MWh in HPX.

7.5. The gap between the volume of buy and sell bids of RECs placed through power exchanges shows the variation in demand for the RECs. The ratio of buy bids to sell bids was 0.58, 0.47, and 0.04 in IEX, PXIL, and HPX, respectively.

7.6. The volume of RECs transacted through Trading Licensees in October 2024 was 21976. The weighted average trade price for the RECs transacted through traders was ₹133/MWh.

8. Inferences:

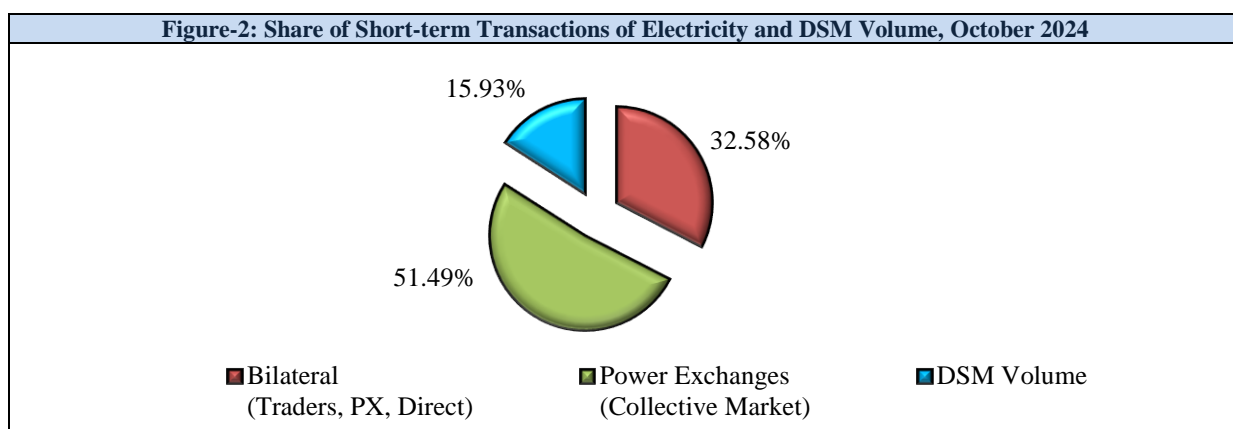
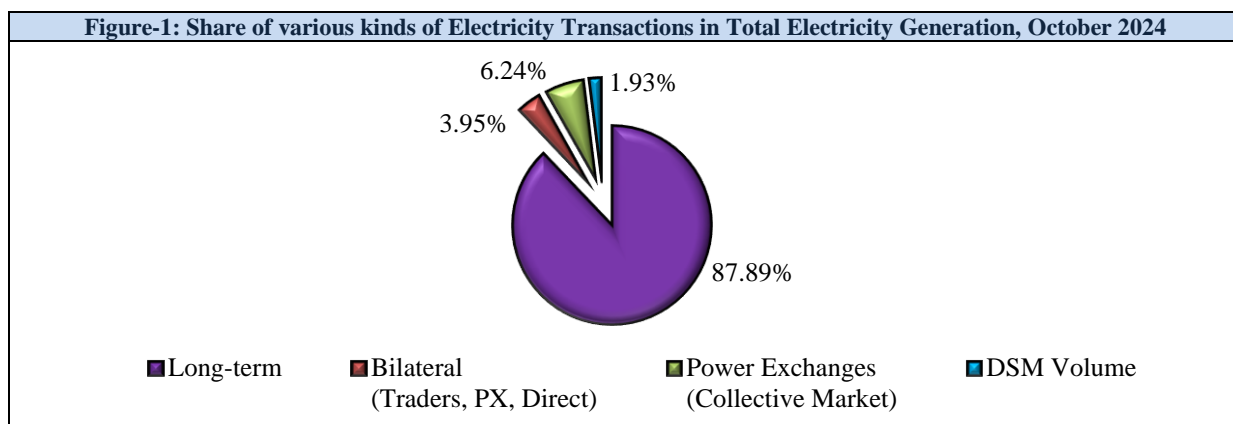
- a) The percentage of short-term transactions of electricity and DSM volume to total electricity generation was 12.11%.
- b) Of the total short-term transactions and DSM volume (16260.07 MU), 51.49% was transacted through power exchanges {DAM (including G-DAM & HP-DAM) and RTM}, followed by 32.58% through bilateral (i.e., through Traders, Term-Ahead contracts on power exchanges and directly between entities), and 15.93% through DSM.
- c) Of the total volume of electricity transacted through power exchanges, 45.95% of the volume was transacted in DAM (including G-DAM & HP-DAM), followed by 27.44% in RTM and 26.61% in Term Ahead Market (TAM) (including G-TAM & HP-TAM).
- d) The top 5 trading licensees had a share of 82.30% in the total volume traded by all the trading licensees.
- e) The Herfindahl Hirschman Index computed for the volume of electricity traded by trading licensees was 0.1825, indicating the moderate concentration of market power.
- f) The weighted average sale price of electricity transacted through trading licensees was ₹6.22/kWh.
- g) The weighted average price of electricity transacted in DAM of IEX was ₹4.03/kWh and, while no electricity was transacted in DAM of PXIL and HPX. The weighted average price of electricity transacted in G-DAM of IEX was ₹3.60/kWh, while no electricity was

transacted in G-DAM of PXIL and HPX. No electricity was transacted in HP-DAM of all the three power exchanges. The weighted average price of electricity transacted in the RTM of IEX, PXIL and HPX was ₹3.65/kWh, ₹9.89/kWh and ₹8.61/kWh, respectively.

- h) The weighted average price of electricity transacted in TAM of IEX, PXIL, and HPX was ₹6.45/kWh, ₹6.82/kWh, and ₹7.20/kWh, respectively. The weighted average price of electricity transacted in G-TAM of IEX, PXIL, and HPX was ₹7.29/kWh, ₹6.50/kWh, and ₹3.74/kWh, respectively. The weighted average price of electricity transacted in HP-TAM of PXIL was ₹15.39/kWh, while no electricity was traded in HPTAM of IEX and HPX.
- i) The average charge under DSM was ₹4.68/kWh.
- j) The weighted average trading margin charged by the trading licensees for bilateral transactions was ₹0.016/kWh.
- k) The top 5 electricity selling regional entities/states of short-term transactions were Jindal Power Limited Stage-II, Adani Power Limited - Raipur TPP, Madhya Pradesh, Karnataka and Jindal India Thermal Power Limited. The top 5 electricity purchasing regional entities/states of short-term transactions were Maharashtra, Gujarat, Rajasthan, Punjab and Delhi.
- l) The top 5 under-drawing/ over-injecting regional entities/states under DSM were Madhya Pradesh, Gujarat, Punjab, Haryana and Rajasthan. The top 5 over-drawing/ under-injecting regional entities/states under DSM were Maharashtra, Uttar Pradesh, Tamil Nadu, Rajasthan and West Bengal.
- m) During the month of October 2024, no congestion was experienced in any of the power exchanges.
- n) The market clearing volume of RECs transacted on IEX, PXIL, and HPX was 444161, 360199 and 10644, respectively. The weighted average market clearing price of these RECs was ₹114/MWh in IEX, ₹116/MWh in PXIL, and ₹120/MWh in HPX. The volume of RECs transacted through Trading Licensees in October 2024 was 21976. The weighted average trade price for the RECs transacted through traders was ₹133/MWh.

Table-1: VOLUME OF SHORT-TERM TRANSACTIONS OF ELECTRICITY AND DSM (ALL INDIA), OCTOBER 2024				
Sr. No	Transaction	Volume (MU)	% to short-term transactions and DSM Volume	% to Total Generation
A	Short-term transactions			
1	Bilateral ⁶ (Traders, PX, Direct)	5297.75	32.58	3.95
2	Power Exchanges (Collective Market)	8372.87	51.49	6.24
	(i) IEX			
	(a) DAM	4419.86	27.18	3.29
	(b) RTM	3122.66	19.20	2.33
	(c) GDAM	822.53	5.06	0.61
	(d) HP-DAM	0.00	0.00	0.00
	(ii) PXIL			
	(a) DAM	0.00	0.00	0.00
	(b) RTM	6.75	0.04	0.01
	(c) GDAM	0.00	0.00	0.00
	(d) HP-DAM	0.00	0.00	0.00
	(ii) HPX			
	(a) DAM	0.00	0.00	0.00
	(b) RTM	1.08	0.01	0.001
	(c) GDAM	0.00	0.00	0.00
	(d) HP-DAM	0.00	0.00	0.00
B	Through DSM	2589.44	15.93	1.93
Total Short-term transactions and DSM⁷		16260.07	-	12.11
Total Generation		134224.47	-	-

Source: NLDC



⁶ includes bilateral short-term transactions under GNA and T-GNA

⁷ Volume here has been finalized in consultation with Grid India, after resolving issues that emerged post implementation of GNA Regulations and transition to new WBES software by Grid India.

Figure-3: Share of volume transacted in different markets segments on Power Exchanges, October 2024

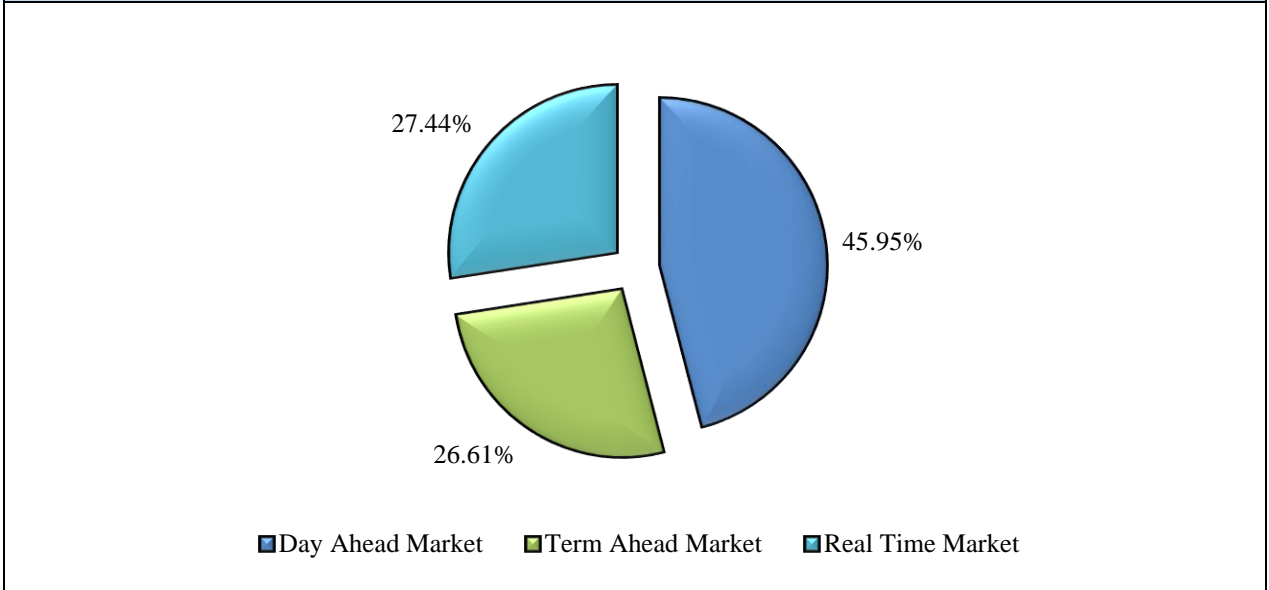


Figure-4: Volume of Short-term transactions and DSM Volume, October 2024 (Day-wise)

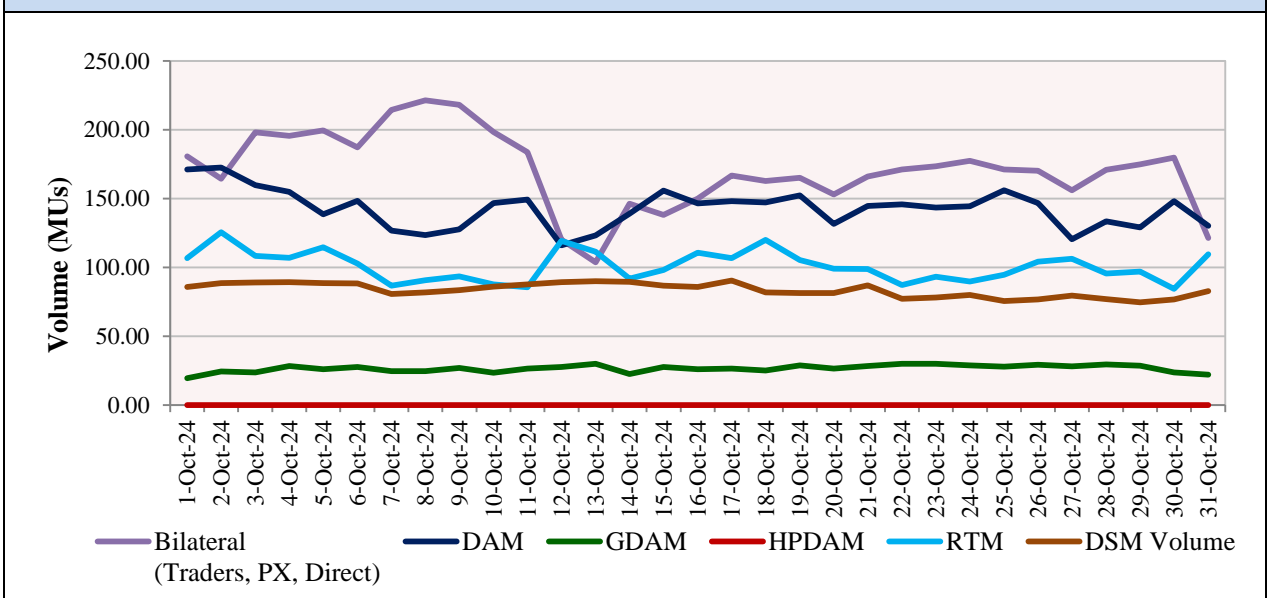


Table-2: PERCENTAGE SHARE OF ELECTRICITY TRANSACTED BY TRADING LICENSEES, OCTOBER 2024

Sr. No	Name of the Trading Licensee	% Share in total Volume traded by Trading Licensees
1	PTC India Ltd.	29.91
2	NTPC Vidyut Vyapar Nigam Ltd.	20.45
3	Adani Energy Solutions Step-Thirteen Ltd.	20.06
4	Tata Power Trading Company (P) Ltd.	6.90
5	Manikaran Power Ltd.	4.99
6	JSW Power Trading Company Ltd	3.70
7	Arunachal Pradesh Power Corporation (P) Ltd	3.29
8	GMR Energy Trading Ltd.	2.79
9	Ambitious Power Trading Company Ltd.	1.11
10	Kreate Energy (I) Pvt. Ltd.	0.91
11	Instinct Infra & Power Ltd.	0.86
12	RPG Power Trading Company Ltd.	0.69
13	Gita Power & Infrastructure Private Limited	0.69
14	Energedge Power Trading Pvt. Ltd.	0.50
15	Greenko Energies Pvt Ltd	0.49
16	Ideal Energy Solution Pvt. Ltd.	0.44
17	Statkraft Markets Pvt. Ltd.	0.24
18	Abja Power Private Limited	0.24
19	NLC India Ltd.	0.24
20	Saranyu Power Trading Private Limited	0.24
21	NEFA Power Trading Pvt. Ltd.	0.20
22	Altilium Energie Private Limited	0.18
23	Kundan International Pvt. Ltd.	0.17
24	Adarsh Stainless Pvt. Ltd.	0.17
25	SJVN Ltd.	0.11
26	Instant Ventures Pvt. Ltd.	0.10
27	Powerfull Energy Trading Pvt. Ltd.	0.09
28	Shree Cement Ltd.	0.05
29	Elsa Consultancy	0.04
30	Customized Energy Solutions India (P) Ltd.	0.04
31	Phillip Commodities India (P) Ltd.	0.03
32	Shubheksha Advisors Pvt. Ltd.	0.03
33	REL Power Trading LLP	0.03
34	Shell Energy Marketing and Trading India Pvt. Ltd.	0.01
35	Refex Industries Ltd.	0.01
36	Saini Power Transactor	0.002
37	Renesys Solar Pvt. Ltd.	0.001
TOTAL		100.00%
Top 5 trading licensees		82.30%
Herfindahl-Hirschman Index (HHI)		0.1825

Note 1: Volume of electricity transacted by the trading licensees includes bilateral transactions (inter-state & intra-state) and the transactions undertaken through power exchanges.

Source: Information submitted by trading licensees

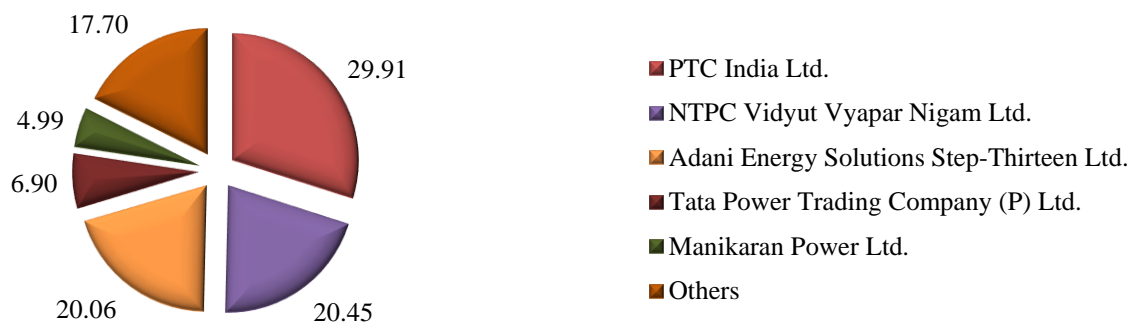
Figure 5: Percentage Share of Electricity Transacted by Trading Licensees, October 2024

Table-3: PRICE OF ELECTRICITY TRANSACTED THROUGH TRADERS, OCTOBER 2024

Sr.No	Item	Sale Price of Traders (₹/kWh)
1	Minimum	2.44
2	Maximum	10.00
3	Weighted Average	6.22

Source: Information submitted by trading licensees

Table-4: PRICE OF ELECTRICITY TRANSACTED THROUGH TRADERS (TIME-WISE), OCTOBER 2024

Sr.No	Period of Trade	Sale Price of Traders (₹/kWh)
1	RTC	6.27
2	PEAK	-
3	OFF PEAK	6.13

Source: Information submitted by trading licensees

Table-5: PRICE OF ELECTRICITY TRANSACTED IN DAY AHEAD MARKET, OCTOBER 2024

Sr.No	ACP	Price in IEX (₹/kWh)	Price in PXIL (₹/kWh)	Price in HPX (₹/kWh)
1	Minimum	0.50	-	-
2	Maximum	10.00	-	-
3	Weighted Average	4.03	-	-

Source: IEX, PXIL and HPX

Table-6: PRICE OF ELECTRICITY TRANSACTED IN GREEN DAY AHEAD MARKET, OCTOBER 2024

Sr.No	ACP	Price in IEX (₹/kWh)	Price in PXIL (₹/kWh)	Price in HPX (₹/kWh)
1	Minimum	0.50	-	-
2	Maximum	10.00	-	-
3	Weighted Average	3.60	-	-

Source: IEX, PXIL and HPX

Table-7: PRICE OF ELECTRICITY TRANSACTED IN HIGH PRICE DAY AHEAD MARKET, OCTOBER 2024

Sr.No	ACP	Price in IEX (₹/kWh)	Price in PXIL (₹/kWh)	Price in HPX (₹/kWh)
1	Minimum	-	-	-
2	Maximum	-	-	-
3	Weighted Average	-	-	-

Source: IEX, PXIL and HPX

Table-8: PRICE OF ELECTRICITY TRANSACTED IN REAL TIME MARKET, OCTOBER 2024

Sr.No	ACP	Price in IEX (₹/kWh)	Price in PXIL (₹/kWh)	Price in HPX (₹/kWh)
1	Minimum	0.42	3.08	7.00
2	Maximum	10.00	10.00	10.00
3	Weighted Average	3.65	9.89	8.61

Source: IEX, PXIL and HPX

Table-9: VOLUME AND PRICE OF ELECTRICITY IN TERM AHEAD MARKET OF IEX, OCTOBER 2024

Sr.No	Term ahead contracts	Actual Scheduled Volume (MU)	Weighted Average Price (₹/kWh)
1	Intra-Day Contracts	9.79	9.60
2	Day Ahead Contingency Contracts	101.76	8.98
3	Daily Contracts	300.66	7.36
4	Monthly Contracts	2.23	5.13
5	Any Day Single Sided Contracts	845.45	5.78
	Total	1259.88	6.45

Source: IEX

Table-10: VOLUME AND PRICE OF ELECTRICITY IN TERM AHEAD MARKET OF PXIL, OCTOBER 2024			
Sr.No	Term ahead contracts	Actual Scheduled Volume (MU)	Weighted Average Price (₹/kWh)
1	Intra-Day Contracts	17.66	9.10
2	Day Ahead Contingency Contracts	323.15	7.68
3	Daily Contracts	333.13	7.01
4	Any Day Single Sided Contracts	421.24	5.93
	Total	1095.18	6.82

Source: PXIL

Table-11: VOLUME AND PRICE OF ELECTRICITY IN TERM AHEAD MARKET OF HPX, OCTOBER 2024			
Sr.No	Term ahead contracts	Actual Scheduled Volume (MU)	Weighted Average Price (₹/kWh)
1	Intra-Day Contracts	14.34	9.50
2	Day Ahead Contingency Contracts	152.95	8.32
3	Daily Contracts	192.31	7.21
4	Any Day Single Sided Contracts	184.33	6.08
	Total	543.93	7.20

Source: HPX

Table-12: VOLUME AND PRICE OF ELECTRICITY IN GREEN TAM OF IEX, OCTOBER 2024			
Sr. No	Green Term ahead contracts	Actual Scheduled Volume (MU)	Weighted Average Price (₹/kWh)
1	Intra-Day Contracts	0.06	10.00
2	Day Ahead Contingency Contracts	12.52	8.35
3	Daily Contracts	29.20	7.00
4	Any Day Single Sided Contracts	1.51	3.82
	Total	43.29	7.29

Source: IEX

Table-13: VOLUME AND PRICE OF ELECTRICITY IN GREEN TAM OF PXIL, OCTOBER 2024			
Sr. No	Green Term ahead contracts	Actual Scheduled Volume (MU)	Weighted Average Price (₹/kWh)
1	Day Ahead Contingency Contracts	13.11	7.42
2	Daily Contracts	10.77	5.38
	Total	23.87	6.50

Source: PXIL

Table-14: VOLUME AND PRICE OF ELECTRICITY IN GREEN TAM OF HPX, OCTOBER 2024			
Sr. No	Green Term ahead contracts	Actual Scheduled Volume (MU)	Weighted Average Price (₹/kWh)
1	Day Ahead Contingency Contracts	52.84	3.81
2	Daily Contracts	10.00	3.34
	Total	62.84	3.74

Source: HPX

Table-15: VOLUME AND PRICE OF ELECTRICITY IN HIGH PRICE TAM OF IEX, OCTOBER 2024			
Sr. No	High Price Term ahead contracts	Actual Scheduled Volume (MU)	Weighted Average Price (₹/kWh)
1	No Trade	0.00	-
	Total	0.00	-

Source: IEX

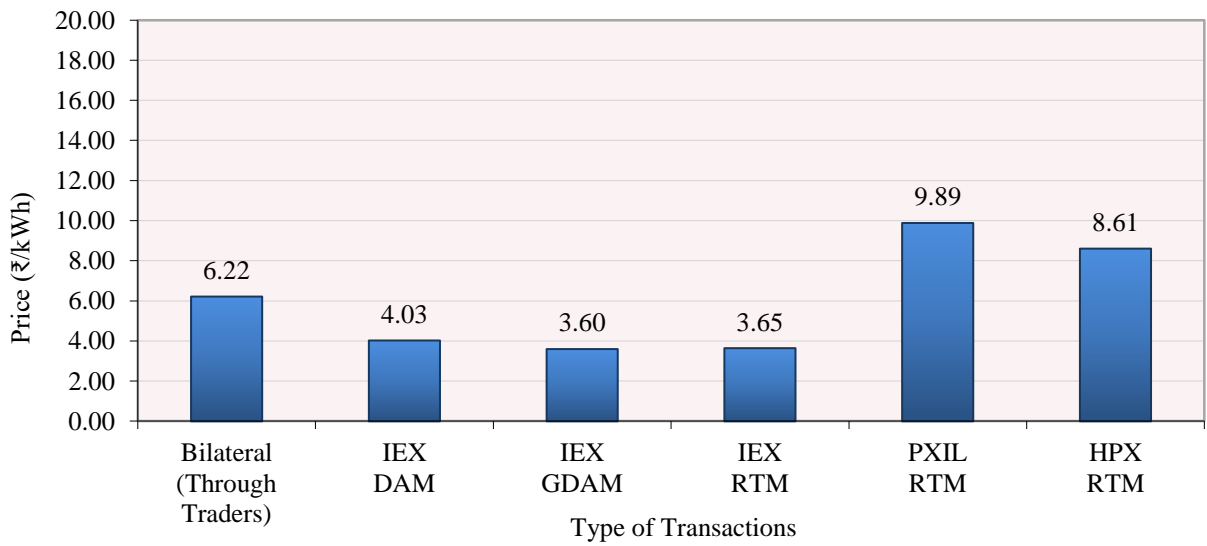
Table-16: VOLUME AND PRICE OF ELECTRICITY IN HIGH PRICE TAM OF PXIL, OCTOBER 2024			
Sr. No	High Price Term ahead contracts	Actual Scheduled Volume (MU)	Weighted Average Price (₹/kWh)
1	Intra-Day Contracts	6.75	15.39
	Total	6.75	15.39

Source: PXIL

Table-17: VOLUME AND PRICE OF ELECTRICITY IN HIGH PRICE TAM OF HPX, OCTOBER 2024			
Sr. No	High Price Term ahead contracts	Actual Scheduled Volume (MU)	Weighted Average Price (₹/kWh)
1	No Trade	0.00	-
	Total	0.00	-

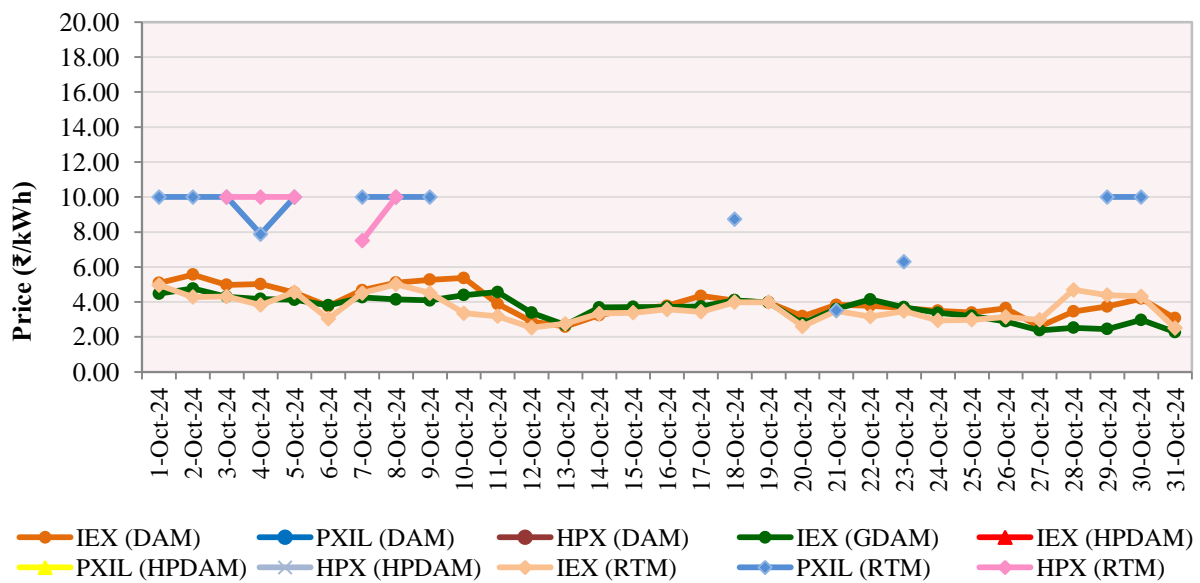
Source: HPX

Figure-6: Weighted Average Price of Short-term Transactions of Electricity, October 2024



Note: No electricity was transacted in DAM of PXIL & HPX, G-DAM of PXIL & HPX and in HP-DAM of all power exchanges during October 2024

Figure-7: Weighted Average Price of Short-term Transactions of Electricity, October 2024 (Day-wise)



Note: No electricity was transacted in DAM of PXIL & HPX, G-DAM of PXIL & HPX and in HP-DAM of all power exchanges during October 2024

Table-18: VOLUME OF ELECTRICITY SOLD THROUGH BILATERAL (TRADERS, PX & DIRECT), OCTOBER 2024

Name of the Entity	Volume of Sale (MUs)	% of Volume
Jindal Power Limited, Stage-2	377.59	7.13
IL&FS TAMIL NADU POWER COMPANY LIMITED	335.24	6.33
Adani Power Limited-Raipur TPP	316.80	5.98
Gujarat	220.27	4.16
Jaypee Nigrie Super Thermal Power Plant	213.63	4.03
SKS Power Generation Chhattisgarh Limited	202.49	3.82
Uttar Pradesh	189.51	3.58
Jindal India Thermal Power Limited	181.13	3.42
SIMHAPURI ENERGY LIMITED	179.67	3.39
Karnataka	178.23	3.36
DHARIWAL STU MH	170.03	3.21
MAHAN ENERGEN LIMITED U#2	155.39	2.93
MB POWER (MADHYA PRADESH) LIMITED	151.11	2.85
Jindal Power Limited, Stage-1	144.53	2.73
COASTAL ENERGEN PRIVATE LIMITED	143.74	2.71
Adani Power Limited - Raigarh TPP	142.04	2.68
IND BARATH ENERGY UTKAL LIMITED	128.32	2.42
Odisha	127.03	2.40
SHREE CEMENT LIMITED TPS	107.02	2.02
D B Power Limited	104.60	1.97
IGSTPS JHAJJAR	99.75	1.88
Damodar Valley Corporation	95.98	1.81
Chhattisgarh	86.63	1.64
Jhabua Power Limited	85.74	1.62
Rajasthan	84.51	1.60
Madhya Pradesh	79.73	1.51
West Bengal	78.18	1.48
R.K.M POWERGEN PRIVATE LIMITED	77.85	1.47
ACB (INDIA) LIMITED	64.13	1.21
Maharashtra	55.89	1.05
Telangana	51.87	0.98
Sembcorp Energy India Limited Project II	45.43	0.86
Delhi	43.83	0.83
MAHAN ENERGEN LIMITED U#1	42.30	0.80
SEMBCORP ENERGY INDIA LIMITED	36.93	0.70
SEIL ENERGY INDIA LIMITED	35.41	0.67
Tamil Nadu	33.25	0.63
HIMACHAL PRADESH	31.64	0.60
ADANI RENEWABLE ENERGY HOLDING FOUR LIMITED	28.23	0.53
Serentica Renewables India 1 Private Limited	25.74	0.49
GMR Warora Energy Limited	25.47	0.48
Meghalaya	25.37	0.48
Sorang HEP (Himachal Sorang Power Pvt. Ltd.)	21.79	0.41
MEENAKSHI ENERGY LIMITED	21.63	0.41
NEA - Bihar STU	18.03	0.34
TPSL Banderwala SECI 100_INF	16.78	0.32
Maruti Clean Coal and Power Limited	16.53	0.31
DGEN MEGA POWER PROJECT	15.48	0.29
TRN ENERGY PRIVATE LIMITED	15.19	0.29
Punjab	14.28	0.27
AD HYDRO POWER LIMITED	13.48	0.25
Dhariwal ISTS	13.21	0.25
Ramagundam Floating solar	13.12	0.25
IRCON RENEWABLE POWER LIMITED Infirm	9.72	0.18

NEA Nepal Solu Khola (Dudhkoshi) Hydropower Project	9.15	0.17
OSTRO KANNADA POWER PRIVATE LIMITED	8.22	0.16
ReNew Surya Ravi Private Limited	7.23	0.14
MAYA KHOLA HYDRO POWER PROJECT	6.89	0.13
Modi Khola Hydropower Project	6.87	0.13
Sikkim	6.29	0.12
ADANI RENEWABLE ENERGY FORTY ONE LIMITED_infirm	5.56	0.11
Dudhkunda Khola Hydropower Project	5.54	0.10
Ratnagiri Gas & Power Private Limited	5.45	0.10
KARCHAM WANGTOO HYDRO ELECTRIC PLANT.	5.02	0.09
ADANI WIND ENERGY KUTCHH FOUR Ltd. Nakhatrana	4.89	0.09
SEIL Energy India Limited Project II	4.85	0.09
Singoli Bhatwari HEP	4.61	0.09
Jammu Kashmir	3.91	0.07
Arunachal Pradesh	3.26	0.06
Andhra Pradesh	3.13	0.06
IRCON RENEWABLE POWER LIMITED	3.04	0.06
TPSL 200MW TPTCL Banderwala	2.08	0.04
DHARIWAL STU OTH	2.02	0.04
NTPC SOLAPUR SOLAR PV Station	1.63	0.03
BHARAT ALUMINIUM COMPANY LTD	1.36	0.03
Haryana	1.25	0.02
WIND FIVE RENERGY LIMITED	0.65	0.01
DADRI	0.63	0.01
Mizoram	0.59	0.01
Palatana Plant	0.56	0.01
Goa SR	0.53	0.01
Kawas	0.46	0.01
NTPC Jhanor Gandhar GPS	0.18	0.003
Kerala	0.15	0.003
Nani Virani Wind Energy Private Limited	0.12	0.002
AMBUJA CEMENTS LIMITED(Khavda PSS-3)_infirm	0.08	0.001
Chuzachen HEP	0.05	0.001
JORETHANG LOOP HEP, DANS ENERGY PRIVATE LIMITED	0.03	0.0005
ANTA	0.01	0.0002
Total	5297.75	100.00
Volume Sold by top 5 Regional Entities	1463.52	27.63
Herfindahl-Hirschman Index		0.0322

Source: NLDC

Table-19: VOLUME OF ELECTRICITY PURCHASED THROUGH BILATERAL (TRADERS, PX & DIRECT), OCTOBER 2024

Name of the Entity	Volume of Purchase (MUs)	% of Volume
Rajasthan	965.11	18.22
Gujarat	853.41	16.11
Maharashtra	607.76	11.47
Tamil Nadu	452.89	8.55
Andhra Pradesh	363.09	6.85
Uttar Pradesh	273.04	5.15
Delhi	270.12	5.10
Kerala	207.58	3.92
HIMACHAL PRADESH	154.97	2.93
Chhattisgarh	152.89	2.89
Jammu Kashmir	148.40	2.80
COASTAL ENERGEN PRIVATE LIMITED	124.39	2.35
West Bengal	120.41	2.27
Odisha	110.75	2.09
Uttarakhand	108.55	2.05
Madhya Pradesh	96.40	1.82
Bihar	59.51	1.12
ArcelorMittal Nippon Steel India Limited	50.68	0.96
Punjab	41.24	0.78
BHARAT ALUMINIUM COMPANY LTD (Bulk Consumer)	32.46	0.61
Goa WR	22.50	0.42
Jharkhand	17.99	0.34
Haryana	15.19	0.29
Assam	14.02	0.26
Adani Power Limited - Raigarh TPP	9.60	0.18
Karnataka	8.68	0.16
Chandigarh (UT)	6.84	0.13
Meghalaya	4.33	0.08
MAHAN ENERGEN LIMITED U#2	2.07	0.04
MEENAKSHI ENERGY LIMITED	1.68	0.03
Tripura	1.15	0.02
Sikkim	0.07	0.001
TOTAL	5297.75	100.00
Volume Purchased by top 5 Regional Entities	3242.25	61.20
Herfindahl-Hirschman Index		0.0962

Source: NLDC

Table-20: VOLUME OF ELECTRICITY SOLD IN DAY AHEAD MARKET THROUGH POWER EXCHANGES, OCTOBER 2024

Name of the Entity	Volume of Sale (MUs)	% of Volume
Odisha	318.12	7.20
Jindal Power Limited, Stage-2	267.71	6.06
Adani Power Limited-Raipur TPP	246.33	5.57
MAHAN ENERGEN LIMITED U#1	239.43	5.42
Uttar Pradesh	234.46	5.30
Assam	233.00	5.27
Jindal India Thermal Power Limited	197.11	4.46
Madhya Pradesh	170.92	3.87
MAHAN ENERGEN LIMITED U#2	156.76	3.55
Adani Power Limited - Raigarh TPP	140.36	3.18
Karnataka	118.58	2.68
Telangana	115.96	2.62
Jindal Power Limited, Stage-1	114.27	2.59
Jaypee Nigrie Super Thermal Power Plant	103.34	2.34
KAMENG HYDRO POWER STATION	81.92	1.85
Jindal Steel & Power Ltd , DCP	78.08	1.77
SEIL ENERGY INDIA LIMITED	74.11	1.68
Chhattisgarh	63.09	1.43
Government of Himachal Pradesh_NJHPS	54.51	1.23
Haryana	49.09	1.11
IND BARATH ENERGY UTKAL LIMITED	44.72	1.01
D B Power Limited	44.12	1.00
ACB (INDIA) LIMITED	43.40	0.98
Gujarat	43.03	0.97
KARCHAM WANGTOO HYDRO ELECTRIC PLANT.	42.15	0.95
West Bengal	40.31	0.91
Tamil Nadu	37.96	0.86
Basochhu Hydropower Plant Bhutan	35.83	0.81
ADANI RENEWABLE ENERGY HOLDING FOUR LIMITED	35.58	0.80
SKS Power Generation Chhattisgarh Limited	33.42	0.76
Bihar	30.25	0.68
RENEW SURYA PRATAP PRIVATE LIMITED	28.58	0.65
ReNew Surya Ravi Private Limited	28.35	0.64
SHREE CEMENT LIMITED TPS	28.22	0.64
Rajasthan	27.58	0.62
SIMHAPURI ENERGY LIMITED	26.84	0.61
NTPC Farakka stage I	26.53	0.60
NTPC Talcher Stage I	26.31	0.60
Andhra Pradesh	24.76	0.56
Adani Green Energy Twenty Five B Limited_infirm	24.49	0.55
Himachal Pradesh	24.24	0.55
KANTI BIJLEE UTPADAN NIGAM LIMITED	24.20	0.55
BHARAT ALUMINIUM COMPANY LTD	22.30	0.50
Government of Himachal Pradesh_Koldam HEP	22.24	0.50
Chandigarh (UT)	21.06	0.48
AD HYDRO POWER LIMITED	20.51	0.46
Maharashtra	19.93	0.45
Mizoram	19.90	0.45
NABINAGAR POWER GENERATING COMPANY LIMITED	19.70	0.45
NTPC Talcher Super Thermal Power Station Stage II	18.69	0.42
SEIL Energy India Limited Project II	18.05	0.41
Adept Renewable Technologies Private Limited	17.30	0.39
Delhi	17.23	0.39
Government of Himachal Pradesh_RampurHEP	16.23	0.37
Amp Energy Green Six Private Limited	16.10	0.36
NTPC North Karanpura STPS	15.08	0.34
Nikachhu Hydropower Project	14.55	0.33

ADANI SOLAR ENERGY JAISALMER TWO PRIVATE LIMITED(Project-2)	14.08	0.32
Palatana Plant	13.08	0.30
Sainj HEP	12.13	0.27
Sikkim	11.79	0.27
DGEN MEGA POWER PROJECT	11.68	0.26
Jharkhand	11.50	0.26
ADANI GREEN ENERGY TWENTY FIVE LIMITED_infirm	11.08	0.25
Damodar Valley Corporation	10.90	0.25
ADANI WIND ENERGY KUTCHH FOUR Ltd. Nakhatrana	10.10	0.23
NTPC BARH Stage II	9.37	0.21
Government of Himachal Pradesh_ CHAMERA2HEP	8.81	0.20
Nagaland	8.80	0.20
ADANI SOLAR ENERGY RJ TWO PRIVATE LIMITED	8.42	0.19
MB POWER (MADHYA PRADESH) LIMITED	8.05	0.18
Government of Himachal Pradesh _ Chamera1HEP	7.15	0.16
JUNIPER GREEN COSMIC PRIVATE LIMITED	6.95	0.16
Jammu Kashmir	6.84	0.15
Singoli Bhatwari HEP	6.60	0.15
Government of Himachal Pradesh _ Chamera3HEP	6.37	0.14
ADANI RENEWABLE ENERGY FIFTY FIVE LIMITED_Infirm	6.13	0.14
NTPC Sipat Stage I	6.08	0.14
IL&FS TAMIL NADU POWER COMPANY LIMITED	5.74	0.13
ADANI SOLAR ENERGY JODHPUR TWO LIMITED	5.61	0.13
Uttarakhand	5.55	0.13
Bongaigaon Thermal Power Station NTPC	5.16	0.12
Punjab	5.05	0.11
NTPC Farakka stage III	4.78	0.11
Adani Green Energy Twenty Six B Limited_infirm	4.77	0.11
NTPC Vindhyachal Stage I	4.52	0.10
NTPC Simhadri Stage II	4.46	0.10
NTPC BARH Stage I	4.38	0.10
NTPC Korba Stage I &II	4.35	0.10
RENEW SURYA OJAS PRIVATE LIMITED-Wind	4.20	0.09
Government of Himachal Pradesh_ Parbati3HEP	4.15	0.09
NTPP BRBCL	4.05	0.09
R.K.M POWERGEN PRIVATE LIMITED	3.99	0.09
ADANI RENEWABLE ENERGY FORTY ONE LIMITED_infirm	3.91	0.09
Kerala	3.71	0.08
TRN ENERGY PRIVATE LIMITED	3.68	0.08
Adani Green Energy Twenty Five A Limited_Infirm	3.59	0.08
Onevolt Energy Private Limited	3.48	0.08
JUNIPER GREEN COSMIC PRIVATE LIMITED_INFIRM	3.40	0.08
Ramagundam Floating solar	3.34	0.08
IGSTPS JHAJJAR	3.09	0.07
Government of Himachal Pradesh_ BairasuilHEP	2.99	0.07
NTPC Kahalgaon stage I	2.88	0.07
NTPC Tanda Stage II	2.81	0.06
The Tata Power Co Ltd (MTPS)	2.76	0.06
Transition Energy Services Private Limited	2.46	0.06
DHARIWAL STU OTH	2.30	0.05
NTPC Sipat Stage II	2.30	0.05
Serentica Renewables India 5 Private Limited	2.30	0.05
NTPC Vindhyachal Stage IV	2.26	0.05
NTPC Vindhyachal Stage III	2.26	0.05
AMBUJA CEMENTS LIMITED(Khavda PSS-3)_ infirm	2.24	0.05
Dhariwal ISTS	2.21	0.05
Budhil HEP (Greenko Budhil Hydro Power Pvt. Ltd.)	2.18	0.05
NTPC Singrauli	2.09	0.05
WIND FIVE RENERGY LIMITED	1.98	0.04

TPSL 200MW TPTCL Banderwala	1.96	0.04
NTPC Dadri Stage I	1.80	0.04
NTPC Kahalgaon stage II	1.76	0.04
Maruti Clean Coal and Power Limited	1.69	0.04
NTPC Korba Stage III	1.62	0.04
Meghalaya	1.58	0.04
Pondicherry UT	1.50	0.03
Goa WR	1.50	0.03
NTPC Lara Stage I	1.43	0.03
OSTRO KANNADA POWER PRIVATE LIMITED	1.40	0.03
GMR KAMALANGA ENERGY LTD-CTU	1.25	0.03
NTPC Vindhyachal Stage II	1.23	0.03
Serentica Renewables India 5 Private Limited- Infirm	1.01	0.02
Simhadri FSP 15 MW	0.99	0.02
GMR Warora Energy Limited	0.89	0.02
NTPC KUDGI	0.85	0.02
NTPC Rihand stage III	0.82	0.02
NTPC Rihand stage II	0.81	0.02
NTPC Gadarwara	0.73	0.02
NTPC Vindhyachal Stage V	0.66	0.01
NTPC Unchahar Stage IV	0.62	0.01
Simhadri Floating solar (10 MW)	0.61	0.01
NTPC khargone	0.61	0.01
COASTAL ENERGEN PRIVATE LIMITED	0.55	0.01
ADANI WIND ENERGY KUTCHH FOUR Ltd. Nakhatrana (infirm)	0.50	0.01
NTPC Telangana	0.48	0.01
NTPC Darlipali	0.30	0.01
MEENAKSHI ENERGY LIMITED	0.30	0.01
NTPC Solapur	0.27	0.01
Jhabua Power Limited	0.26	0.01
NTPC Unchahar Stage I	0.24	0.01
Tripura	0.23	0.01
NLC Tamilnadu Power Limited	0.21	0.00
ADANI SOLAR ENERGY RJ TWO PRIVATE LIMITED (infirm)	0.20	0.005
NTPC Ramagundam Stage III	0.20	0.004
TPSL Banderwala SECI 100_INF	0.18	0.004
NTPC Rihand stage I	0.16	0.004
NTPC Unchahar Stage II	0.16	0.004
ADANI GREEN ENERGY TWENTY SIX A LIMITED_infirm	0.14	0.003
NLC INDIA LIMITED THERMAL POWER STATION I EXPANSION	0.11	0.002
NTPC Dadri Stage II	0.07	0.001
NTPC Ramagundam Stage I &II	0.07	0.001
NTPC Unchahar Stage III	0.06	0.001
NTPC Mouda Stage I	0.03	0.001
NTPC Mouda Stage II	0.03	0.001
Nani Virani Wind Energy Private Limited	0.02	0.001
RENEW SURYA OJAS PRIVATE LIMITED_INFIRM	0.02	0.0005
NLC INDIA LIMITED NEYVELI NEW THERMAL POWER STATION	0.02	0.0003
NLC INDIA LIMITED THERMAL POWER STATION II STAGE I	0.002	0.0001
NLC INDIA LIMITED THERMAL POWER STATION II EXPANSION	0.002	0.00004
NLC INDIA LIMITED THERMAL POWER STATION II STAGE II	0.002	0.00004
NTECL VALLUR	0.001	0.00003
Total	4419.86	100.00
Volume sold by top 5 Regional Entities	1306.05	29.55
Herfindahl-Hirschman Index		0.0319

Source: NLDC

Table-21: VOLUME OF ELECTRICITY PURCHASED IN DAY AHEAD MARKET THROUGH POWER EXCHANGES, OCTOBER 2024

Name of the Entity	Volume of Purchase (MUs)	% of Volume
Gujarat	695.76	15.74
Maharashtra	617.08	13.96
Uttar Pradesh	362.33	8.20
Telangana	350.33	7.93
Delhi	312.53	7.07
Chhattisgarh	261.34	5.91
Uttarakhand	222.65	5.04
Daman and Diu - Dadra and Nagar Haveli	212.47	4.81
Tamil Nadu	211.97	4.80
Rajasthan	205.60	4.65
West Bengal	185.71	4.20
Punjab	157.96	3.57
Andhra Pradesh	144.89	3.28
Jammu Kashmir	117.31	2.65
Madhya Pradesh	60.22	1.36
Haryana	44.90	1.02
Karnataka	41.37	0.94
ArcelorMittal Nippon Steel India Limited	40.94	0.93
Damodar Valley Corporation	27.37	0.62
Kerala	26.42	0.60
BHARAT ALUMINIUM COMPANY LTD (Bulk Consumer)	26.29	0.59
Himachal Pradesh	24.60	0.56
North Central Railway Prayagraj	22.71	0.51
Odisha	13.62	0.31
Chandigarh (UT)	7.72	0.17
Jhabua Power Limited	6.17	0.14
Jharkhand	5.33	0.12
Bihar	4.69	0.11
Tripura	2.82	0.06
Meghalaya	2.69	0.06
Goa WR	2.03	0.05
Goa SR	0.77	0.02
MEENAKSHI ENERGY LIMITED	0.65	0.01
MB POWER (MADHYA PRADESH) LIMITED	0.61	0.01
TOTAL	4419.86	100.00
Volume purchased by top 5 Regional Entities	2338.04	52.90
Herfindahl-Hirschman Index		0.0806

Source: NLDC

Table-22: VOLUME OF ELECTRICITY SOLD IN GREEN DAY AHEAD MARKET THROUGH POWER EXCHANGES, OCTOBER 2024

Name of the Entity	Volume of Sale (MUs)	% of Volume
Karnataka	113.56	13.81
ADANI RENEWABLE ENERGY HOLDING FOUR LIMITED	109.52	13.32
Adani Green Energy Twenty Five B Limited_infirm	74.43	9.05
Meghalaya	51.16	6.22
Himachal Pradesh	39.32	4.78
ADANI GREEN ENERGY TWENTY FIVE LIMITED_infirm	38.93	4.73
ADANI SOLAR ENERGY RJ TWO PRIVATE LIMITED	31.62	3.84
ADANI RENEWABLE ENERGY FORTY ONE LIMITED_infirm	23.16	2.82
Singoli Bhatwari HEP	22.98	2.79
ADANI RENEWABLE ENERGY FIFTY FIVE LIMITED_Infirm	21.16	2.57
RENEW SURYA OJAS PRIVATE LIMITED-Wind	19.16	2.33
TPSL 200MW TPTCL Banderwala	17.75	2.16
Uttarakhand	17.67	2.15
Adani Green Energy Twenty Six B Limited_infirm	17.31	2.10
Jammu Kashmir	16.28	1.98
Transition Green Energy Private Limited	15.80	1.92
ACME PHALODI SOLAR ENERGY PRIVATE LIMITED_INFIRM	13.41	1.63
Adani Green Energy Twenty Five A Limited_Infirm	13.10	1.59
ADANI WIND ENERGY KUTCHH FOUR Ltd. Nakhatrana	13.07	1.59
Andhra Pradesh	13.03	1.58
Madhya Pradesh	12.60	1.53
Uttar Pradesh	10.95	1.33
AMBUJA CEMENTS LIMITED(Khavda PSS-3)_infirm	10.19	1.24
Transition Energy Services Private Limited	9.78	1.19
Ayana Renewable Power Three Private Limited Infirm	9.71	1.18
Maharashtra	8.09	0.98
Sikkim	7.91	0.96
VENA ENERGY VIDYUTH PRIVATE LIMITED_INFIRM	6.61	0.80
Rajasthan	5.74	0.70
Chhattisgarh	5.02	0.61
ReNew Surya Ravi Private Limited	4.13	0.50
Serentica Renewables India 5 Private Limited- Infirm	4.09	0.50
JSW RENEW ENERGY LIMITED INFIRM	4.03	0.49
Grian Energy Private Limited	4.01	0.49
West Bengal	3.71	0.45
Delhi	3.61	0.44
ADANI WIND ENERGY KUTCHH FOUR Ltd. Nakhatrana (infirm)	3.07	0.37
WIND FIVE RENERGY LIMITED	2.64	0.32
SEMBCORP GREEN INFRA PRIVATE LIMITED (INFIRM)	2.39	0.29
VENA ENERGY VIDYUTH PRIVATE LIMITED_SOLAR_INFIRM	2.28	0.28
ADANI SOLAR ENERGY JAISALMER TWO PRIVATE LIMITED(Project-2)	2.19	0.27
OSTRO KANNADA POWER PRIVATE LIMITED	2.18	0.27
Serentica Renewables India 5 Private Limited	2.17	0.26
CONTINUUM POWER TRADING (TN) PRIVATE LIMITED	2.01	0.24
TPSL Banderwala SECI 100_INF	1.66	0.20
JUNIPER GREEN COSMIC PRIVATE LIMITED	1.58	0.19
Nani Virani Wind Energy Private Limited	1.51	0.18
Ramagundam Floating solar	1.04	0.13
ACME RAISAR SOLAR ENERGY PRIVATE LIMITED_INFIRM	1.01	0.12
JUNIPER GREEN COSMIC PRIVATE LIMITED_INFIRM	0.93	0.11

ADANI SOLAR ENERGY JODHPUR TWO LIMITED	0.90	0.11
Amplus Ages Private Limited	0.77	0.09
Simhadri FSP 15 MW	0.45	0.05
ADANI GREEN ENERGY TWENTY SIX A LIMITED_infirm	0.42	0.05
Simhadri Floating solar (10 MW)	0.30	0.04
ADANI SOLAR ENERGY RJ TWO PRIVATE LIMITED (infirm)	0.27	0.03
RENEW SURYA OJAS PRIVATE LIMITED_INFIRM	0.14	0.02
Total	822.53	100.00
Volume sold by top 5 Regional Entities	388.00	47.17
Herfindahl-Hirschman Index		0.0622

Source: NLDC

Table-23: VOLUME OF ELECTRICITY PURCHASED IN GREEN DAY AHEAD MARKET THROUGH POWER EXCHANGES, OCTOBER 2024

Name of the Entity	Volume of Purchase (MUs)	% of Volume
Maharashtra	162.96	19.81
ArcelorMittal Nippon Steel India Limited	132.88	16.15
Damodar Valley Corporation	101.81	12.38
Odisha	76.04	9.24
Tamil Nadu	58.99	7.17
Jharkhand	38.95	4.74
Punjab	36.60	4.45
Haryana	31.23	3.80
Goa WR	30.49	3.71
Delhi	25.43	3.09
Gujarat	23.20	2.82
Uttar Pradesh	20.44	2.48
Karnataka	18.31	2.23
Kerala	13.84	1.68
Goa SR	12.20	1.48
Andhra Pradesh	9.80	1.19
Telangana	7.87	0.96
North Central Railway Prayagraj	7.83	0.95
Madhya Pradesh	7.13	0.87
Chhattisgarh	5.40	0.66
Daman and Diu - Dadra and Nagar Haveli	0.63	0.08
Meghalaya	0.50	0.06
TOTAL	822.53	100.00
Volume purchased by top 5 Regional Entities	532.69	64.76
Herfindahl-Hirschman Index		0.1052

Source: NLDC

Table-24: VOLUME OF ELECTRICITY SOLD IN HIGH PRICE DAY AHEAD MARKET THROUGH POWER EXCHANGES, OCTOBER 2024		
Name of the Entity	Volume of Sale (MU)	% of Volume
No Trade	0.00	-
TOTAL	0.00	0.00
Volume sold by top 5 Regional Entities	0.00	-
Herfindahl-Hirschman Index		-

Source: NLDC

Table-25: VOLUME OF ELECTRICITY PURCHASED IN HIGH PRICE DAY AHEAD MARKET THROUGH POWER EXCHANGES, OCTOBER 2024		
Name of the Entity	Volume of Purchase (MU)	% of Volume
No Trade	0.00	-
TOTAL	0.00	0.00
Volume purchased by top 5 Regional Entities	0.00	-
Herfindahl-Hirschman Index		-

Source: NLDC

Table-26: VOLUME OF ELECTRICITY SOLD IN REAL TIME MARKET THROUGH POWER EXCHANGES, OCTOBER 2024

Name of the Entity	Volume of Sale (MUs)	% of Volume
Madhya Pradesh	381.64	12.19
Bihar	326.51	10.43
Tamil Nadu	186.52	5.96
Odisha	171.18	5.47
Uttar Pradesh	108.92	3.48
Haryana	99.41	3.18
Assam	98.23	3.14
Karnataka	88.52	2.83
West Bengal	87.76	2.80
NEPAL ELECTRICITY AUTHORITY MUZAFFARPUR	74.94	2.39
Andhra Pradesh	70.32	2.25
Arunachal Pradesh	64.74	2.07
Jharkhand	62.28	1.99
Chhattisgarh	47.31	1.51
NEPAL ELECTRICITY AUTHORITY TANAKPUR	42.42	1.35
NTPC Farakka stage I	41.94	1.34
Telangana	40.27	1.29
KAMENG HYDRO POWER STATION	39.36	1.26
Himachal Pradesh	37.56	1.20
NABINAGAR POWER GENERATING COMPANY LIMITED	36.81	1.18
BHARAT ALUMINIUM COMPANY LTD	33.69	1.08
SEIL ENERGY INDIA LIMITED	33.25	1.06
Manipur	32.30	1.03
Punjab	28.76	0.92
Delhi	28.19	0.90
MEENAKSHI ENERGY LIMITED	24.76	0.79
Jindal Power Limited, Stage-2	24.32	0.78
NTPC Kahalgaon stage II	22.07	0.70
Adani Power Limited - Raigarh TPP	20.83	0.67
Maharashtra	20.64	0.66
NTPC Talcher Super Thermal Power Station Stage II	20.27	0.65
Adani Power Limited-Raipur TPP	18.84	0.60
ADANI RENEWABLE ENERGY HOLDING FOUR LIMITED	18.15	0.58
NTPC Sipat Stage I	17.73	0.57
NTPC Tanda Stage II	16.78	0.54
MAHAN ENERGEN LIMITED U#1	15.99	0.51
Jammu Kashmir	15.77	0.50
Pondicherry UT	15.45	0.49
MAHAN ENERGEN LIMITED U#2	15.24	0.49
Gujarat	15.08	0.48
Uttarakhand	13.88	0.44
NTPC BARH Stage II	12.80	0.41
TRN ENERGY PRIVATE LIMITED	12.62	0.40
NLC INDIA LIMITED NEYVELI NEW THERMAL POWER STATION	12.17	0.39
NTPC Singrauli	12.12	0.39
RENEW SURYA PRATAP PRIVATE LIMITED	12.10	0.39
Sikkim	11.60	0.37
SKS Power Generation Chhattisgarh Limited	11.01	0.35
D B Power Limited	10.56	0.34
Palatana Plant	10.12	0.32
NTPC Vindhyachal Stage IV	9.88	0.32
NLC Tamilnadu Power Limited	9.59	0.31
NTPC Vindhyachal Stage III	9.40	0.30

NTPC Korba Stage I &II	9.37	0.30
RENEW SURYA OJAS PRIVATE LIMITED-Wind	9.09	0.29
NTPC Farakka stage III	9.05	0.29
Jindal Power Limited, Stage-1	8.92	0.29
NTPC Kahalgaon stage I	8.78	0.28
Government of Himachal Pradesh_NJHPS	8.64	0.28
Meghalaya	8.49	0.27
Damodar Valley Corporation	8.42	0.27
Rajasthan	7.82	0.25
NTPC Vindhyachal Stage I	7.74	0.25
Serentica Renewables India 5 Private Limited- Infirm	7.71	0.25
ReNew Surya Ravi Private Limited	7.67	0.24
NTPC Vindhyachal Stage II	7.57	0.24
Tripura	7.47	0.24
Adept Renewable Technologies Private Limited	7.40	0.24
Transition Green Energy Private Limited	7.23	0.23
MB POWER (MADHYA PRADESH) LIMITED	7.03	0.22
Adani Green Energy Twenty Five B Limited_infirm	6.92	0.22
NTPC Sipat Stage II	6.89	0.22
NLC INDIA LIMITED THERMAL POWER STATION I EXPANSION	6.81	0.22
Amp Energy Green Six Private Limited	6.78	0.22
MAITHON POWER LIMITED	6.53	0.21
NTPC Gadarwara	6.45	0.21
SEIL Energy India Limited Project II	6.36	0.20
NTPC khargone	6.31	0.20
NTPP BRBCL	5.72	0.18
Nagaland	5.71	0.18
NLC INDIA LIMITED THERMAL POWER STATION II STAGE II	5.69	0.18
NTPC Telangana	5.27	0.17
Sasan Power Limited	5.15	0.16
KARCHAM WANGTOO HYDRO ELECTRIC PLANT.	5.05	0.16
NTPC Talcher Stage I	4.94	0.16
NTPC North Karanpura STPS	4.79	0.15
Kerala	4.67	0.15
The Tata Power Co Ltd (MTPS)	4.66	0.15
JUNIPER GREEN COSMIC PRIVATE LIMITED	4.62	0.15
NTPC Vindhyachal Stage V	4.60	0.15
NTPC Lara Stage I	4.58	0.15
VENA ENERGY VIDYUTH PRIVATE LIMITED_INFIRM	4.55	0.15
IND BARATH ENERGY UTKAL LIMITED	4.55	0.15
NTPC Darlipali	4.43	0.14
Government of Himachal Pradesh_Koldam HEP	4.42	0.14
NTPC Rihand stage III	4.41	0.14
NREL-Dayapar Wind	4.38	0.14
NLC INDIA LIMITED THERMAL POWER STATION II STAGE I	4.31	0.14
Transition Energy Services Private Limited	4.27	0.14
NTPC Rihand stage I	4.25	0.14
Bongaigaon Thermal Power Station NTPC	4.14	0.13
ADANI RENEWABLE ENERGY FORTY ONE LIMITED_infirm	4.08	0.13
NTPC KUDGI	4.06	0.13
NTPC Rihand stage II	3.98	0.13
Serentica Renewables India 5 Private Limited	3.89	0.12
ADANI WIND ENERGY KUTCHH FOUR Ltd. Nakhatrana	3.66	0.12
Jhabua Power Limited	3.58	0.11
ADHUNIK POWER & NATURAL RESOURCES LIMITED	3.48	0.11
Jindal Steel & Power Ltd , DCP	3.32	0.11
Onevolt Energy Private Limited	3.01	0.10

NTPC Korba Stage III	2.96	0.09
SIMHAPURI ENERGY LIMITED	2.91	0.09
Jaypee Nigrie Super Thermal Power Plant	2.83	0.09
VENA ENERGY VIDYUTH PRIVATE LIMITED_SOLAR_INFIRM	2.82	0.09
ACB (INDIA) LIMITED	2.79	0.09
ACME PHALODI SOLAR ENERGY PRIVATE LIMITED_INFIRM	2.78	0.09
TRANSITION SUSTAINABLE ENERGY SERVICES ONE PRIVATE LIMITED-Infirm	2.67	0.09
NTPC Ramagundam Stage I &II	2.66	0.09
NTPC BARH Stage I	2.60	0.08
Government of Himachal Pradesh_RampurHEP	2.52	0.08
Grian Energy Private Limited	2.51	0.08
NTPC Unchahar Stage IV	2.43	0.08
Sorang HEP (Himachal Sorang Power Pvt. Ltd.)	2.42	0.08
R.K.M POWERGEN PRIVATE LIMITED	2.41	0.08
SEMBCORP GREEN INFRA PRIVATE LIMITED (INFIRM)	2.39	0.08
ADANI SOLAR ENERGY RJ TWO PRIVATE LIMITED	2.18	0.07
NTPC Solapur	2.16	0.07
NTPC Simhadri Stage II	2.04	0.07
Goa WR	2.01	0.06
IGSTPS JHAJJAR	2.00	0.06
ADANI GREEN ENERGY TWENTY FIVE LIMITED_infirm	1.97	0.06
Sainj HEP	1.95	0.06
NTPC Unchahar Stage II	1.91	0.06
Amplus Ages Private Limited	1.87	0.06
OSTRO KANNADA POWER PRIVATE LIMITED	1.83	0.06
NLC INDIA LIMITED THERMAL POWER STATION II EXPANSION	1.77	0.06
JUNIPER GREEN COSMIC PRIVATE LIMITED_INFIRM	1.74	0.06
TPSL Banderwala SECI 100_INF	1.73	0.06
Serentica Renewables India 1 Private Limited	1.68	0.05
NTPC Mouda Stage I	1.65	0.05
KANTI BIJLEE UTPADAN NIGAM LIMITED	1.62	0.05
Government of Himachal Pradesh _Chamera1HEP	1.58	0.05
Singoli Bhatwari HEP	1.44	0.05
Government of Himachal Pradesh_ CHAMERA2HEP	1.43	0.05
ADANI RENEWABLE ENERGY FIFTY FIVE LIMITED_Infirm	1.36	0.04
DGEN MEGA POWER PROJECT	1.33	0.04
ADANI SOLAR ENERGY JAISALMER TWO PRIVATE LIMITED(Project-2)	1.30	0.04
Dhariwal ISTS	1.25	0.04
Government of Himachal Pradesh _Chamera3HEP	1.24	0.04
SHREE CEMENT LIMITED TPS	1.15	0.04
AD HYDRO POWER LIMITED	1.14	0.04
IL&FS TAMIL NADU POWER COMPANY LIMITED	1.11	0.04
ASSAM GAS BASED POWER STATION	1.09	0.03
ACME RAISAR SOLAR ENERGY PRIVATE LIMITED_INFIRM	1.06	0.03
NTPC Mouda Stage II	1.00	0.03
NTPC Unchahar Stage I	0.99	0.03
NTPC Dadri Stage I	0.95	0.03
Jindal India Thermal Power Limited	0.94	0.03
NTPC Simhadri Stage I	0.86	0.03
Daman and Diu - Dadra and Nagar Haveli	0.83	0.03
NTPC Dadri Stage II	0.81	0.03
Chandigarh (UT)	0.80	0.03
GMR Warora Energy Limited	0.76	0.02
NTPC Ramagundam Stage III	0.74	0.02
Government of Himachal Pradesh_Parbat3HEP	0.72	0.02

Budhil HEP (Greenko Budhil Hydro Power Pvt. Ltd.)	0.71	0.02
Chuzachen HEP	0.65	0.02
RENEW SURYA ROSHNI PRIVATE LIMITED Koppal PS	0.65	0.02
Government of Himachal Pradesh_BairasuilHEP	0.56	0.02
TPSL 200MW TPTCL Banderwala	0.52	0.02
Ramagundam Floating solar	0.47	0.02
ADANI SOLAR ENERGY JODHPUR TWO LIMITED	0.45	0.01
Tashiding HEP, Shiga Energy Private Limited	0.44	0.01
JORETHANG LOOP HEP, DANS ENERGY PRIVATE LIMITED	0.42	0.01
RENEW SURYA OJAS PRIVATE LIMITED_INFIRM	0.39	0.01
Serentica Renewables India 4 Private Limited	0.39	0.01
NTPC Unchahar Stage III	0.36	0.01
GMR KAMALANGA ENERGY LTD-CTU	0.35	0.011
AGARTALA GAS BASED POWER STATION	0.31	0.010
Ayana Renewable Power Three Private Limited Infirm	0.30	0.010
Maruti Clean Coal and Power Limited	0.30	0.010
NTECL VALLUR	0.25	0.008
Basochhu Hydropower Plant Bhutan	0.24	0.008
Nikachhu Hydropower Project	0.18	0.006
COASTAL ENERGEN PRIVATE LIMITED	0.09	0.003
Mizoram	0.08	0.003
Simhadri FSP 15 MW	0.07	0.002
Nani Virani Wind Energy Private Limited	0.07	0.002
Adani Green Energy Twenty Six B Limited_infirm	0.05	0.001
RENEW SURYA ROSHNI PRIVATE LIMITED-Fatehgarh-III PS	0.04	0.001
NTPC SAIL POWER COMPANY LIMITED	0.04	0.001
Ratnagiri Gas & Power Private Limited	0.04	0.001
Goa SR	0.04	0.001
ADANI GREEN ENERGY TWENTY SIX A LIMITED_infirm	0.04	0.001
Simhadri Floating solar (10 MW)	0.02	0.001
Total	3130.48	100.00
Volume sold by top 5 Regional Entities	1174.76	37.53
Herfindahl-Hirschman Index		0.0416

Source: NLDC

Table-27: VOLUME OF ELECTRICITY PURCHASED IN REAL TIME MARKET THROUGH POWER EXCHANGES, OCTOBER 2024

Name of the Entity	Volume of Purchase (MUs)	% of Volume
Punjab	575.10	18.37
Telangana	376.01	12.01
Maharashtra	373.02	11.92
Rajasthan	228.94	7.31
Uttar Pradesh	219.60	7.01
Jammu Kashmir	190.44	6.08
West Bengal	144.64	4.62
Tamil Nadu	129.52	4.14
Delhi	104.28	3.33
Gujarat	99.86	3.19
Andhra Pradesh	95.98	3.07
Damodar Valley Corporation	64.48	2.06
Assam	60.29	1.93
Odisha	51.66	1.65
Himachal Pradesh	47.78	1.53
Uttarakhand	47.55	1.52
Haryana	40.07	1.28
Daman and Diu - Dadra and Nagar Haveli	35.36	1.13
Chhattisgarh	33.75	1.08
Kerala	31.76	1.01
SKS Power Generation Chhattisgarh Limited	23.20	0.74
ArcelorMittal Nippon Steel India Limited	19.50	0.62
Tripura	17.57	0.56
Madhya Pradesh	16.92	0.54
Karnataka	14.19	0.45
Jharkhand	12.36	0.39
Jindal Power Limited, Stage-2	12.31	0.39
Meghalaya	9.65	0.31
Adani Power Limited - Raigarh TPP	8.07	0.26
Bihar	4.52	0.14
Goa WR	3.91	0.12
Government of Himachal Pradesh_NJHPS	3.79	0.12
Jindal Power Limited, Stage-1	3.74	0.12
Jhabua Power Limited	3.62	0.12
MEENAKSHI ENERGY LIMITED	3.20	0.10
Goa SR	2.99	0.10
North Central Railway Prayagraj	2.96	0.09
MB POWER (MADHYA PRADESH) LIMITED	2.93	0.09
Government of Himachal Pradesh_ CHAMERA2HEP	2.32	0.07
Ratnagiri Gas & Power Private Limited	1.99	0.06
Government of Himachal Pradesh_Koldam HEP	1.84	0.06
Manipur	1.51	0.05
Jindal Steel & Power Ltd , DCPD	1.47	0.05
Government of Himachal Pradesh_RampurHEP	1.10	0.04
Government of Himachal Pradesh _ Chamera3HEP	0.81	0.03
Kawas	0.80	0.03
NTPC Jhanor Gandhar GPS	0.77	0.02
SIMHAPURI ENERGY LIMITED	0.49	0.02

Government of Himachal Pradesh_Parbat3HEP	0.45	0.01
ACB (INDIA) LIMITED	0.33	0.01
Government of Himachal Pradesh_BairasuilHEP	0.27	0.01
Government of Himachal Pradesh _ Chamera1HEP	0.23	0.01
Pondicherry UT	0.23	0.01
Sainj HEP	0.18	0.01
Sikkim	0.12	0.004
Maruti Clean Coal and Power Limited	0.08	0.002
2X600 VEDANTA LIMITED Chhattisgarh Power Plant	0.01	0.0003
TOTAL	3130.48	100.00
Volume purchased by top 5 Regional Entities	1772.66	56.63
Herfindahl-Hirschman Index		0.0855

Source: NLDC

Table-28: TOTAL VOLUME OF NET SHORT-TERM TRANSACTIONS (REGIONAL ENTITY-WISE), OCTOBER 2024

S. No.	Name of the Entity	Total volume of net short-term transactions of electricity*
1	Maharashtra	1656.27
2	Gujarat	1393.85
3	Rajasthan	1274.01
4	Punjab	762.81
5	Delhi	619.50
6	Tamil Nadu	595.63
7	Telangana	526.10
8	Andhra Pradesh	502.52
9	Jammu Kashmir	413.36
10	Uttarakhand	341.65
11	Uttar Pradesh	331.58
12	Kerala	271.08
13	Chhattisgarh	251.34
14	Daman and Diu - Dadra and Nagar Haveli	247.62
15	ArcelorMittal Nippon Steel India Limited	244.00
16	West Bengal	240.79
17	HIMACHAL PRADESH	94.57
18	Damodar Valley Corporation	78.36
19	BHARAT ALUMINIUM COMPANY LTD (Bulk Consumer)	58.75
20	Goa WR	55.42
21	North Central Railway Prayagraj	33.51
22	Goa SR	15.39
23	Tripura	13.83
24	Jharkhand	0.85
25	NTPC Jhanor Gandhar GPS	0.58
26	Kawas	0.33
27	2X600 VEDANTA LIMITED Chhattisgarh Power Plant	0.01
28	ANTA	-0.01
29	NTPC SAIL POWER COMPANY LIMITED	-0.04
30	RENEW SURYA ROSHNI PRIVATE LIMITED-Fatehgarh-III PS	-0.04
31	NTECL VALLUR	-0.25
32	AGARTALA GAS BASED POWER STATION	-0.31
33	Serentica Renewables India 4 Private Limited	-0.39
34	NTPC Unchahar Stage III	-0.42
35	Tashiding HEP, Shiga Energy Private Limited	-0.44
36	JORETHANG LOOP HEP, DANS ENERGY PRIVATE LIMITED	-0.44
37	ADANI SOLAR ENERGY RJ TWO PRIVATE LIMITED (infir)	-0.48
38	RENEW SURYA OJAS PRIVATE LIMITED_INFIRM	-0.55
39	ADANI GREEN ENERGY TWENTY SIX A LIMITED_infir	-0.60
40	DADRI	-0.63
41	RENEW SURYA ROSHNI PRIVATE LIMITED Koppal PS	-0.65
42	Chuzachen HEP	-0.69
43	NTPC Simhadri Stage I	-0.86
44	NTPC Dadri Stage II	-0.87
45	Simhadri Floating solar (10 MW)	-0.93
46	NTPC Ramagundam Stage III	-0.94
47	NTPC Mouda Stage II	-1.03
48	ASSAM GAS BASED POWER STATION	-1.09
49	NTPC Unchahar Stage I	-1.23
50	Simhadri FSP 15 MW	-1.51
51	GMR KAMALANGA ENERGY LTD-CTU	-1.61
52	NTPC SOLAPUR SOLAR PV Station	-1.63
53	NTPC Mouda Stage I	-1.68
54	Nani Virani Wind Energy Private Limited	-1.72
55	NLC INDIA LIMITED THERMAL POWER STATION II EXPANSION	-1.77
56	CONTINUUM POWER TRADING (TN) PRIVATE LIMITED	-2.01
57	NTPC Unchahar Stage II	-2.06

58	ACME RAISAR SOLAR ENERGY PRIVATE LIMITED_INFIRM	-2.07
59	NTPC Solapur	-2.43
60	Amplus Ages Private Limited	-2.63
61	TRANSITION SUSTAINABLE ENERGY SERVICES ONE PRIVATE LIMITED-Infirm	-2.67
62	NTPC Ramagundam Stage I &II	-2.73
63	NTPC Dadri Stage I	-2.75
64	Budhil HEP (Greenko Budhil Hydro Power Pvt. Ltd.)	-2.88
65	IRCON RENEWABLE POWER LIMITED	-3.04
66	NTPC Unchahar Stage IV	-3.04
67	Government of Himachal Pradesh_BairasuilHEP	-3.27
68	ADHUNIK POWER & NATURAL RESOURCES LIMITED	-3.48
69	Ratnagiri Gas & Power Private Limited	-3.51
70	ADANI WIND ENERGY KUTCHH FOUR Ltd. Nakhatrana (infirm)	-3.57
71	JSW RENEW ENERGY LIMITED INFIRM	-4.03
72	NLC INDIA LIMITED THERMAL POWER STATION II STAGE I	-4.31
73	DHARIWAL STU OTH	-4.32
74	NREL-Dayapar Wind	-4.38
75	NTPC Rihand stage I	-4.41
76	Government of Himachal Pradesh_Parbat3HEP	-4.42
77	NTPC Korba Stage III	-4.58
78	NTPC Darlipali	-4.73
79	SEMBCORP GREEN INFRA PRIVATE LIMITED (INFIRM)	-4.78
80	NTPC Rihand stage II	-4.79
81	NTPC KUDGI	-4.90
82	VENA ENERGY VIDYUTH PRIVATE LIMITED_SOLAR_INFIRM	-5.10
83	Sasan Power Limited	-5.15
84	NTPC Rihand stage III	-5.23
85	NTPC Vindhyaachal Stage V	-5.26
86	WIND FIVE RENERGY LIMITED	-5.27
87	Dudhkunda Khola Hydropower Project	-5.54
88	NLC INDIA LIMITED THERMAL POWER STATION II STAGE II	-5.69
89	NTPC Telangana	-5.75
90	NTPC Lara Stage I	-6.02
91	JUNIPER GREEN COSMIC PRIVATE LIMITED_INFIRM	-6.07
92	Onevolt Energy Private Limited	-6.49
93	NTPC Simhadri Stage II	-6.50
94	Grian Energy Private Limited	-6.52
95	MAITHON POWER LIMITED	-6.53
96	Government of Himachal Pradesh _ Chamera3HEP	-6.81
97	Modi Khola Hydropower Project	-6.87
98	MAYA KHOLA HYDRO POWER PROJECT	-6.89
99	NLC INDIA LIMITED THERMAL POWER STATION I EXPANSION	-6.91
100	NTPC khargone	-6.92
101	ADANI SOLAR ENERGY JODHPUR TWO LIMITED	-6.96
102	NTPC BARH Stage I	-6.98
103	NTPC Gadarwara	-7.18
104	Chandigarh (UT)	-7.29
105	The Tata Power Co Ltd (MTPS)	-7.43
106	Government of Himachal Pradesh_ CHAMERA2HEP	-7.92
107	Serentica Renewables India 5 Private Limited	-8.36
108	Government of Himachal Pradesh _ Chamera1HEP	-8.50
109	NTPC Vindhyaachal Stage II	-8.80
110	NEA Nepal Solu Khola (Dudhkoshi) Hydropower Project	-9.15
111	NTPC Sipat Stage II	-9.19
112	Bongaigaon Thermal Power Station NTPC	-9.30
113	IRCON RENEWABLE POWER LIMITED Infirm	-9.72
114	NTPP BRBCL	-9.78
115	NLC Tamilnadu Power Limited	-9.80
116	Ayana Renewable Power Three Private Limited Infirm	-10.01
117	VENA ENERGY VIDYUTH PRIVATE LIMITED_INFIRM	-11.17
118	NTPC Vindhyaachal Stage III	-11.65
119	NTPC Kahalgaon stage I	-11.66

120	NTPC Vindhyachal Stage IV	-12.14
121	NLC INDIA LIMITED NEYVELI NEW THERMAL POWER STATION	-12.19
122	NTPC Vindhyachal Stage I	-12.26
123	AMBUJA CEMENTS LIMITED(Khavda PSS-3)_infirm	-12.50
124	Serentica Renewables India 5 Private Limited- Infirm	-12.81
125	JUNIPER GREEN COSMIC PRIVATE LIMITED	-13.14
126	OSTRO KANNADA POWER PRIVATE LIMITED	-13.64
127	NTPC Korba Stage I &II	-13.73
128	NTPC Farakka stage III	-13.82
129	Sainj HEP	-13.90
130	NTPC Singrauli	-14.21
131	Nagaland	-14.51
132	Nikachhu Hydropower Project	-14.73
133	ACME PHALODI SOLAR ENERGY PRIVATE LIMITED_INFIRM	-16.19
134	Transition Energy Services Private Limited	-16.51
135	Dhariwal ISTS	-16.67
136	Adani Green Energy Twenty Five A Limited_Infirm	-16.68
137	Pondicherry UT	-16.73
138	ADANI SOLAR ENERGY JAISALMER TWO PRIVATE LIMITED(Project-2)	-17.57
139	Government of Himachal Pradesh_RampurHEP	-17.66
140	Ramagundam Floating solar	-17.97
141	NEA - Bihar STU	-18.03
142	Haryana	-18.36
143	Maruti Clean Coal and Power Limited	-18.44
144	NTPC Tanda Stage II	-19.59
145	NTPC North Karanpura STPS	-19.88
146	COASTAL ENERGEN PRIVATE LIMITED	-19.99
147	TPSL Banderwala SECI 100_INF	-20.37
148	Mizoram	-20.57
149	Adani Green Energy Twenty Six B Limited_infirm	-22.12
150	NTPC BARH Stage II	-22.17
151	TPSL 200MW TPTCL Banderwala	-22.32
152	Amp Energy Green Six Private Limited	-22.89
153	Transition Green Energy Private Limited	-23.03
154	Palatana Plant	-23.75
155	NTPC Sipat Stage I	-23.81
156	NTPC Kahalgaon stage II	-23.82
157	Sorang HEP (Himachal Sorang Power Pvt. Ltd.))	-24.21
158	Adept Renewable Technologies Private Limited	-24.71
159	Government of Himachal Pradesh_Koldam HEP	-24.82
160	KANTI BIJLEE UTPADAN NIGAM LIMITED	-25.83
161	GMR Warora Energy Limited	-27.11
162	Serentica Renewables India 1 Private Limited	-27.42
163	DGEN MEGA POWER PROJECT	-28.48
164	ADANI RENEWABLE ENERGY FIFTY FIVE LIMITED_Infirm	-28.66
165	SEIL Energy India Limited Project II	-29.25
166	Manipur	-30.79
167	NTPC Talcher Stage I	-31.25
168	TRN ENERGY PRIVATE LIMITED	-31.49
169	ADANI WIND ENERGY KUTCHH FOUR Ltd. Nakhatrana	-31.73
170	RENEW SURYA OJAS PRIVATE LIMITED-Wind	-32.44
171	AD HYDRO POWER LIMITED	-35.13
172	Singoli Bhatwari HEP	-35.62
173	Basochhu Hydropower Plant Bhutan	-36.07
174	ADANI RENEWABLE ENERGY FORTY ONE LIMITED_infirm	-36.71
175	SEMBCORP ENERGY INDIA LIMITED	-36.93
176	Sikkim	-37.40
177	NTPC Talcher Super Thermal Power Station Stage II	-38.96
178	RENEW SURYA PRATAP PRIVATE LIMITED	-40.68
179	MEENAKSHI ENERGY LIMITED	-41.15
180	ADANI SOLAR ENERGY RJ TWO PRIVATE LIMITED	-42.21

181	NEPAL ELECTRICITY AUTHORITY TANAKPUR	-42.42
182	Sembcorp Energy India Limited Project II	-45.43
183	ReNew Surya Ravi Private Limited	-47.37
184	ADANI GREEN ENERGY TWENTY FIVE LIMITED_infirm	-51.98
185	KARCHAM WANGTOO HYDRO ELECTRIC PLANT.	-52.22
186	NABINAGAR POWER GENERATING COMPANY LIMITED	-56.51
187	BHARAT ALUMINIUM COMPANY LTD	-57.35
188	Government of Himachal Pradesh_NJHPS	-59.36
189	Arunachal Pradesh	-68.00
190	NTPC Farakka stage I	-68.47
191	Meghalaya	-69.44
192	NEPAL ELECTRICITY AUTHORITY MUZAFFARPUR	-74.94
193	Jhabua Power Limited	-79.78
194	Jindal Steel & Power Ltd , DCPD	-79.92
195	R.K.M POWERGEN PRIVATE LIMITED	-84.25
196	IGSTPS JHAJJAR	-104.84
197	Adani Green Energy Twenty Five B Limited_infirm	-105.83
198	ACB (INDIA) LIMITED	-109.99
199	KAMENG HYDRO POWER STATION	-121.28
200	SHREE CEMENT LIMITED TPS	-136.39
201	SEIL ENERGY INDIA LIMITED	-142.78
202	D B Power Limited	-159.28
203	MB POWER (MADHYA PRADESH) LIMITED	-162.65
204	DHARIWAL STU MH	-170.03
205	IND BARATH ENERGY UTKAL LIMITED	-177.59
206	ADANI RENEWABLE ENERGY HOLDING FOUR LIMITED	-191.47
207	SIMHAPURI ENERGY LIMITED	-208.93
208	SKS Power Generation Chhattisgarh Limited	-223.71
209	Assam	-256.92
210	Jindal Power Limited, Stage-1	-263.99
211	Adani Power Limited - Raigarh TPP	-285.56
212	Bihar	-288.05
213	MAHAN ENERGEN LIMITED U#1	-297.71
214	Jaypee Nigrie Super Thermal Power Plant	-319.79
215	MAHAN ENERGEN LIMITED U#2	-325.33
216	IL&FS TAMIL NADU POWER COMPANY LIMITED	-342.09
217	Odisha	-364.26
218	Jindal India Thermal Power Limited	-379.19
219	Karnataka	-416.34
220	Madhya Pradesh	-464.23
221	Adani Power Limited-Raipur TPP	-581.96
222	Jindal Power Limited, Stage-2	-657.31
* Total volume of net short-term transactions of electricity includes net of transactions of electricity through bilateral and power exchanges		
(-) indicates sale and (+) indicates purchase		

Source: NLDC

Table-29: DETAILS OF CONGESTION IN POWER EXCHANGES, OCTOBER 2024

	Details of Congestion	Day Ahead Market			Green Day Ahead Market			High Price Day Ahead Market			Real Time Market		
		IEX	PXIL	HPX	IEX	PXIL	HPX	IEX	PXIL	HPX	IEX	PXIL	HPX
1	Unconstrained Cleared Volume (MU)	4419.86	0.00	0.00	822.53	0.00	0.00	0.00	0.00	0.00	3122.66	6.75	1.08
2	Actual Cleared Volume and hence scheduled (MU)	4419.86	0.00	0.00	822.53	0.00	0.00	0.00	0.00	0.00	3122.66	6.75	1.08
3	Volume of electricity that could not be cleared and hence not scheduled because of congestion (MU) *	0.00	0.00	0.00	0.00	0.00	0.00	0.00	0.00	0.00	0.00	0.00	0.00
4	Volume of electricity that could not be cleared and hence not scheduled because of reasons other than congestion (MU)	0.00	0.00	0.00	0.00	0.00	0.00	0.00	0.00	0.00	0.00	0.00	0.00
5	Volume of electricity that could not be cleared as % to Unconstrained Cleared Volume	0.00%	0.00%	0.00%	0.00%	0.00%	0.00%	0.00%	0.00%	0.00%	0.00%	0.00%	0.00%
6	Percentage of the time congestion occurred during the month (Number of hours congestion occurred/ Total number of hours in the month)	0.00%	0.00%	0.00%	0.00%	0.00%	0.00%	0.00%	0.00%	0.00%	0.00%	0.00%	0.00%
7	Congestion occurrence (%) time block wise												
	0.00 - 6.00 hours	0.00%	0.00%	0.00%	0.00%	0.00%	0.00%	0.00%	0.00%	0.00%	0.00%	0.00%	0.00%
	6.00 - 12.00 hours	0.00%	0.00%	0.00%	0.00%	0.00%	0.00%	0.00%	0.00%	0.00%	0.00%	0.00%	0.00%
	12.00 - 18.00 hours	0.00%	0.00%	0.00%	0.00%	0.00%	0.00%	0.00%	0.00%	0.00%	0.00%	0.00%	0.00%
	18.00 - 24.00 hours	0.00%	0.00%	0.00%	0.00%	0.00%	0.00%	0.00%	0.00%	0.00%	0.00%	0.00%	0.00%

* This power would have been scheduled had there been no congestion

Source: IEX, PXIL, HPX & NLDC

Table-30: VOLUME OF SHORT TERM TRANSACTIONS OF ELECTRICITY (DAY-WISE) (MU), OCTOBER 2024

Date	Bilateral [^] (Traders, PX, Direct)	Day Ahead Market [#]			Green Day Ahead Market [#]			High Price DAM [#]			Real Time Market [#]			Total Electricity Generation (MU)*
		IEX	PXIL	HPX	IEX	PXIL	HPX	IEX	PXIL	HPX	IEX	PXIL	HPX	
1-Oct-24	180.53	171.00	0.00	0.00	19.61	0.00	0.00	0.00	0.00	0.00	104.21	2.36	0.00	4669.23
2-Oct-24	164.23	172.47	0.00	0.00	24.33	0.00	0.00	0.00	0.00	0.00	124.99	0.45	0.00	4492.86
3-Oct-24	197.93	159.68	0.00	0.00	23.59	0.00	0.00	0.00	0.00	0.00	107.48	0.72	0.05	4540.27
4-Oct-24	195.39	154.73	0.00	0.00	28.45	0.00	0.00	0.00	0.00	0.00	106.68	0.01	0.20	4614.66
5-Oct-24	199.49	138.60	0.00	0.00	26.12	0.00	0.00	0.00	0.00	0.00	112.69	1.79	0.08	4651.62
6-Oct-24	187.22	148.34	0.00	0.00	27.63	0.00	0.00	0.00	0.00	0.00	102.83	0.00	0.00	4448.17
7-Oct-24	214.23	126.74	0.00	0.00	24.55	0.00	0.00	0.00	0.00	0.00	85.87	0.30	0.60	4600.24
8-Oct-24	221.33	123.44	0.00	0.00	24.67	0.00	0.00	0.00	0.00	0.00	90.50	0.02	0.15	4684.82
9-Oct-24	218.15	127.58	0.00	0.00	26.89	0.00	0.00	0.00	0.00	0.00	93.45	0.05	0.00	4659.11
10-Oct-24	198.27	146.63	0.00	0.00	23.53	0.00	0.00	0.00	0.00	0.00	87.60	0.00	0.00	4491.65
11-Oct-24	183.71	149.19	0.00	0.00	26.51	0.00	0.00	0.00	0.00	0.00	85.56	0.00	0.00	4329.66
12-Oct-24	120.06	116.03	0.00	0.00	27.59	0.00	0.00	0.00	0.00	0.00	119.16	0.00	0.00	4025.64
13-Oct-24	103.70	123.23	0.00	0.00	29.88	0.00	0.00	0.00	0.00	0.00	111.27	0.00	0.00	4011.71
14-Oct-24	146.19	139.05	0.00	0.00	22.58	0.00	0.00	0.00	0.00	0.00	91.74	0.00	0.00	4342.91
15-Oct-24	138.12	155.64	0.00	0.00	27.68	0.00	0.00	0.00	0.00	0.00	98.13	0.00	0.00	4318.29
16-Oct-24	149.93	146.46	0.00	0.00	25.92	0.00	0.00	0.00	0.00	0.00	110.60	0.00	0.00	4279.57
17-Oct-24	166.64	148.08	0.00	0.00	26.43	0.00	0.00	0.00	0.00	0.00	106.70	0.00	0.00	4238.17
18-Oct-24	162.80	147.20	0.00	0.00	25.07	0.00	0.00	0.00	0.00	0.00	119.73	0.13	0.00	4314.40
19-Oct-24	165.10	152.25	0.00	0.00	28.86	0.00	0.00	0.00	0.00	0.00	105.21	0.00	0.00	4325.03
20-Oct-24	152.89	131.67	0.00	0.00	26.44	0.00	0.00	0.00	0.00	0.00	99.07	0.00	0.00	4112.01
21-Oct-24	165.95	144.59	0.00	0.00	28.24	0.00	0.00	0.00	0.00	0.00	98.81	0.03	0.00	4245.02
22-Oct-24	171.05	145.76	0.00	0.00	29.86	0.00	0.00	0.00	0.00	0.00	87.10	0.00	0.00	4286.26
23-Oct-24	173.38	143.36	0.00	0.00	29.90	0.00	0.00	0.00	0.00	0.00	93.01	0.10	0.00	4264.77
24-Oct-24	177.42	144.31	0.00	0.00	28.79	0.00	0.00	0.00	0.00	0.00	89.74	0.00	0.00	4195.15
25-Oct-24	171.17	155.98	0.00	0.00	27.89	0.00	0.00	0.00	0.00	0.00	94.63	0.00	0.00	4113.99
26-Oct-24	170.24	146.66	0.00	0.00	29.36	0.00	0.00	0.00	0.00	0.00	104.12	0.00	0.00	4096.34
27-Oct-24	155.88	120.47	0.00	0.00	28.18	0.00	0.00	0.00	0.00	0.00	106.12	0.00	0.00	4020.71
28-Oct-24	170.92	133.47	0.00	0.00	29.57	0.00	0.00	0.00	0.00	0.00	95.55	0.00	0.00	4273.36
29-Oct-24	174.80	129.09	0.00	0.00	28.56	0.00	0.00	0.00	0.00	0.00	96.22	0.74	0.00	4377.11
30-Oct-24	179.72	147.97	0.00	0.00	23.76	0.00	0.00	0.00	0.00	0.00	84.41	0.05	0.00	4334.14
31-Oct-24	121.31	130.20	0.00	0.00	22.09	0.00	0.00	0.00	0.00	0.00	109.46	0.00	0.00	3867.60
Total	5297.75	4419.86	0.00	0.00	822.53	0.00	0.00	0.00	0.00	0.00	3122.66	6.75	1.08	134224.47

Source: NLDC

[^] includes bilateral short-term transactions under GNA and T-GNA

* As available on CEA Website. Gross Electricity Generation excluding electricity generation from renewables and captive power plants.

[#] Scheduled volume of all the bid areas.

Note: Volume here has been finalised in consultation with Grid India, after resolving issues that emerged post implementation of GNA Regulations and transition to new WBES software by Grid India.

Table-31(a): PRICE OF DAY AHEAD TRANSACTIONS OF ELECTRICITY (DAY-WISE) (₹/kWh), OCTOBER 2024

Market Segment	Day Ahead Market of IEX			Day Ahead Market of PXIL			Day Ahead Market of HPX		
	Date	Minimum ACP	Maximum ACP	Weighted Average Price*	Minimum ACP	Maximum ACP	Weighted Average Price*	Minimum ACP	Maximum ACP
1-Oct-24	2.88	10.00	5.09	-	-	-	-	-	-
2-Oct-24	1.60	10.00	5.56	-	-	-	-	-	-
3-Oct-24	2.17	10.00	4.98	-	-	-	-	-	-
4-Oct-24	2.07	10.00	5.02	-	-	-	-	-	-
5-Oct-24	1.99	10.00	4.54	-	-	-	-	-	-
6-Oct-24	0.70	7.40	3.76	-	-	-	-	-	-
7-Oct-24	2.06	10.00	4.68	-	-	-	-	-	-
8-Oct-24	2.75	10.00	5.10	-	-	-	-	-	-
9-Oct-24	2.95	10.00	5.27	-	-	-	-	-	-
10-Oct-24	2.75	10.00	5.37	-	-	-	-	-	-
11-Oct-24	1.99	10.00	3.89	-	-	-	-	-	-
12-Oct-24	0.60	4.50	2.88	-	-	-	-	-	-
13-Oct-24	0.50	4.27	2.59	-	-	-	-	-	-
14-Oct-24	2.11	5.65	3.25	-	-	-	-	-	-
15-Oct-24	2.57	6.10	3.59	-	-	-	-	-	-
16-Oct-24	2.38	10.00	3.78	-	-	-	-	-	-
17-Oct-24	2.10	10.00	4.35	-	-	-	-	-	-
18-Oct-24	2.22	10.00	4.08	-	-	-	-	-	-
19-Oct-24	2.00	10.00	3.97	-	-	-	-	-	-
20-Oct-24	1.20	4.78	3.19	-	-	-	-	-	-
21-Oct-24	2.02	10.00	3.83	-	-	-	-	-	-
22-Oct-24	2.00	10.00	3.79	-	-	-	-	-	-
23-Oct-24	1.96	10.00	3.66	-	-	-	-	-	-
24-Oct-24	1.50	10.00	3.50	-	-	-	-	-	-
25-Oct-24	1.10	10.00	3.40	-	-	-	-	-	-
26-Oct-24	1.50	9.68	3.64	-	-	-	-	-	-
27-Oct-24	0.50	4.20	2.59	-	-	-	-	-	-
28-Oct-24	1.50	9.57	3.46	-	-	-	-	-	-
29-Oct-24	1.70	10.00	3.74	-	-	-	-	-	-
30-Oct-24	2.00	10.00	4.19	-	-	-	-	-	-
31-Oct-24	0.50	6.00	3.07	-	-	-	-	-	-
	0.50[#]	10.00[#]	4.03	-	-	-	-	-	-

Source: IEX, PXIL and HPX

* Weighted average price computed based on Area Clearing Volume (ACV) and Area Clearing Price (ACP) for each hour of the day. Here, ACV and ACP represent the scheduled volume and weighted average price of all the bid areas of power exchanges.

Maximum/Minimum in the month

**Table-31(b): PRICE OF GREEN DAY AHEAD TRANSACTIONS OF ELECTRICITY (DAY-WISE) (₹/kWh),
OCTOBER 2024**

Market Segment	Green Day Ahead Market of IEX			Green Day Ahead Market of PXIL			Green Day Ahead Market of HPX		
Date	Minimum ACP	Maximum ACP	Weighted Average Price*	Minimum ACP	Maximum ACP	Weighted Average Price*	Minimum ACP	Maximum ACP	Weighted Average Price*
1-Oct-24	2.89	10.00	4.47	-	-	-	-	-	-
2-Oct-24	2.90	10.00	4.76	-	-	-	-	-	-
3-Oct-24	2.24	10.00	4.30	-	-	-	-	-	-
4-Oct-24	2.74	10.00	4.17	-	-	-	-	-	-
5-Oct-24	2.77	10.00	4.12	-	-	-	-	-	-
6-Oct-24	1.70	10.00	3.80	-	-	-	-	-	-
7-Oct-24	2.70	10.00	4.26	-	-	-	-	-	-
8-Oct-24	2.80	10.00	4.14	-	-	-	-	-	-
9-Oct-24	2.85	10.00	4.09	-	-	-	-	-	-
10-Oct-24	3.00	10.00	4.39	-	-	-	-	-	-
11-Oct-24	3.00	10.00	4.57	-	-	-	-	-	-
12-Oct-24	1.80	5.10	3.38	-	-	-	-	-	-
13-Oct-24	1.00	6.31	2.68	-	-	-	-	-	-
14-Oct-24	2.06	10.00	3.68	-	-	-	-	-	-
15-Oct-24	2.00	10.00	3.72	-	-	-	-	-	-
16-Oct-24	2.50	10.00	3.70	-	-	-	-	-	-
17-Oct-24	2.40	10.00	3.74	-	-	-	-	-	-
18-Oct-24	2.40	10.00	4.10	-	-	-	-	-	-
19-Oct-24	2.40	10.00	3.97	-	-	-	-	-	-
20-Oct-24	0.50	7.00	2.77	-	-	-	-	-	-
21-Oct-24	2.11	8.00	3.60	-	-	-	-	-	-
22-Oct-24	2.40	10.00	4.14	-	-	-	-	-	-
23-Oct-24	2.05	10.00	3.69	-	-	-	-	-	-
24-Oct-24	1.90	10.00	3.38	-	-	-	-	-	-
25-Oct-24	1.50	10.00	3.20	-	-	-	-	-	-
26-Oct-24	1.50	7.00	2.89	-	-	-	-	-	-
27-Oct-24	1.00	6.21	2.37	-	-	-	-	-	-
28-Oct-24	1.00	6.25	2.53	-	-	-	-	-	-
29-Oct-24	1.00	7.50	2.45	-	-	-	-	-	-
30-Oct-24	1.70	10.00	2.98	-	-	-	-	-	-
31-Oct-24	1.00	7.00	2.28	-	-	-	-	-	-
	0.50[#]	10.00[#]	3.60	-	-	-	-	-	-

Source: IEX, PXIL and HPX

* Weighted average price computed based on Area Clearing Volume (ACV) and Area Clearing Price (ACP) for each hour of the day. Here, ACV and ACP represent the scheduled volume and weighted average price of all the bid areas of power exchanges.

Maximum/Minimum in the month

Table-31(c): PRICE OF REAL TIME TRANSACTIONS OF ELECTRICITY (DAY-WISE) (₹/kWh), OCTOBER 2024

Market Segment	Real Time Market of IEX			Real Time Market of PXIL			Real Time Market of HPX		
	Minimum ACP	Maximum ACP	Weighted Average Price*	Minimum ACP	Maximum ACP	Weighted Average Price*	Minimum ACP	Maximum ACP	Weighted Average Price*
1-Oct-24	2.07	10.00	4.97	10.00	10.00	10.00	-	-	-
2-Oct-24	1.83	10.00	4.28	10.00	10.00	10.00	-	-	-
3-Oct-24	2.17	10.00	4.31	7.00	10.00	10.00	10.00	10.00	10.00
4-Oct-24	2.17	10.00	3.83	7.00	10.00	7.88	10.00	10.00	10.00
5-Oct-24	2.42	10.00	4.56	10.00	10.00	10.00	10.00	10.00	10.00
6-Oct-24	1.31	4.60	3.03	-	-	-	-	-	-
7-Oct-24	2.73	10.00	4.51	10.00	10.00	10.00	7.00	10.00	7.50
8-Oct-24	2.79	10.00	5.01	10.00	10.00	10.00	10.00	10.00	10.00
9-Oct-24	3.09	10.00	4.51	10.00	10.00	10.00	-	-	-
10-Oct-24	1.60	6.00	3.36	-	-	-	-	-	-
11-Oct-24	2.17	6.00	3.18	-	-	-	-	-	-
12-Oct-24	0.50	3.70	2.53	-	-	-	-	-	-
13-Oct-24	1.52	3.51	2.75	-	-	-	-	-	-
14-Oct-24	2.42	4.94	3.34	-	-	-	-	-	-
15-Oct-24	2.00	8.00	3.38	-	-	-	-	-	-
16-Oct-24	1.43	10.00	3.57	-	-	-	-	-	-
17-Oct-24	1.00	10.00	3.44	-	-	-	-	-	-
18-Oct-24	2.12	10.00	3.99	3.41	10.00	8.74	-	-	-
19-Oct-24	2.13	10.00	3.99	-	-	-	-	-	-
20-Oct-24	0.58	3.90	2.60	-	-	-	-	-	-
21-Oct-24	1.25	10.00	3.49	3.08	4.24	3.52	-	-	-
22-Oct-24	1.71	6.56	3.16	-	-	-	-	-	-
23-Oct-24	1.52	10.00	3.48	6.30	6.30	6.30	-	-	-
24-Oct-24	0.69	6.00	2.94	-	-	-	-	-	-
25-Oct-24	1.00	6.00	2.99	-	-	-	-	-	-
26-Oct-24	1.10	8.28	3.15	-	-	-	-	-	-
27-Oct-24	1.00	4.97	2.98	-	-	-	-	-	-
28-Oct-24	2.85	10.00	4.69	-	-	-	-	-	-
29-Oct-24	2.25	10.00	4.39	10.00	10.00	10.00	-	-	-
30-Oct-24	2.90	10.00	4.33	10.00	10.00	10.00	-	-	-
31-Oct-24	0.42	4.24	2.50	-	-	-	-	-	-
	0.42[#]	10.00[#]	3.65	3.08[#]	10.00[#]	9.89	7.00[#]	10.00[#]	8.61

Source: IEX, PXIL and HPX

* Weighted average price computed based on Area Clearing Volume (ACV) and Area Clearing Price (ACP) for each hour of the day. Here, ACV and ACP represent the scheduled volume and weighted average price of all the bid areas of power exchanges.

Maximum/Minimum in the month

**Table-31(d): PRICE OF HIGH PRICE DAY AHEAD TRANSACTIONS OF ELECTRICITY (DAY-WISE) (₹/kWh),
OCTOBER 2024**

Market Segment	High Price Day Ahead Market of IEX			High Price Day Ahead Market of PXIL			High Price Day Ahead Market of HPX		
	Minimum ACP	Maximum ACP	Weighted Average Price	Minimum ACP	Maximum ACP	Weighted Average Price	Minimum ACP	Maximum ACP	Weighted Average Price
1-Oct-24	-	-	-	-	-	-	-	-	-
2-Oct-24	-	-	-	-	-	-	-	-	-
3-Oct-24	-	-	-	-	-	-	-	-	-
4-Oct-24	-	-	-	-	-	-	-	-	-
5-Oct-24	-	-	-	-	-	-	-	-	-
6-Oct-24	-	-	-	-	-	-	-	-	-
7-Oct-24	-	-	-	-	-	-	-	-	-
8-Oct-24	-	-	-	-	-	-	-	-	-
9-Oct-24	-	-	-	-	-	-	-	-	-
10-Oct-24	-	-	-	-	-	-	-	-	-
11-Oct-24	-	-	-	-	-	-	-	-	-
12-Oct-24	-	-	-	-	-	-	-	-	-
13-Oct-24	-	-	-	-	-	-	-	-	-
14-Oct-24	-	-	-	-	-	-	-	-	-
15-Oct-24	-	-	-	-	-	-	-	-	-
16-Oct-24	-	-	-	-	-	-	-	-	-
17-Oct-24	-	-	-	-	-	-	-	-	-
18-Oct-24	-	-	-	-	-	-	-	-	-
19-Oct-24	-	-	-	-	-	-	-	-	-
20-Oct-24	-	-	-	-	-	-	-	-	-
21-Oct-24	-	-	-	-	-	-	-	-	-
22-Oct-24	-	-	-	-	-	-	-	-	-
23-Oct-24	-	-	-	-	-	-	-	-	-
24-Oct-24	-	-	-	-	-	-	-	-	-
25-Oct-24	-	-	-	-	-	-	-	-	-
26-Oct-24	-	-	-	-	-	-	-	-	-
27-Oct-24	-	-	-	-	-	-	-	-	-
28-Oct-24	-	-	-	-	-	-	-	-	-
29-Oct-24	-	-	-	-	-	-	-	-	-
30-Oct-24	-	-	-	-	-	-	-	-	-
31-Oct-24	-	-	-	-	-	-	-	-	-
	-	-	-	-	-	-	-	-	-

Source: IEX, PXIL and HPX

Maximum/Minimum in the month

Table-32: VOLUME OF SHORT-TERM TRANSACTIONS OF ELECTRICITY (REGIONAL ENTITY*-WISE) (MU), OCTOBER 2024

Name of the Entity	Through Bilateral (Traders, PX, Direct)			Through Power Exchange (DAM + GDAM + HPDAM + RTM)			Total Net***
	Sale	Purchase	Net**	Sale	Purchase	Net**	
Punjab	14.28	41.24	26.96	33.80	769.66	735.85	762.81
Telangana	51.87	0.00	-51.87	156.23	734.20	577.97	526.10
Rajasthan	84.51	965.11	880.60	41.14	434.54	393.41	1274.01
West Bengal	78.18	120.41	42.23	131.78	330.35	198.57	240.79
Kerala	0.15	207.58	207.43	8.38	72.03	63.65	271.08
Uttar Pradesh	189.51	273.04	83.54	354.32	602.37	248.04	331.58
Maharashtra	55.89	607.76	551.87	48.66	1153.06	1104.40	1656.27
Karnataka	178.23	8.68	-169.54	320.66	73.87	-246.80	-416.34
Gujarat	220.27	853.41	633.13	58.11	818.82	760.72	1393.85
Assam	0.00	14.02	14.02	331.23	60.29	-270.94	-256.92
Tamil Nadu	33.25	452.89	419.63	224.48	400.48	176.00	595.63
Andhra Pradesh	3.13	363.09	359.96	108.11	250.67	142.56	502.52
Delhi	43.83	270.12	226.29	49.03	442.24	393.21	619.50
Odisha	127.03	110.75	-16.28	489.30	141.32	-347.98	-364.26
Jammu Kashmir	3.91	148.40	144.50	38.89	307.75	268.86	413.36
Bihar	0.00	59.51	59.51	356.76	9.21	-347.56	-288.05
Damodar Valley Corporation	95.98	0.00	-95.98	19.32	193.66	174.34	78.36
Chhattisgarh	86.63	152.89	66.26	115.42	300.49	185.08	251.34
Uttarakhand	0.00	108.55	108.55	37.10	270.20	233.10	341.65
Daman and Diu - Dadra and Nagar Haveli	0.00	0.00	0.00	0.83	248.45	247.62	247.62
Madhya Pradesh	79.73	96.40	16.66	565.16	84.27	-480.89	-464.23
Tripura	0.00	1.15	1.15	7.71	20.38	12.68	13.83
Jharkhand	0.00	17.99	17.99	73.78	56.64	-17.14	0.85
ArcelorMittal Nippon Steel India Limited	0.00	50.68	50.68	0.00	193.32	193.32	244.00
HIMACHAL PRADESH	31.64	154.97	123.33	101.13	72.37	-28.76	94.57
BALCO (Bulk Consumer)	0.00	32.46	32.46	0.00	26.29	26.29	58.75
Jindal Power Limited, Stage-2	377.59	0.00	-377.59	292.03	12.31	-279.72	-657.31
Haryana	1.25	15.19	13.94	148.50	116.20	-32.30	-18.36
Manipur	0.00	0.00	0.00	32.30	1.51	-30.79	-30.79
SKS Power Generation Chhattisgarh Limited	202.49	0.00	-202.49	44.42	23.20	-21.22	-223.71
Meghalaya	25.37	4.33	-21.04	61.24	12.83	-48.41	-69.44
The Tata Power Co Ltd (MTPS)	0.00	0.00	0.00	7.43	0.00	-7.43	-7.43
Government of Himachal Pradesh_NJHPS	0.00	0.00	0.00	63.15	3.79	-59.36	-59.36
MB POWER (MADHYA PRADESH) LIMITED	151.11	0.00	-151.11	15.08	3.54	-11.54	-162.65
Government of Himachal Pradesh_Koldam HEP	0.00	0.00	0.00	26.66	1.84	-24.82	-24.82
Adani Power Limited - Raigarh TPP	142.04	9.60	-132.44	161.19	8.07	-153.12	-285.56
North Central Railway Prayagraj	0.00	0.00	0.00	0.00	33.51	33.51	33.51
Goa WR	0.00	22.50	22.50	3.52	36.43	32.92	55.42
Government of Himachal Pradesh_CHAMERA2HEP	0.00	0.00	0.00	10.24	2.32	-7.92	-7.92
Goa SR	0.53	0.00	-0.53	0.04	15.96	15.92	15.39
Government of Himachal Pradesh_Parbat3HEP	0.00	0.00	0.00	4.87	0.45	-4.42	-4.42
Government of Himachal Pradesh_RampurHEP	0.00	0.00	0.00	18.76	1.10	-17.66	-17.66
Government of Himachal Pradesh_Chamera3HEP	0.00	0.00	0.00	7.61	0.81	-6.81	-6.81
Government of Himachal Pradesh_Chamera1HEP	0.00	0.00	0.00	8.73	0.23	-8.50	-8.50
SIMHAPURI ENERGY LIMITED	179.67	0.00	-179.67	29.75	0.49	-29.26	-208.93
Chandigarh (UT)	0.00	6.84	6.84	21.86	7.72	-14.13	-7.29
ACB (INDIA) LIMITED	64.13	0.00	-64.13	46.20	0.33	-45.86	-109.99
Government of Himachal Pradesh_BairasuilHEP	0.00	0.00	0.00	3.54	0.27	-3.27	-3.27
Ratnagiri Gas & Power Private Limited	5.45	0.00	-5.45	0.04	1.99	1.94	-3.51
Sainj HEP	0.00	0.00	0.00	14.08	0.18	-13.90	-13.90
SHREE CEMENT LIMITED TPS	107.02	0.00	-107.02	29.37	0.00	-29.37	-136.39
Nagaland	0.00	0.00	0.00	14.51	0.00	-14.51	-14.51
NTPC Jhanor Gandhar GPS	0.18	0.00	-0.18	0.00	0.77	0.77	0.58
Singoli Bhatwari HEP	4.61	0.00	-4.61	31.01	0.00	-31.01	-35.62
Arunachal Pradesh	3.26	0.00	-3.26	64.74	0.00	-64.74	-68.00
Sikkim	6.29	0.07	-6.22	31.30	0.12	-31.18	-37.40
KARCHAM WANGTOO HEP	5.02	0.00	-5.02	47.20	0.00	-47.20	-52.22
Pondicherry UT	0.00	0.00	0.00	16.95	0.23	-16.73	-16.73
JUNIPER GREEN COSMIC PVT. LTD._INFIRM	0.00	0.00	0.00	6.07	0.00	-6.07	-6.07

Mizoram	0.59	0.00	-0.59	19.98	0.00	-19.98	-20.57
Budhil HEP (Greenko Budhil Hydro Power Pvt. Ltd.)	0.00	0.00	0.00	2.88	0.00	-2.88	-2.88
AD HYDRO POWER LIMITED	13.48	0.00	-13.48	21.65	0.00	-21.65	-35.13
NABINAGAR POWER GENERATING CO LTD	0.00	0.00	0.00	56.51	0.00	-56.51	-56.51
NTPC Singrauli	0.00	0.00	0.00	14.21	0.00	-14.21	-14.21
SEIL ENERGY INDIA LIMITED	35.41	0.00	-35.41	107.36	0.00	-107.36	-142.78
MEENAKSHI ENERGY LIMITED	21.63	1.68	-19.95	25.06	3.85	-21.20	-41.15
NTPC Farakka stage I	0.00	0.00	0.00	68.47	0.00	-68.47	-68.47
Sasan Power Limited	0.00	0.00	0.00	5.15	0.00	-5.15	-5.15
TRN ENERGY PRIVATE LIMITED	15.19	0.00	-15.19	16.30	0.00	-16.30	-31.49
NLC Tamilnadu Power Limited	0.00	0.00	0.00	9.80	0.00	-9.80	-9.80
RENEW SURYA OJAS PRIVATE LIMITED-Wind	0.00	0.00	0.00	32.44	0.00	-32.44	-32.44
Adani Power Limited-Raipur TPP	316.80	0.00	-316.80	265.17	0.00	-265.17	-581.96
ADANI RENEWABLE ENERGY HOLDING 4 LTD	28.23	0.00	-28.23	163.24	0.00	-163.24	-191.47
NTPC Tanda Stage II	0.00	0.00	0.00	19.59	0.00	-19.59	-19.59
NTPC Rihand stage III	0.00	0.00	0.00	5.23	0.00	-5.23	-5.23
D B Power Limited	104.60	0.00	-104.60	54.68	0.00	-54.68	-159.28
NTPC Rihand stage II	0.00	0.00	0.00	4.79	0.00	-4.79	-4.79
NTPC Kahalgaon stage II	0.00	0.00	0.00	23.82	0.00	-23.82	-23.82
ADANI RENEWABLE ENERGY 41 LTD_infirm	5.56	0.00	-5.56	31.14	0.00	-31.14	-36.71
MAHAN ENERGEN LIMITED U#1	42.30	0.00	-42.30	255.41	0.00	-255.41	-297.71
NEA MUZAFFARPUR	0.00	0.00	0.00	74.94	0.00	-74.94	-74.94
Jhabua Power Limited	85.74	0.00	-85.74	3.83	9.79	5.96	-79.78
NTPC Sipat Stage I	0.00	0.00	0.00	23.81	0.00	-23.81	-23.81
Jindal Steel & Power Ltd , DCP	0.00	0.00	0.00	81.40	1.47	-79.92	-79.92
MAITHON POWER LIMITED	0.00	0.00	0.00	6.53	0.00	-6.53	-6.53
RENEW SURYA ROSHNI PVT. LTD. PS	0.00	0.00	0.00	0.65	0.00	-0.65	-0.65
NTPC BARH Stage II	0.00	0.00	0.00	22.17	0.00	-22.17	-22.17
NTPC North Karanpura STPS	0.00	0.00	0.00	19.88	0.00	-19.88	-19.88
Jindal Power Limited, Stage-1	144.53	0.00	-144.53	123.20	3.74	-119.46	-263.99
NTPC Talcher Super Thermal Power Station Stage II	0.00	0.00	0.00	38.96	0.00	-38.96	-38.96
NTPC Telangana	0.00	0.00	0.00	5.75	0.00	-5.75	-5.75
NTPC Korba Stage I &II	0.00	0.00	0.00	13.73	0.00	-13.73	-13.73
NTPC Darlipali	0.00	0.00	0.00	4.73	0.00	-4.73	-4.73
NTPC Kahalgaon stage I	0.00	0.00	0.00	11.66	0.00	-11.66	-11.66
NLC INDIA LIMITED NEYVELI NEW TPS	0.00	0.00	0.00	12.19	0.00	-12.19	-12.19
NTPC Vindhyachal Stage IV	0.00	0.00	0.00	12.14	0.00	-12.14	-12.14
NTPC Gadarwara	0.00	0.00	0.00	7.18	0.00	-7.18	-7.18
NEPAL ELECTRICITY AUTHORITY TANAKPUR	0.00	0.00	0.00	42.42	0.00	-42.42	-42.42
NREL-Dayapar Wind	0.00	0.00	0.00	4.38	0.00	-4.38	-4.38
NTPC Rihand stage I	0.00	0.00	0.00	4.41	0.00	-4.41	-4.41
Sorang HEP (Himachal Sorang Power Pvt. Ltd.)	21.79	0.00	-21.79	2.42	0.00	-2.42	-24.21
NTPC Sipat Stage II	0.00	0.00	0.00	9.19	0.00	-9.19	-9.19
MAHAN ENERGEN LIMITED U#2	155.39	2.07	-153.33	172.01	0.00	-172.01	-325.33
NTPC Farakka stage III	0.00	0.00	0.00	13.82	0.00	-13.82	-13.82
NTPC Vindhyachal Stage I	0.00	0.00	0.00	12.26	0.00	-12.26	-12.26
NTPC Lara Stage I	0.00	0.00	0.00	6.02	0.00	-6.02	-6.02
NTPC Vindhyachal Stage III	0.00	0.00	0.00	11.65	0.00	-11.65	-11.65
NTPC Vindhyachal Stage II	0.00	0.00	0.00	8.80	0.00	-8.80	-8.80
ADANI WIND ENERGY KUTCHH 4 Ltd. Nakhatrana	4.89	0.00	-4.89	26.84	0.00	-26.84	-31.73
ReNew Surya Ravi Private Limited	7.23	0.00	-7.23	40.14	0.00	-40.14	-47.37
Transition Green Energy Private Limited	0.00	0.00	0.00	23.03	0.00	-23.03	-23.03
NTPC KUDGI	0.00	0.00	0.00	4.90	0.00	-4.90	-4.90
NTPC Ramagundam Stage I &II	0.00	0.00	0.00	2.73	0.00	-2.73	-2.73
KAMENG HYDRO POWER STATION	0.00	0.00	0.00	121.28	0.00	-121.28	-121.28
BHARAT ALUMINIUM COMPANY LTD	1.36	0.00	-1.36	55.99	0.00	-55.99	-57.35
NTPC khargone	0.00	0.00	0.00	6.92	0.00	-6.92	-6.92
Adani Green Energy Twenty Five B Limited_infirm	0.00	0.00	0.00	105.83	0.00	-105.83	-105.83
NTPC Unchahar Stage IV	0.00	0.00	0.00	3.04	0.00	-3.04	-3.04
NLC INDIA LIMITED TPS II STAGE II	0.00	0.00	0.00	5.69	0.00	-5.69	-5.69
IGSTPS JHAJJAR	99.75	0.00	-99.75	5.09	0.00	-5.09	-104.84
NTPC Simhadri Stage II	0.00	0.00	0.00	6.50	0.00	-6.50	-6.50
Grian Energy Private Limited	0.00	0.00	0.00	6.52	0.00	-6.52	-6.52

Bongaigaon Thermal Power Station NTPC	0.00	0.00	0.00	9.30	0.00	-9.30	-9.30
NLC INDIA LIMITED TPS II STAGE I	0.00	0.00	0.00	4.31	0.00	-4.31	-4.31
NTPC Vindhyachal Stage V	0.00	0.00	0.00	5.26	0.00	-5.26	-5.26
Amplus Ages Private Limited	0.00	0.00	0.00	2.63	0.00	-2.63	-2.63
NLC INDIA LIMITED THERMAL POWER STATION I EXPANSION	0.00	0.00	0.00	6.91	0.00	-6.91	-6.91
VENA ENERGY VIDYUTH PVT. LTD._INFIRM	0.00	0.00	0.00	11.17	0.00	-11.17	-11.17
RENEW SURYA OJAS PVT. LTD._INFIRM	0.00	0.00	0.00	0.55	0.00	-0.55	-0.55
Palatana Plant	0.56	0.00	-0.56	23.19	0.00	-23.19	-23.75
Onevolt Energy Private Limited	0.00	0.00	0.00	6.49	0.00	-6.49	-6.49
Transition Energy Services Private Limited	0.00	0.00	0.00	16.51	0.00	-16.51	-16.51
ADHUNIK POWER & NATURAL RESOURCES LTD.	0.00	0.00	0.00	3.48	0.00	-3.48	-3.48
SEIL Energy India Limited Project II	4.85	0.00	-4.85	24.41	0.00	-24.41	-29.25
NTPC BARH Stage I	0.00	0.00	0.00	6.98	0.00	-6.98	-6.98
OSTRO KANNADA POWER PVT. LTD.	8.22	0.00	-8.22	5.42	0.00	-5.42	-13.64
IND BARATH ENERGY UTKAL LTD.	128.32	0.00	-128.32	49.27	0.00	-49.27	-177.59
NTPP BRBCL	0.00	0.00	0.00	9.78	0.00	-9.78	-9.78
NTPC Unchahar Stage I	0.00	0.00	0.00	1.23	0.00	-1.23	-1.23
NTPC Korba Stage III	0.00	0.00	0.00	4.58	0.00	-4.58	-4.58
NTPC Unchahar Stage II	0.00	0.00	0.00	2.06	0.00	-2.06	-2.06
GMR Warora Energy Limited	25.47	0.00	-25.47	1.65	0.00	-1.65	-27.11
NTPC Mouda Stage I	0.00	0.00	0.00	1.68	0.00	-1.68	-1.68
Serentica Renewables India 1 Private Limited	25.74	0.00	-25.74	1.68	0.00	-1.68	-27.42
NTPC Dadri Stage II	0.00	0.00	0.00	0.87	0.00	-0.87	-0.87
R.K.M POWERGEN PRIVATE LIMITED	77.85	0.00	-77.85	6.40	0.00	-6.40	-84.25
NTPC Dadri Stage I	0.00	0.00	0.00	2.75	0.00	-2.75	-2.75
NTECL VALLUR	0.00	0.00	0.00	0.25	0.00	-0.25	-0.25
Serentica Renewables India 4 Private Limited	0.00	0.00	0.00	0.39	0.00	-0.39	-0.39
ADANI GREEN ENERGY 25 LTD._infirm	0.00	0.00	0.00	51.98	0.00	-51.98	-51.98
NTPC Solapur	0.00	0.00	0.00	2.43	0.00	-2.43	-2.43
ASSAM GAS BASED POWER STATION	0.00	0.00	0.00	1.09	0.00	-1.09	-1.09
KANTI BIJLEE UTPADAN NIGAM LIMITED	0.00	0.00	0.00	25.83	0.00	-25.83	-25.83
NTPC Simhadri Stage I	0.00	0.00	0.00	0.86	0.00	-0.86	-0.86
ADANI SOLAR ENERGY RJ 2 PVT. LTD.	0.00	0.00	0.00	42.21	0.00	-42.21	-42.21
NTPC Ramagundam Stage III	0.00	0.00	0.00	0.94	0.00	-0.94	-0.94
Amp Energy Green Six Private Limited	0.00	0.00	0.00	22.89	0.00	-22.89	-22.89
Nikachhu Hydropower Project	0.00	0.00	0.00	14.73	0.00	-14.73	-14.73
NTPC Mouda Stage II	0.00	0.00	0.00	1.03	0.00	-1.03	-1.03
NLC INDIA LIMITED TPS II EXPANSION	0.00	0.00	0.00	1.77	0.00	-1.77	-1.77
Basochhu Hydropower Plant Bhutan	0.00	0.00	0.00	36.07	0.00	-36.07	-36.07
RENEW SURYA PRATAP PRIVATE LIMITED	0.00	0.00	0.00	40.68	0.00	-40.68	-40.68
Tashiding HEP, Shiga Energy Private Limited	0.00	0.00	0.00	0.44	0.00	-0.44	-0.44
TPSL Banderwala SECI 100_INF	16.78	0.00	-16.78	3.58	0.00	-3.58	-20.37
JORETHANG LOOP HEP, DANS ENERGY PRIVATE LIMITED	0.03	0.00	-0.03	0.42	0.00	-0.42	-0.44
Adept Renewable Technologies Private Limited	0.00	0.00	0.00	24.71	0.00	-24.71	-24.71
SEMBCORP GREEN INFRA PVT. LTD. (INFIRM)	0.00	0.00	0.00	4.78	0.00	-4.78	-4.78
IL&FS TAMIL NADU POWER COMPANY LTD.	335.24	0.00	-335.24	6.85	0.00	-6.85	-342.09
DGEN MEGA POWER PROJECT	15.48	0.00	-15.48	13.00	0.00	-13.00	-28.48
Maruti Clean Coal and Power Limited	16.53	0.00	-16.53	1.99	0.08	-1.91	-18.44
Jaypee Nigrie Super Thermal Power Plant	213.63	0.00	-213.63	106.16	0.00	-106.16	-319.79
Adani Solar Energy Jaisalmer Two Pvt. Ltd. (Project-2)	0.00	0.00	0.00	17.57	0.00	-17.57	-17.57
NTPC Talcher Stage I	0.00	0.00	0.00	31.25	0.00	-31.25	-31.25
AGARTALA GAS BASED POWER STATION	0.00	0.00	0.00	0.31	0.00	-0.31	-0.31
Ayana Renewable Power Three Private Limited Infirm	0.00	0.00	0.00	10.01	0.00	-10.01	-10.01
VENA Energy Vidyuth Pvt. Ltd._Solar_INFIRM	0.00	0.00	0.00	5.10	0.00	-5.10	-5.10
Jindal India Thermal Power Limited	181.13	0.00	-181.13	198.05	0.00	-198.05	-379.19
WIND FIVE RENERGY LIMITED	0.65	0.00	-0.65	4.62	0.00	-4.62	-5.27
GMR KAMALANGA ENERGY LTD-CTU	0.00	0.00	0.00	1.61	0.00	-1.61	-1.61
NTPC Unchahar Stage III	0.00	0.00	0.00	0.42	0.00	-0.42	-0.42
RENEW Surya Roshni Pvt. Ltd.-Fatehgarh-III PS	0.00	0.00	0.00	0.04	0.00	-0.04	-0.04
ADANI SOLAR ENERGY JODHPUR TWO LTD.	0.00	0.00	0.00	6.96	0.00	-6.96	-6.96
COASTAL ENERGEN PVT. LTD.	143.74	124.39	-19.35	0.64	0.00	-0.64	-19.99

DHARIWAL STU OTH	2.02	0.00	-2.02	2.30	0.00	-2.30	-4.32
CONTINUUM POWER TRADING (TN) PVT. LTD.	0.00	0.00	0.00	2.01	0.00	-2.01	-2.01
NTPC SAIL POWER COMPANY LTD.	0.00	0.00	0.00	0.04	0.00	-0.04	-0.04
Nani Virani Wind Energy Pvt. Ltd.	0.12	0.00	-0.12	1.60	0.00	-1.60	-1.72
TPSL 200MW TPTCL Banderwala	2.08	0.00	-2.08	20.24	0.00	-20.24	-22.32
Adani Green Energy Twenty Six B Ltd._infirm	0.00	0.00	0.00	22.12	0.00	-22.12	-22.12
Chuzachen HEP	0.05	0.00	-0.05	0.65	0.00	-0.65	-0.69
Dhariwal ISTS	13.21	0.00	-13.21	3.46	0.00	-3.46	-16.67
Adani Green Energy Twenty Five A Ltd._Infirm	0.00	0.00	0.00	16.68	0.00	-16.68	-16.68
NTPC SOLAPUR SOLAR PV Station	1.63	0.00	-1.63	0.00	0.00	0.00	-1.63
Adani Solar Energy Rj Two Pvt. Ltd. (infirm)	0.00	0.00	0.00	0.48	0.00	-0.48	-0.48
ADANI GREEN ENERGY 26 A LTD._infirm	0.00	0.00	0.00	0.60	0.00	-0.60	-0.60
ADANI WIND ENERGY KUTCHH FOUR Ltd. Nakhatrana (Infirm)	0.00	0.00	0.00	3.57	0.00	-3.57	-3.57
Ramagundam Floating solar	13.12	0.00	-13.12	4.85	0.00	-4.85	-17.97
Simhadri FSP 15 MW	0.00	0.00	0.00	1.51	0.00	-1.51	-1.51
Simhadri Floating solar (10 MW)	0.00	0.00	0.00	0.93	0.00	-0.93	-0.93
2X600 VEDANTA LTD. Chhattisgarh Power Plant	0.00	0.00	0.00	0.00	0.01	0.01	0.01
DHARIWAL STU MH	170.03	0.00	-170.03	0.00	0.00	0.00	-170.03
Dudhkunda Khola Hydropower Project	5.54	0.00	-5.54	0.00	0.00	0.00	-5.54
IRCON RENEWABLE POWER LTD. Infirm	9.72	0.00	-9.72	0.00	0.00	0.00	-9.72
JSW RENEW ENERGY LTD. INFIRM	0.00	0.00	0.00	4.03	0.00	-4.03	-4.03
MAYA KHOLA HYDRO POWER PROJECT	6.89	0.00	-6.89	0.00	0.00	0.00	-6.89
Modi Khola Hydropower Project	6.87	0.00	-6.87	0.00	0.00	0.00	-6.87
NEA - Bihar STU	18.03	0.00	-18.03	0.00	0.00	0.00	-18.03
NEA Nepal Solu Khola (Dudhkoshi) Hydropower Project	9.15	0.00	-9.15	0.00	0.00	0.00	-9.15
ANTA	0.01	0.00	-0.01	0.00	0.00	0.00	-0.01
DADRI	0.63	0.00	-0.63	0.00	0.00	0.00	-0.63
Kawas	0.46	0.00	-0.46	0.00	0.80	0.80	0.33
SEMBCORP ENERGY INDIA LTD.	36.93	0.00	-36.93	0.00	0.00	0.00	-36.93
Sembcorp Energy India Ltd. Project II	45.43	0.00	-45.43	0.00	0.00	0.00	-45.43
JUNIPER GREEN COSMIC PVT. LTD.	0.00	0.00	0.00	13.14	0.00	-13.14	-13.14
Serentica Renewables India 5 Pvt. Ltd.	0.00	0.00	0.00	8.36	0.00	-8.36	-8.36
ADANI RENEWABLE ENERGY 55 LTD._Infirm	0.00	0.00	0.00	28.66	0.00	-28.66	-28.66
AMBUJA CEMENTS LTD.(Khavda PSS-3)_infirm	0.08	0.00	-0.08	12.43	0.00	-12.43	-12.50
Serentica Renewables India 5 Pvt. Ltd.- Infirm	0.00	0.00	0.00	12.81	0.00	-12.81	-12.81
Acme Phalodi Solar Energy Pvt. Ltd._Infirm	0.00	0.00	0.00	16.19	0.00	-16.19	-16.19
Transition Sustainable Energy Services One Pvt. Ltd.- Infirm	0.00	0.00	0.00	2.67	0.00	-2.67	-2.67
Acme Raisar Solar Energy Pvt. Ltd._Infirm	0.00	0.00	0.00	2.07	0.00	-2.07	-2.07
IRCON RENEWABLE POWER LTD.	3.04	0.00	-3.04	0.00	0.00	0.00	-3.04

Source: NLDC

* in case of a state, the entities which are "selling" also include generators connected to state grid and the entities which are "buying" also include open access consumers.

** (-) indicates sale and (+) indicates purchase,

*** Total net includes net of transactions through bilateral and power exchanges

Table-33: VOLUME AND CHARGES UNDER DSM (DAY-WISE), OCTOBER 2024

Date	Volume (MU)	All India Grid Charges (₹/kWh)		
		Minimum	Maximum	Average
1-Oct-24	85.78	2.88	10.83	6.02
2-Oct-24	88.52	2.51	11.44	5.78
3-Oct-24	88.91	2.79	12.06	5.89
4-Oct-24	89.18	2.81	12.36	5.87
5-Oct-24	88.60	2.86	12.70	5.78
6-Oct-24	88.29	2.07	10.00	4.17
7-Oct-24	80.71	3.02	10.20	5.74
8-Oct-24	81.92	3.24	11.01	5.95
9-Oct-24	83.40	3.15	10.02	5.93
10-Oct-24	85.88	8.00	10.00	9.69
11-Oct-24	87.66	3.57	10.00	5.40
12-Oct-24	89.19	1.68	5.83	3.30
13-Oct-24	89.95	1.99	5.81	3.19
14-Oct-24	89.44	2.42	8.51	3.71
15-Oct-24	86.80	2.78	8.68	3.86
16-Oct-24	85.79	2.38	10.00	4.03
17-Oct-24	90.34	2.47	10.00	4.31
18-Oct-24	81.72	2.80	10.34	4.59
19-Oct-24	81.23	2.66	10.65	4.65
20-Oct-24	81.37	1.75	10.00	3.40
21-Oct-24	86.89	1.90	10.00	4.00
22-Oct-24	77.13	2.60	10.00	4.02
23-Oct-24	78.07	2.65	13.26	4.46
24-Oct-24	80.06	1.99	10.00	3.68
25-Oct-24	75.53	2.01	10.00	3.64
26-Oct-24	76.72	2.18	10.00	3.76
27-Oct-24	79.39	1.76	10.00	3.31
28-Oct-24	76.95	3.00	10.00	4.57
29-Oct-24	74.66	2.51	10.06	4.58
30-Oct-24	76.72	2.90	10.46	4.51
31-Oct-24	82.67	1.68	9.92	3.37
Total	2589.44	1.68[#]	13.26[#]	4.68
<i>Source: NLDC</i>				
<i># Maximum/Minimum in the month</i>				

Table-34: VOLUME OF ELECTRICITY UNDER DRAWAL/ OVER INJECTION (EXPORTED) UNDER DSM, OCTOBER 2024

Name of the Entity	Volume of Under drawal/ Over injection (MUs)	% of Volume
Madhya Pradesh	116.19	4.69
Gujarat	114.48	4.62
Punjab	109.32	4.41
Haryana	101.83	4.11
Rajasthan	84.26	3.40
Tamil Nadu	83.75	3.38
Telangana	70.95	2.86
Andhra Pradesh	60.97	2.46
Uttar Pradesh	54.76	2.21
SKS Power	53.85	2.17
Ramagundam	51.75	2.09
Telangana super thermal power plant	51.46	2.08
Karnataka	50.66	2.04
Himachal Pradesh	50.32	2.03
Chattisgarh	46.70	1.88
Delhi	31.43	1.27
Maharashtra	29.70	1.20
Jammu & Kashmir	27.36	1.10
NTPC Solapur Thermal Power Station Stage-1	26.46	1.07
DVC Beneficiary	23.52	0.95
Sasan Ultra Mega Power Project	21.05	0.85
Uttarakhand	20.89	0.84
JHARKHAND Beneficiary	20.40	0.82
Jindal Power Ltd. Stage-2	19.25	0.78
IGSTPS JHAJJAR	19.14	0.77
ARCELORMITTAL NIPPON STEEL INDIA LTD. Beneficiary	18.20	0.73
DADRI TPS#1	17.60	0.71
NTPC_KUDGI	17.34	0.70
ADANI RENEWABLE ENERGY HOLDING FOUR LIMITED	17.04	0.69
Assam Gas Based Power Plant(Kathalguri)	15.66	0.63
Simhardi Stage-1	15.39	0.62
NTPC Gadarwara Super Thermal Power Plant Stage-I	15.38	0.62
Simhardi Stage-2	14.50	0.59
Bihar	14.10	0.57
Railways	13.76	0.56
Odisha	13.34	0.54
Jindal Power Ltd.	11.81	0.48
NTPC Khargone Super Thermal Power Plant	11.18	0.45
TANDA STAGE #2	10.24	0.41
Ramagundam stage 3	10.21	0.41
Adani Solar Energy Jaisalmer One Private Limited WIND	10.01	0.40
ADANI RENEWABLE ENERGY HOLDING FOUR LIMITED PS2	9.99	0.40
Adani Power Limited - Raipur TPP	9.86	0.40
Semcorp Energy India Limited_Project-2(SGPL)	9.55	0.39
Pondichery	9.48	0.38
TP Saurya Unit-2	9.04	0.36
Mizoram	8.96	0.36
UNCHAHAR 2	8.84	0.36
NAPTHA JHAKRI HEP	8.72	0.35
UNCHAHAR 4	8.63	0.35
Adani Solar Energy Jaisalmer Four Private Limited SOLAR	8.62	0.35
NTPC Mauda Super Thermal Power Station	8.59	0.35
JPNIGRIE (JNSTPP)	8.03	0.32
BARH I	7.92	0.32
ReNew Surya Roshni Pvt Ltd	7.88	0.32
Dadar & Nagar Haveli, Daman & Diu	7.82	0.32
NEW NEYVELI THERMAL POWER PALNT	7.76	0.31
Vallur Thermal Power Station	7.69	0.31
NEA-Bihar	7.61	0.31
Rampur Hydro	7.51	0.30
Clean Solar Power (bhadla) Pvt. Ltd	7.43	0.30
NABINAGAR STPP (NPGC)	7.34	0.30

ReNew Surya Ojas Private Limited koppal	7.31	0.30
Azure Power Forty Three Private Limited	7.18	0.29
NEPAL_NVVN	7.09	0.29
NTPC Mauda Super Thermal Power Station Stage 2	7.06	0.28
MAHAN ENERGEN LIMITED	6.86	0.28
Kerala	6.85	0.28
RAP-B	6.80	0.27
Adani Wind Energy MP One Private Limited	6.68	0.27
Meghalaya	6.48	0.26
Adani Power Limited - Raigarh TPP	6.45	0.26
BHAKRA	6.44	0.26
Assam	6.43	0.26
Manipur	6.38	0.26
West Bengal	6.37	0.26
NLC Tamli Nadu Power Ltd	6.26	0.25
UNCHAAR 1	6.17	0.25
DADRI TPS#2	6.14	0.25
BALCO_CTU	6.07	0.25
Adani Green Energy Ltd	6.07	0.25
Moser Baer Power (MB Power) MP Limited	5.90	0.24
Maithon Power Ltd.	5.63	0.23
PVG_Tata Power Renewable Energy Limited	5.61	0.23
RKM Power	5.61	0.23
Talcher stage 2	5.61	0.23
Korba Super Thermal Power Station Stage I&II	5.49	0.22
TPCL Mundra Thermal Power Station (formerly CGPL)	5.45	0.22
Tuticorin_JSWRenew_W_Infirm	5.33	0.22
NLCII Stage 2	5.25	0.21
Masaya Solar Energy Private Limited	5.12	0.21
Tehri Hydro	5.12	0.21
Dehar Hydro	5.09	0.21
Ayana Renewable Power One Private Limited	5.05	0.20
URI	5.03	0.20
BARH	5.01	0.20
Darlipali Super Thermal Power Station	4.93	0.20
NSPCL	4.89	0.20
NLCII Stage 1	4.87	0.20
Chamera 1	4.86	0.20
Tripura	4.80	0.19
Karacham Wangtoo	4.79	0.19
Adani Wind Energy Kutchh Four Ltd, Nakhatrana and Dedhiya	4.76	0.19
JSW Renew Energy Limited Savalaperi infirm	4.71	0.19
JSW Renew Energy Limited Savalaperi	4.71	0.19
Jhabua	4.70	0.19
NTPC Vindhyachal Super Thermal Power Station Stage 3	4.70	0.19
Kahalgaoon stage 2	4.61	0.19
ADANI HYBRID ENERGY JAILSALMER TWO LTD (SOLAR ONLY)	4.46	0.18
NPCIL Kakrapar Atomic Power Plant	4.35	0.18
OSTRO Energy Private Limited	4.33	0.17
Ananthapuramu (Sprng) Ultra Mega Solar Park	4.28	0.17
Girel, Tuticorin	4.17	0.17
TANAKPUR	4.15	0.17
Thar Surya 1 Private Limited	4.14	0.17
GRT Jewellers (India) Private Limited_GRTJIPL	4.09	0.16
AYANA RENEWABLE POWER SIX PRIVATE LIMITED	4.07	0.16
Nidan NTPC	4.02	0.16
Goa (WR)	3.97	0.16
LANCO AMARKANTAK	3.94	0.16
Kolayat Solar Power Plant	3.92	0.16
Avaada Sunrays Energy Private Limited	3.91	0.16
ADANI HYBRID ENERGY JAILSALMER ONE LTD (SOLAR ONLY)	3.90	0.16
URI Stage 2	3.75	0.15
Eden Renewable Cite Private Limited	3.67	0.15
Arunachal Pradesh	3.66	0.15
Altra Xergi Power Private Limited	3.63	0.15

NTPC Vindhyachal Super Thermal Power Station Stage 2	3.57	0.14
NTPC Farakka	3.56	0.14
Sitac Kabini Renewables Pvt. Ltd.	3.55	0.14
ReNew Sun Bright Private Limited	3.55	0.14
Renew Power Limited SECI-II	3.51	0.14
Arinsun Clean Energy Private Ltd	3.49	0.14
AM Green Energy Private Limited Wind_Infirm	3.45	0.14
Adani NPKUNTA_SOLAR	3.45	0.14
NTPC, NPKunta	3.45	0.14
Avaada Sustainable RJProject Private Limited	3.43	0.14
NTPC Vindhyachal Super Thermal Power Station Stage I	3.41	0.14
NLC Expansion	3.40	0.14
Athena Jaipur Solar Power Pvt. Ltd.	3.39	0.14
Avaada Sunce Energy Private Limited	3.38	0.14
Azure Power Forty One Private Limited	3.38	0.14
NTPC Sipat Thermal Power Station Stage-1	3.37	0.14
Fortum Solar	3.34	0.13
Apraava Energy Private Limited (AEPL)	3.33	0.13
Serentica Renewables India 1 Private Limited	3.33	0.13
ACME Heergarh Powertech Private Limited	3.29	0.13
SINGRAULI TPS	3.28	0.13
NTPC Vindhyachal Super Thermal Power Station Stage 4	3.24	0.13
Talcher stage 1	3.24	0.13
AVAADA SUNSHINE ENERGY PRIVATE LIMITED	3.20	0.13
Betam, Tuticorin	3.19	0.13
Orange, Tuticorin	3.18	0.13
JSW RENEW ENERGY LIMITED	3.18	0.13
BRBCL_NABINAGAR	3.17	0.13
NTPC Lara	3.13	0.13
DP Power	3.12	0.13
Baba Atomic research Centre	3.09	0.12
ADANI GREEN ENERGY TWENTY FIVE LIMITED	3.06	0.12
Mega Solis Renewables Private Limited	3.06	0.12
Bongaigaon TPP(NTPC)	3.05	0.12
DULHASTI Hydro power	3.05	0.12
ABC RENEWABLE ENERGY PRIVATE LIMITED	3.02	0.12
RENEW SOLAR ENERGY (JHARKHAND) PRIVATE LIMITED	3.02	0.12
Koldam Hydro Power	3.02	0.12
Adani Solar Energy Jaisalmer Five Private Limited	3.02	0.12
BEEMPOW ENERGY PRIVATE LIMITED	2.98	0.12
HIRIYUR_OSTROKANNADA	2.96	0.12
Rihand Stage 3	2.95	0.12
ReNew Solar Urja Pvt Ltd	2.95	0.12
Kameng HEP	2.93	0.12
RENEW SURYA PRATAP	2.91	0.12
ADANI HYBRID WIND ENERGY JAILSALMER ONE LTD	2.85	0.12
Agartala Gas Turbine Power Plant	2.85	0.12
Renew Surya Aayan Private Limited	2.84	0.11
Nagaland	2.84	0.11
Mahindra Renewables Pvt Ltd.	2.82	0.11
NTPC Vindhyachal Super Thermal Power Station Stage 5	2.81	0.11
Azure Power Maple Private Limited	2.80	0.11
TATA POWER RENEWABLE ENERGY LIMITED	2.79	0.11
DHAULIGANGA HEP	2.79	0.11
Avaada RJHN Private Limited	2.77	0.11
Koteshwar hps	2.76	0.11
VENA ENERGY VIDYUTH PRIVATE LIMITED_SOLAR_INFIRM	2.72	0.11
NTPC ETTAYAPURAM SOLAR PLANT	2.68	0.11
ADANI HYBRID ENERGY JAILSALMER THREE LTD (SOLAR ONLY)	2.68	0.11
ADANI SOLAR ENERGY KA NINE PRIVATE LIMITED	2.67	0.11
Goa (SR)	2.67	0.11
Renew Solar Power Private Limited Bikaner	2.67	0.11
ADANI HYBRID ENERGY JAILSALMER THREE LTD (Wind ONLY)	2.64	0.11
RENEW SURYA OJAS PVT LIMITED	2.63	0.11
Adani Wind ENergy Kutchh One Limited	2.63	0.11

Renew Sun wave Pvt. Ltd. Fatehgarh2	2.59	0.10
Green Infra Wind Energy Limited SECI-II Vadva	2.56	0.10
Adani Renewable (RJ) Ltd	2.52	0.10
SEBICORP GREEN INFRA PRIVATE LIMITED (INFIRM)	2.50	0.10
Jindal Steel & power Ltd. (Dangamahua CPP)	2.50	0.10
Adani Solar Energy Jaisalmer One Private Limited	2.47	0.10
Mytrah, Tuticorin	2.38	0.10
Chamera 2	2.37	0.10
ADYAH SOLAR ENERGY PRIVATE LIMITED	2.36	0.10
Rongnichu Hydro Electric Project	2.36	0.10
Alfanar Energy Private Limited	2.32	0.09
Avikiran Solar India Private Ltd	2.32	0.09
ELECTRO SOLAIRE PVT. LTD.	2.31	0.09
Korba Super Thermal Power Station Stage III	2.26	0.09
ADANI HYBRID ENERGY JAILSALMER TWO LTD wind	2.26	0.09
RENEW SURYA RAVI	2.25	0.09
Ranganadi HEP	2.23	0.09
Semcorp Energy India Limited Project-1(SGPL)	2.18	0.09
Ayana, NPKUNTA	2.16	0.09
Ratnagiri Gas and Power PVT Limited	2.16	0.09
Mejia Thermal Power station stage 2	2.15	0.09
Adani Solar Energy Jaisalmer Two Private Limited (Project-2)	2.13	0.09
PARAMPUJYA SOLAR ENERGY PVT LTD	2.13	0.09
Mega Suryaurja Pvt Ltd	2.12	0.09
NTPC North Karanpura STPS	2.10	0.08
Avaada Solar, Pavagada	2.09	0.08
GMR Warora Energy Ltd.	2.07	0.08
Adani Solar Energy Jaisalmer Two Private Limited	2.05	0.08
NTPC Rihand stage 2	2.01	0.08
TATA POWER GREEN Energy Limited	2.00	0.08
Avaada solarize	1.98	0.08
Pong Hydro Power	1.93	0.08
KSK mahanadi	1.93	0.08
DEVIKOT SOLAR	1.92	0.08
NAPP	1.91	0.08
NVVN Bhutan	1.90	0.08
RISING SUN ENENERGY PVT LIMITED	1.90	0.08
NTPC RAMAGUNDAM FLOATING SOLAR PLANT	1.88	0.08
Nokhra Solar	1.85	0.07
Azure Solar	1.83	0.07
Unchahar stage 3	1.82	0.07
Kahalgaon stage 1	1.80	0.07
BALCO	1.80	0.07
Bangladesh	1.78	0.07
Torrent Solargen Ltd (Torrent Power Ltd)	1.74	0.07
PALATANA	1.74	0.07
Jindal India Thermal Power Ltd.	1.74	0.07
JSW RENEW ENERGY TWO LIMITED (KARUR)	1.74	0.07
Azure Power Pavagada	1.70	0.07
Bairasuil Hydro Power	1.65	0.07
TATA, Npkunta	1.65	0.07
Farakka stage 3	1.64	0.07
Ayana Renewable Power Three Private Limited	1.63	0.07
Chandigarh	1.62	0.07
Singoli Bhatwari HEP	1.61	0.06
JSW Energy Utkal Ltd	1.59	0.06
Rihand Stage 1	1.58	0.06
Chamera 3	1.55	0.06
Tashiding Hydro Power	1.55	0.06
ILFS	1.51	0.06
Green Infra Wind Energy Limited SECI-III Vadva	1.50	0.06
Kishanganga HEP	1.47	0.06
Azure Power Thirty Four pvt Limited	1.40	0.06
NLCTSII EXPANSION 2	1.39	0.06
Serentica Renewables India 4 Private Limited	1.37	0.06
Sipat Stage 2	1.37	0.06

SALAL Hydro	1.37	0.06
TRN Energy	1.35	0.05
Fortum finsurya	1.31	0.05
Adani Solar Energy Jaisalmer Two Private Limited Solar	1.31	0.05
Railways ER	1.27	0.05
SIKKIM Beneficiary	1.27	0.05
Adani Solar Energy Jaisalmer Two Private Limited, bhadla	1.25	0.05
IRCON RENEWABLE POWER LIMITED_PAVAGADA	1.25	0.05
TPSL Banderwala	1.25	0.05
SIMHAPURI(SEPL)	1.25	0.05
KREDL, Pavagada	1.21	0.05
RAP-C	1.16	0.05
INOX GREEN ENERGY SERVICES LIMITED	1.14	0.05
Renew Surya Vihaan Private Limited	1.13	0.05
GUJARAT INDUSTRIES POWER COMPANY LTD	1.12	0.05
Gujarat State Electricity Corporation Limited, Radhanesda	1.08	0.04
AMP Energy Green Six Private Limited	1.07	0.04
Grian Energy Private Limited	1.03	0.04
ACB (India) Ltd.	1.02	0.04
Shree Cement Ltd	1.01	0.04
Netra Wind Private Limited	0.99	0.04
NTPC ANTA SOLAR PV STATION	0.98	0.04
Athena Bhiwadi Solar Power Pvt. Ltd	0.98	0.04
Srijan Energy	0.95	0.04
Nepal	0.95	0.04
ACME DHAULPUR POWERTECH PRIVATE LIMITED	0.95	0.04
INDIGRID SOLAR-II (AP) PRIVATE LIMITED	0.94	0.04
Sorang HEP	0.93	0.04
TP Saurya	0.92	0.04
TATA POWER RENEWABLE ENERGY LTD, Radhanesda	0.92	0.04
AMPLUS Pavagada	0.90	0.04
Serentica5	0.90	0.04
SJVN	0.90	0.04
Adhunik Power & Natural Resources Ltd	0.89	0.04
Gujarat State Electricity Corporation Limited phase-2	0.87	0.04
PVG_AMPLUS_PAVAGADA	0.86	0.03
Adept Renewable Technologies Private Limited	0.85	0.03
Chuzachen	0.85	0.03
ReNew Wind Energy (AP2) Private Limited	0.84	0.03
PVG_AMPLUS_TUMKUR	0.84	0.03
Athena Karnal Solar Power Pvt. Ltd	0.84	0.03
Athena Hisar Solar Power Pvt. Ltd	0.81	0.03
AMP Energy Green Five Private Limited	0.75	0.03
Kopili HEP	0.73	0.03
AD hydro power	0.70	0.03
ACME DEOGHAR SOLAR POWER PRIVATE LIMITED	0.69	0.03
Renew Power pavagada	0.68	0.03
Parbati 3	0.68	0.03
Simhadari Floating Solar	0.68	0.03
Yarrow, Pavagada	0.67	0.03
NTPC Jhanor-Gandhar Gas Power plant	0.67	0.03
ACME Chittorgarh Solar Energy Private Limited	0.66	0.03
Pare_HEP	0.65	0.03
INDIGRID SOLAR-I (AP) PRIVATE LIMITED	0.64	0.03
Sewa 2 Hydro Power	0.63	0.03
Dhariwal Infrastructure	0.60	0.02
Spring, Pugalur	0.59	0.02
GMR Kamalanga Energy Ltd.	0.59	0.02
Sainj Hydro Power	0.59	0.02
Transition Sustainable Energy Services Pvt Ltd	0.57	0.02
NTPC Kawas Gas Plant	0.56	0.02
ReNew Solar Power Private Limited	0.53	0.02
Doyang HEP	0.52	0.02
Azure Npkunta	0.52	0.02
Adani Solar Energy Four Private Limited	0.52	0.02
ACME PHALODI SOLAR ENERGY PRIVATE LIMITED	0.51	0.02

Jorethang Loop Hydro Electric Project	0.50	0.02
RANGIT	0.50	0.02
COASTAL ENERGEN PVT LTD	0.50	0.02
Sherisha Rooftop Solar SPV Four Private Limited	0.49	0.02
Gandhar Solar	0.44	0.02
Powerica	0.44	0.02
Loktak HEP	0.41	0.02
OneVolt Energy Private Limited	0.37	0.01
ACME RAISAR SOLAR ENERGY PRIVATE LIMITED	0.36	0.01
Transition Energy Services Private Limited	0.34	0.01
Lanco Budhil	0.31	0.01
Transition Green Energy Private Limited	0.30	0.01
JUNIPER GREEN COSMIC PRIVATE LIMITED	0.30	0.01
NTPC Kawas Solar	0.29	0.01
DGEN Mega Power Project	0.29	0.01
Auraiya Solar	0.24	0.01
Unchahar Solar	0.21	0.01
Kopili-2 HEP	0.17	0.01
Meenakshi Energy Limited	0.12	0.01
Singrauli Solar	0.12	0.005
Powergrid HVDC	0.12	0.005
NTPC REL Shahjapur RUMS MP	0.08	0.003
Talcher Solar	0.08	0.003
KHURJA_STPP	0.05	0.002
NFL	0.04	0.002
TEHRIPSP	0.04	0.002
GADAG_VENA_S	0.03	0.001
Dadri Solar	0.03	0.001
Power grid HVDC	0.01	0.0005
TRANSITION SUSTAINABLE ENERGY SERVICES ONE PRIVATE LIMITED	0.00	0.0001
HVDC ALPD	0.003	0.0001
Total	2477.84	100.00
Volume Exported by top 5 Regional Entities	526.08	21.23

Source: NLDC

Table-35: VOLUME OF ELECTRICITY OVER DRAWAL/ UNDER INJECTION (IMPORTED) UNDER DSM, OCTOBER 2024

Name of the Entity	Volume of Over drawal/ Under Injection (MUs)	% of Volume
Maharashtra	146.49	5.42
Uttar Pradesh	94.53	3.50
Tamil Nadu	89.39	3.31
Rajasthan	71.85	2.66
West Bengal	66.63	2.47
Bihar	64.00	2.37
Odisha	59.55	2.20
Jammu & Kashmir	53.77	1.99
Gujarat	50.78	1.88
Karnataka	44.72	1.66
Adani Wind ENergy Kutchh One Limited	38.63	1.43
Andhra Pradesh	34.75	1.29
Telangana	34.46	1.28
NTPC Sipat Thermal Power Station Stage-1	30.56	1.13
JHARKHAND Beneficiary	29.58	1.10
INOX GREEN ENERGY SERVICES LIMITED	28.13	1.04
Punjab	27.91	1.03
Spring, Pugalur	24.89	0.92
Kerala	24.32	0.90
ReNew Surya Roshni Pvt Ltd	24.29	0.90
Adani Solar Energy Jaisalmer One Private Limited WIND	24.29	0.90
TPCL Mundra Thermal Power Station (formerly CGPL)	23.70	0.88
ARCELORMITTAL NIPPON STEEL INDIA LTD. Beneficiary	23.64	0.88
Kahalgaon stage 1	22.62	0.84
TANDA STAGE #2	22.62	0.84
SINGRAULI TPS	22.11	0.82
ADANI RENEWABLE ENERGY HOLDING FOUR LIMITED	21.58	0.80
Assam	21.20	0.78
HIRIYUR_OSTROKANNADA	20.99	0.78
JSW RENEW ENERGY TWO LTD	20.58	0.76
AYANA RENEWABLE POWER SIX PRIVATE LIMITED	20.34	0.75
Sipat Stage 2	19.59	0.73
DVC Beneficiary	19.58	0.72
Uttarakhand	18.87	0.70
Kahalgaon stage 2	18.34	0.68
Vallur	17.97	0.67
Madhya Pradesh	17.84	0.66
Alfanar Energy Private Limited	17.73	0.66
OSTRO Energy Private Limited	17.53	0.65
Mytrah, Tuticorin	17.42	0.64
Ramagundam	16.98	0.63
Girel, Tuticorin	16.79	0.62
Adani Wind Energy MP One Private Limited	16.73	0.62
Chattisgarh	16.61	0.61
BARH I	15.71	0.58
Renew Power Limited SECI-II	15.65	0.58
JSW Renew Energy Limited Savalaperi infirm	15.01	0.56
Haryana	14.49	0.54
JSW Energy Utkal Ltd	14.32	0.53
Green Infra Wind Energy Limited SECI-II Vadva	14.28	0.53
NTPC Khargone Super Thermal Power Plant	14.14	0.52
Betam, Tuticorin	14.09	0.52
Adani Wind Energy Kutchh Four Ltd, Nakhatrana and Dedhiya	14.03	0.52
Sitac Kabini Renewables Pvt. Ltd.	13.73	0.51
NTPC Gadarwara Super Thermal Power Plant Stage-I	13.59	0.50
JSW RENEW ENERGY LIMITED	13.47	0.50
NTPC Farakka	13.12	0.49
IGSTPS JHAJJAR	13.07	0.48
RENEW SURYA OJAS PVT LIMITED_WIND	12.98	0.48
Netra Wind Private Limited	12.82	0.47
Adani Green Energy Ltd	12.80	0.47
NEPAL_NVVN	12.66	0.47

Orange, Tuticorin	12.60	0.47
NVVN Bhutan	12.58	0.47
Apraava Energy Private Limited (AEPL)	12.49	0.46
TelanganaSTPP	12.03	0.45
NABINAGAR STPP (NPGC)	11.98	0.44
RIHAND 2	11.97	0.44
RIHAND 1	11.81	0.44
Talcher stg 2	11.62	0.43
NTPC Solapur Thermal Power Station Stage-1	11.13	0.41
RIHAND 3	10.99	0.41
ADANI HYBRID WIND ENERGY JAILSALMER ONE LTD	10.99	0.41
ADYAH SOLAR ENERGY PRIVATE LIMITED	10.24	0.38
Chandigarh	9.93	0.37
Simhardi Stage-1	9.77	0.36
Kolayat Solar Power Plant	9.76	0.36
JSW RENEW ENERGY TWO LIMITED (KARUR)	9.74	0.36
Delhi	9.73	0.36
Adani Solar Energy Jaisalmer Four Private Limited SOLAR	9.17	0.34
BARH	8.94	0.33
SEILP1	8.84	0.33
ADANI HYBRID ENERGY JAILSALMER TWO LTD wind	8.55	0.32
ACME DEOGARH	8.54	0.32
Adani Power Limited - Raipur TPP	8.53	0.32
Srijan Energy	8.34	0.31
NTPC Mauda Super Thermal Power Station Stage 2	8.24	0.31
NTPC Mauda Super Thermal Power Station	8.07	0.30
ADANI HYBRID ENERGY JAILSALMER THREE LTD (Wind ONLY)	8.07	0.30
BALCO_CTU	7.87	0.29
Ayana, NPKUNTA	7.76	0.29
PVG_Tata Power Renewable Energy Limited	7.73	0.29
COASTAL ENERGEN PVT LTD	7.66	0.28
Goa	7.58	0.28
NTPC ETAYAPURAM SOLAR PLANT	7.51	0.28
Simhadri Stage 2	7.48	0.28
KUDGI	7.48	0.28
TP Saurya Unit-2	7.30	0.27
ReNew Wind Energy (AP2) Private Limited	7.28	0.27
KHURJA_STPP	7.21	0.27
Dadar & Nagar Haveli, Daman & Diu	7.06	0.26
Moser Baer Power (MB Power) MP Limited	7.00	0.26
Unchahar2	6.48	0.24
Semcorp Energy India Limited_Project-2(SGPL)	6.31	0.23
Torrent Solargen Ltd (Torrent Power Ltd)	6.24	0.23
Nepal	6.16	0.23
Sasan Ultra Mega Power Project	6.03	0.22
Avikiran Solar India Private Ltd.	5.93	0.22
Mahindra Renewables Pvt Ltd.	5.90	0.22
NLC Tamli Nadu Power Ltd	5.88	0.22
NTPC North Karanpura STPS	5.81	0.22
NLCII Stage 2	5.81	0.22
Talcher stage 1	5.76	0.21
NTPC Vindhyachal Super Thermal Power Station Stage 2	5.75	0.21
Koldam Hydro Power	5.68	0.21
Green Infra Wind Energy Limited SECI-III Vadva	5.61	0.21
SIKKIM Beneficiary	5.48	0.20
Jhabua	5.39	0.20
DP Power	5.38	0.20
Clean Solar Power (bhadla) Pvt. Ltd	5.36	0.20
Tripura	5.33	0.20
Ananthapuramu (Sprng) Ultra Mega Solar Park	5.33	0.20
GADAG_VENA_S	5.30	0.20
NTPC Vindhyachal Super Thermal Power Station Stage I	5.30	0.20
NLCII Stage 1	5.15	0.19
Ramagundam stage 3	5.13	0.19
Masaya Solar Energy Private Limited	5.12	0.19
Athena Jaipur Solar Power Pvt. Ltd.	5.10	0.19

Adani NPKUNTA_SOLAR	5.07	0.19
Rapp 7&8	5.00	0.19
Uri1	5.00	0.19
Korba Super Thermal Power Station Stage I&II	4.92	0.18
Jindal India Thermal Power Ltd.	4.92	0.18
Unchahar4	4.74	0.18
Fortum Solar	4.73	0.17
NPCIL Kakrapar Atomic Power Plant	4.72	0.17
ACME Chittorgarh Solar Energy Private Limited	4.59	0.17
DADRI TPS#2	4.57	0.17
Jindal Power Ltd. Stage-2	4.52	0.17
Arinsun Clean Energy Private Ltd	4.46	0.17
Bongaigaon TPP(NTPC)	4.39	0.16
RENEW SURYA RAVI	4.38	0.16
ADANI SOLAR ENERGY KA NINE PRIVATE LIMITED	4.37	0.16
Serentica Renewables India 1 Private Limited	4.35	0.16
Transition Sustainable Energy Services Pvt Ltd	4.34	0.16
Nokhra Solar	4.30	0.16
DADRI TPS#1	4.27	0.16
NEW NEYVELI THERMAL POWER PALNT	4.23	0.16
ADANI HYBRID ENERGY JAILSALMER THREE LTD (SOLAR ONLY)	4.02	0.15
NTPC Vindhyachal Super Thermal Power Station Stage 5	3.99	0.15
NTPC Vindhyachal Super Thermal Power Station Stage 3	3.95	0.15
Darlipali Super Thermal Power Station	3.89	0.14
Nidan NTPC	3.89	0.14
Bangladesh	3.80	0.14
GMR Warora Energy Ltd.	3.79	0.14
TRANSITION ENERGY	3.77	0.14
Maithon Power Ltd.	3.77	0.14
Azure Power Forty Three Private Limited	3.72	0.14
ACB (India) Ltd.	3.65	0.13
SEMBCORP GREEN INFRA PRIVATE LIMITED (INFIRM)	3.52	0.13
ADANI HYBRID ENERGY JAILSALMER ONE LTD (SOLAR ONLY)	3.47	0.13
Arunachal Pradesh	3.45	0.13
Altra Xergi Power Private Limited	3.43	0.13
JPNIGRIE (JNSTPP)	3.42	0.13
Adani Power Limited - Raigarh TPP	3.39	0.13
NSPCL	3.36	0.12
Avaada Sunce Energy Private Limited	3.34	0.12
NTPC Lara	3.31	0.12
BRBCL_NABINAGAR	3.31	0.12
PARAMPUJYA SOALR ENERGY PVT LTD	3.30	0.12
NLCTSII EXPANSION 2	3.29	0.12
Renew Surya Aayan Private Limited	3.28	0.12
Unchahar1	3.23	0.12
NTPC Vindhyachal Super Thermal Power Station Stage 4	3.18	0.12
Adani Solar Energy Jaisalmer One Private Limited	3.13	0.12
ReNew Sun Bright Private Limited	3.12	0.12
ADANI HYBRID ENERGY JAILSALMER TWO LTD (SOLAR ONLY)	3.10	0.11
BEEMPOW ENERGY PRIVATE LIMITED	3.08	0.11
AM Green Energy Private Limited Wind_Infirm	3.05	0.11
Avaada solarize	3.03	0.11
Avaada Solar, Pavagada	3.01	0.11
GRT Jewellers (India) Private Limited_GRTJIPL	3.00	0.11
NTPC, NPKunta	3.00	0.11
TATA POWER RENEWABLE ENERGY LIMITED	2.98	0.11
Adani Solar Energy Jaisalmer Two Private Limited	2.90	0.11
Renew Solar Power Private Limited Bikaner	2.89	0.11
ReNew Solar Urja Pvt Ltd	2.88	0.11
Fortum finsurya	2.86	0.11
ACME DHAULPUR POWERTECH PRIVATE LIMITED	2.75	0.10
Powerica	2.74	0.10
Ayana Renewable Power One Private Limited	2.72	0.10
RISING SUN ENENERGY PVT LIMITED	2.67	0.10
Korba Super Thermal Power Station Stage III	2.67	0.10

AYANA RENEWABLE THREE	2.66	0.10
Adhunik Power & Natural Resources Ltd	2.64	0.10
ACME PHALODI	2.63	0.10
Farakka stage 3	2.61	0.10
Goa (SR)	2.61	0.10
TRANSITION GREEN ENERGY	2.60	0.10
NTPC RAMAGUNDAM FLOATING SOLAR PLANT	2.54	0.09
RENEW SOLAR ENERGY (JHARKHAND) PRIVATE LIMITED	2.50	0.09
Azure Power Pavagada	2.47	0.09
RENEW SURYA PRATAP	2.45	0.09
ACME Heergarh Powertech Private Limited	2.43	0.09
DEVIKOT SOLAR	2.41	0.09
Avaada Sunrays Energy Private Limited	2.36	0.09
ABC RENEWABLE ENERGY PRIVATE LIMITED	2.35	0.09
Renew Sun wave Pvt. Ltd. Fatehgarh2	2.33	0.09
Adani Solar Energy Jaisalmer Five Private Limited	2.32	0.09
Thar Surya 1 Private Limited	2.30	0.09
OneVolt Energy Private Limited	2.24	0.08
Tehri Hydro	2.22	0.08
Avaada Sustainable RJProject Private Limited	2.13	0.08
Azure Power Forty One Private Limited	2.12	0.08
Mejia Thermal Power station stage 2	2.11	0.08
DGEN Mega Power Project	2.10	0.08
Eden Renewable Cite Private Limited	2.09	0.08
Uri2	2.07	0.08
TPSL Banderwala	2.07	0.08
Adani Solar Energy Jaisalmer Two Private Limited Solar	2.06	0.08
AVAADA SUNSHINE ENERGY PRIVATE LIMITED	2.02	0.07
ADANI GREEN ENERGY 25	2.00	0.07
Serentica Renewables India 4 Private Limited	2.00	0.07
Shree Cement Ltd	1.94	0.07
AMPLUS Pavagada	1.90	0.07
Meghalaya	1.87	0.07
Dhariwal Infrastructure	1.87	0.07
Adept Renewable Technologies Private Limited	1.84	0.07
Karacham Wangtoo	1.79	0.07
Azure Power Maple Private Limited	1.74	0.06
Adani Solar Energy Jaisalmer Two Private Limited, bhadla	1.74	0.06
NTPC Kawas Solar	1.73	0.06
Himachal Pradesh	1.71	0.06
Pondichery	1.71	0.06
Grian Energy Private Limited	1.69	0.06
IRCON RENEWABLE POWER LIMITED Infirm	1.68	0.06
Mega Suryaurja Pvt Ltd	1.67	0.06
Mangalore Energies Private Limited	1.60	0.06
Adani Renewable (RJ) Ltd	1.59	0.06
TATA, Npkunta	1.57	0.06
TEHRIPSP	1.56	0.06
ELECTRO SOLAIRE PVT. LTD.	1.53	0.06
Yarrow, Pavagada	1.52	0.06
Renew Power pavagada	1.48	0.05
Mahindra Renewables Private Limited	1.45	0.05
Manipur	1.45	0.05
AMP Energy Green Five Private Limited	1.41	0.05
Jindal Power Ltd.	1.39	0.05
Railways	1.37	0.05
GMR Kamalanga Energy Ltd.	1.35	0.05
KSK mahanadi	1.35	0.05
ANTA_SOLAR	1.31	0.05
SERENTICA RENEWABLES 5PL	1.29	0.05
Ratnagiri Gas and Power PVT Limited	1.29	0.05
Azure Npkunta	1.28	0.05
Assam Gas Based Power Plant(Kathalguri)	1.28	0.05
Adani Solar Energy Jaisalmer Two Private Limited (Project-2)	1.27	0.05
DHAULIGANGA HEP	1.26	0.05
Azure Solar	1.22	0.05

Athena Karnal Solar Power Pvt. Ltd	1.21	0.04
NAPP	1.20	0.04
Railways ER	1.20	0.04
TATA POWER GREEN Energy Limited	1.20	0.04
NLC Expansion 1	1.19	0.04
RAP-B	1.19	0.04
Athena Hisar Solar Power Pvt. Ltd	1.18	0.04
AMP Energy Green Six Private Limited	1.17	0.04
Sherisha Rooftop Solar SPV Four Private Limited	1.13	0.04
TATA POWER RENEWABLE ENERGY LTD, Radhanesda	1.12	0.04
PVG_AMPLUS_TUMKUR	1.11	0.04
PVG_AMPLUS_PAVAGADA	1.11	0.04
Avaada RJHN Private Limited	1.10	0.04
MAHAN ENERGEN LIMITED	1.09	0.04
Azure Power Thirty Four pvt Limited	1.04	0.04
Athena Bhiwadi Solar Power Pvt. Ltd	1.04	0.04
INDIGRID SOLAR-I (AP) PRIVATE LIMITED	1.02	0.04
Renew Surya Vihaan Private Limited	1.01	0.04
SJVN	0.97	0.04
INDIGRID SOLAR-II (AP) PRIVATE LIMITED	0.93	0.03
SKS Power	0.91	0.03
GUJARAT INDUSTRIES POWER COMPANY LTD	0.89	0.03
SIMHAPURI(SEPL)	0.87	0.03
KREDL, Pavagada	0.85	0.03
Chamera 3	0.84	0.03
Sewa 2 Hydro Power	0.83	0.03
JUNIPER GREEN COSMIC	0.83	0.03
Singoli Bhatwari HEP	0.82	0.03
DULHASTI Hydro power	0.82	0.03
Gujarat State Electricity Corporation Limited phase-2	0.80	0.03
Kopili HEP	0.79	0.03
TP Saurya	0.78	0.03
Jindal Steel & power Ltd. (Dangamahua CPP)	0.76	0.03
ReNew Solar Power Private Limited	0.71	0.03
Ranganadi HEP	0.70	0.03
RAP-C	0.66	0.02
Unchahar3	0.65	0.02
Agartala Gas Turbine Power Plant	0.59	0.02
NTPC Jhanor-Gandhar Gas Power plant	0.59	0.02
Koteshwar hps	0.58	0.02
Dehar Hydro	0.58	0.02
SALAL Hydro	0.56	0.02
Simhadari Floating Solar	0.54	0.02
NTPC REL Shahjapur RUMS MP	0.53	0.02
TRN Energy	0.53	0.02
BALCO	0.51	0.02
Nagaland	0.50	0.02
NAPHTA JHAKRI HEP	0.48	0.02
Singrauli Solar	0.46	0.02
RKM Power	0.44	0.02
LKPLST2G	0.44	0.02
Chamera 1	0.42	0.02
BHAKRA	0.42	0.02
PALATANA	0.38	0.01
Auraiya Solar	0.38	0.01
LANCO AMARKANTAK	0.37	0.01
Adani Solar Energy Four Private Limited	0.37	0.01
RANGIT	0.36	0.01
Gandhar Solar	0.35	0.01
Gujarat State Electricity Corporation Limited, Radhanesda	0.34	0.01
NTPC Kawas Gas Plant	0.33	0.01
Sorang HEP	0.32	0.01
Kishanganga HEP	0.32	0.01
Powergrid HVDC	0.32	0.01
Rongnichu Hydro Electric Project	0.31	0.01
ILFS	0.31	0.01

TRANSITION SUSTAINABLE ONE	0.30	0.01
Mizoram	0.28	0.01
Sainj Hydro Power	0.28	0.01
NFL	0.25	0.01
Chuzachen	0.25	0.01
AD hydro power	0.25	0.01
TANAKPUR	0.23	0.01
Pare_HEP	0.21	0.01
ACME RAISAR	0.20	0.01
VEDANTA LTD	0.19	0.01
Doyang HEP	0.18	0.01
Tashiding Hydro Power	0.18	0.01
Bairasuil Hydro Power	0.18	0.01
Pong Hydro Power	0.17	0.01
Parbati 3	0.16	0.01
VENA ENERGY VIDYUTH PRIVATE LIMITED HYBRID	0.15	0.01
Talcher Solar	0.15	0.01
Unchahar Solar	0.15	0.01
KOPPAL_RenewOjas_W_Infirm	0.14	0.01
Loktak HEP	0.11	0.004
Lanco Budhil	0.10	0.004
Rampur Hydro	0.08	0.003
Dadri Solar	0.07	0.003
Chamera 2	0.06	0.002
Jorethang Loop Hydro Electric Project	0.03	0.001
Kameng HEP	0.02	0.001
Power_grid HVDC	0.02	0.001
SINGRAULI HYDRO	0.002	0.0001
TOTAL	2701.05	100.00
Volume Imported by top 5 Regional Entities	468.90	17.36

Source: NLDC

Table-36: VOLUME AND PRICE OF RENEWABLE ENERGY CERTIFICATES (RECs) TRANSACTED THROUGH POWER EXCHANGES AND THROUGH TRADERS (BILATERAL), OCTOBER 2024

Sr. No	Details of REC Transactions	Through Power Exchange			Bilateral through Traders
		IEX	PXIL	HPX	
1	Volume of Buy Bid	1539521	1228604	70445	-
2	Volume of Sell Bid	2671910	2628166	2010644	-
3	Ratio of Buy Bid to Sell Bid Volume	0.58	0.47	0.04	-
4	Traded Volume (MWh)	444161	360199	10644	21976
5	Weighted Average Price (₹/MWh)	114	116	120	133

Source: Power Exchanges & Grid-India REC Report

Note: 1 REC = 1 MWh

Under the CERC REC Regulations 2022, the categorization of RECs has been dispensed with and exchange of RECs through trading licensees has also been allowed

Table-37(a): VOLUME AND PRICE OF CROSS BORDER TRADE THROUGH DAY AHEAD MARKET AT IEX, OCTOBER 2024

Sr. No.	Neighbouring Country	Volume (MU)			Weighted Average Price (₹/kWh)	
		Sale	Purchase	Net*	Sale	Purchase
1	Nepal	0.00	0.00	0.00	-	-
2	Bhutan	50.38	0.00	-50.38	4.35	-
	Total	50.38	0.00	-50.38	-	-

Source: IEX

* Net indicates difference of volume purchased and sold by the respective neighbouring country

Note: No Cross Border transactions were recorded in DAM at PXIL and HPX

Table-37(b): VOLUME AND PRICE OF CROSS BORDER TRADE THROUGH REAL TIME MARKET AT IEX, OCTOBER 2024

Sr. No.	Neighbouring Country	Volume (MU)			Weighted Average Price (₹/kWh)	
		Sale	Purchase	Net*	Sale	Purchase
1	Nepal	117.35	0.00	-117.35	3.58	-
2	Bhutan	0.42	0.00	-0.42	4.59	-
	Total	117.78	0.00	-117.78	-	-

Source: IEX

* Net indicates difference of volume purchased and sold by the respective neighbouring country

Note: No Cross Border transactions were recorded in RTM at PXIL and HPX



Economics Division
Central Electricity Regulatory Commission
6th, 7th & 8th Floors, Tower B, World Trade Centre,
Nauroji Nagar, New Delhi- 110029